

SAN DIEGO, CALIFORNIA

20310

RNAV (GPS) RWY 24L

AL-903 [USN]

MIRAMAR MCAS (JOE FOSS FLD) (KNKX)

WAAS CH 54028 W24A	APCH CRS 243°	Rwy Idg TDZE Arprt Elev	8001 477 477
--------------------------	------------------	-------------------------------	--------------------

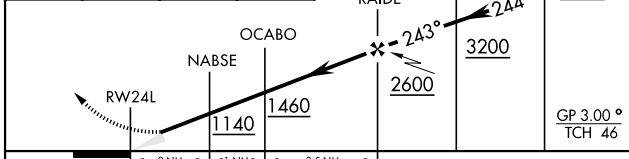
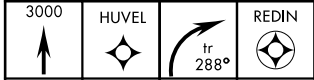
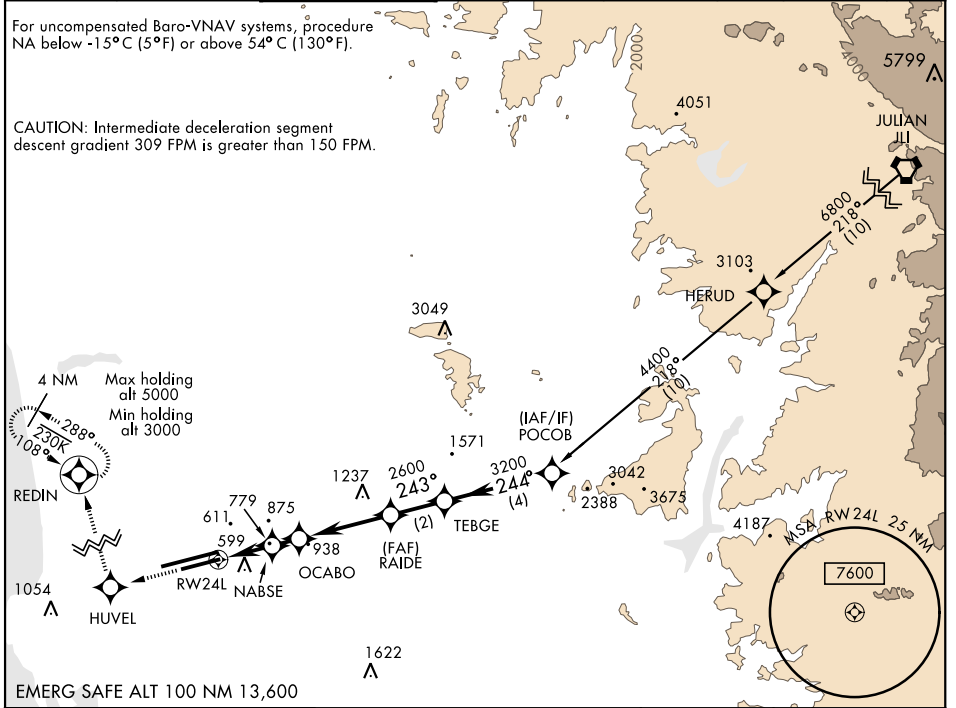
DME/DME RNP-0.3 NA.

MISSED APPROACH: Climb to 3000 direct HUVEL, 288° track to REDIN and hold.

ATIS ★ 133.475 352.0	SOCAL APP CON 132.2 269.1	FOSS TOWER ★ 135.2 298.925	GND CON 128.625 307.325	CLNC DEL 125.975 254.325	LA CENTER 291.7	ASR/ PAR
----------------------------	---------------------------------	----------------------------------	-------------------------------	--------------------------------	--------------------	-------------

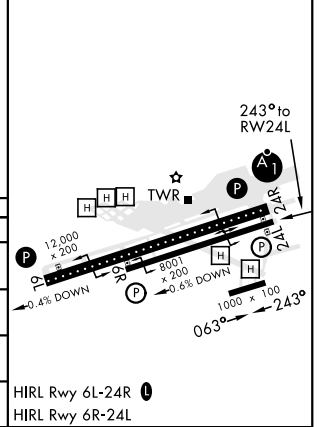
For uncompensated Baro-VNAV systems, procedure NA below -15°C (5°F) or above 54°C (130°F).

CAUTION: Intermediate deceleration segment descent gradient 309 FPM is greater than 150 FPM.



CATEGORY	A	B	C	D
LPV DA	677-¾		200	(200-¾)
LNAV/VNAV DA	733-⅞ 256 (300-⅞)	744-⅞ 267 (300-⅞)	752-⅞ 275 (300-⅞)	763-⅞ 286 (300-⅞)
LNAV MDA	1040-1 563 (600-1)		1040-1 563 (600-1)	
CIRCLING	1040-1 563 (600-1)		1040-1 563 (600-1)	1180-2 703 (800-2)

ELEV 477	TDZE 477
----------	----------



SAN DIEGO, CALIFORNIA
Amdt 3 13SEP18

32° 52' N - 117° 09' W

MIRAMAR MCAS (JOE FOSS FLD) (KNKX)

RNAV (GPS) RWY 24L

SW-3, 25 FEB 2021 to 25 MAR 2021

SW-3, 25 FEB 2021 to 25 MAR 2021