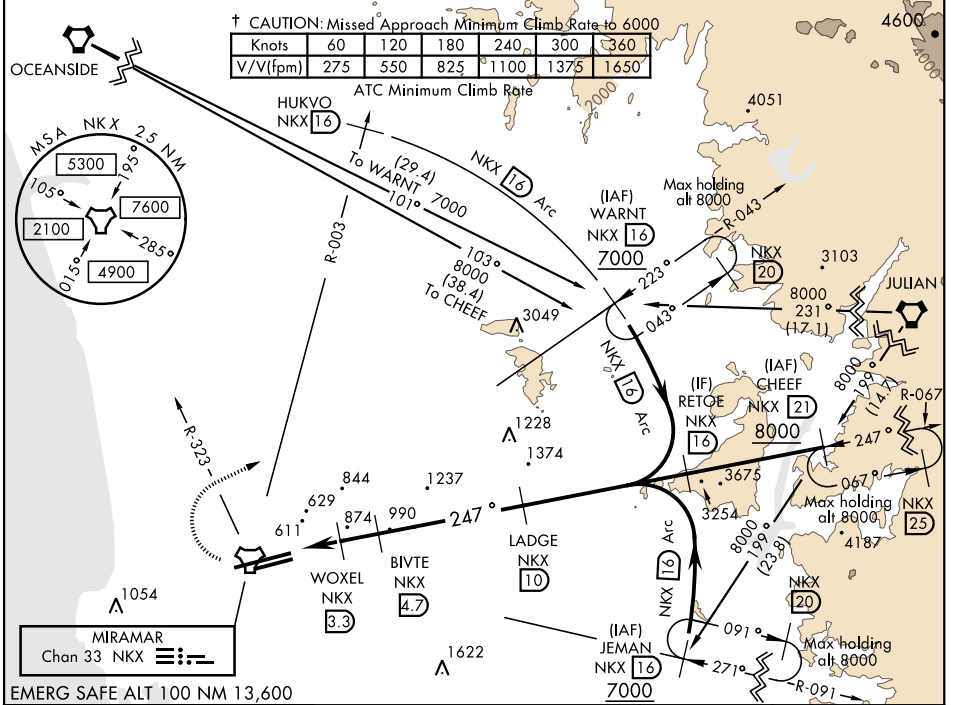


# TACAN RWY 24R

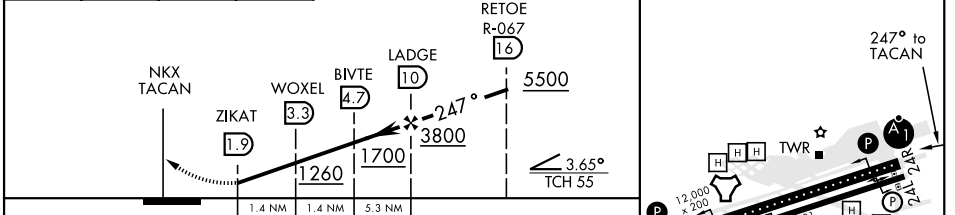
TACAN NKX Chan 33	APCH CRS 247°	Rwy Ldg TDZE 24R 12,000 24L 475 Arprt Elev 477	24L 8001 24L 477	AL-903 [USN]	MIRAMAR MCAS (JOE FOSS FLD) (KNKX)
----------------------	------------------	--	---------------------	--------------	------------------------------------

⚠ \* When ALSF inop, increase CAT AB vis to 1 mile, CAT CD to 1 1/8 miles. ALSF-1  
⚠ MISSED APPROACH: Climb to 1500, then climbing right turn to 7000 via NKX TACAN R-003 to HUKVO. Arc NE of NKX via the 16 mile arc to WARTNT and hold. Cross NKX R-323 at 3000 mandatory, cross HUKVO at 6000 mandatory.

ATIS ★ 133.475 352.0	SOCAL APP CON 132.2 269.1	FOSS TOWER ★ 135.2 298.925	GND CON 128.625 307.325	CLNC DEL 125.975 254.325	LA CENTER 291.7	ASR/ PAR
----------------------------	---------------------------------	----------------------------------	-------------------------------	--------------------------------	--------------------	-------------



1500	7000	HUKVO NKX 16	VGSI and descent angles not coincident.	ELEV 477	TDZE 24R 475
↑	NKX R-003	Arc NE 16			TDZE 24L 477



CATEGORY	A	B	C	D
S-24R *	1140-1/2	665 (700-1/2)	1140-1 1/2	665 (700-1 1/2)
SIDE-STEP 24L	1140-1	663 (700-1)	1140-1 7/8	663 (700-1 7/8)
CIRCLING	1140-1	663 (700-1)	1140-1 7/8	1180-2 1/4

HIRL Rwy 6L-24R  
 HIRL Rwy 6R-24L

# TACAN RWY 24R

SW-3, 25 FEB 2021 to 25 MAR 2021

SW-3, 25 FEB 2021 to 25 MAR 2021