

VITKO-THREE DEPARTURE (VITKO3 • VITKO)

SAN DIEGO, CALIFORNIA

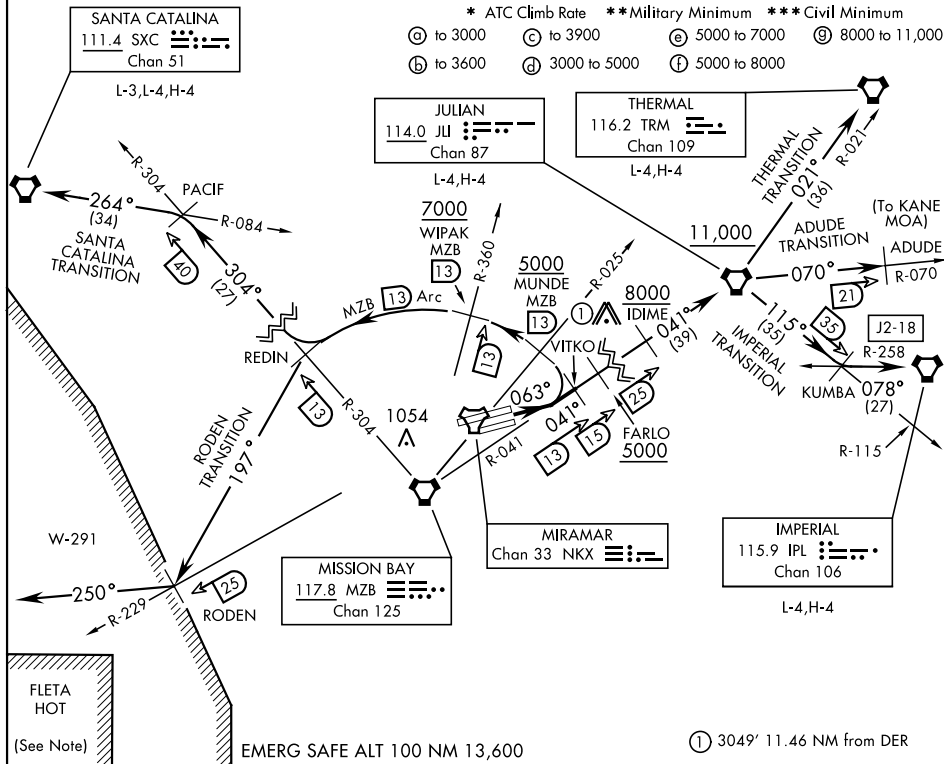
ATIS ★ 133.475 352.0
 CLNC DEL
 125.975 254.325
 GND CON
 128.625 307.325
 FOSS TOWER ★
 135.2 298.925
 SOCAL DEP CON
 132.2 269.1 E

SHL-903 [USN]

| Rwy | Knots | 60 | 120 | 180 | 240 | 300 | 360 |
|------------|----------|-----|------|------|------|------|------|
| * 6L/R Ⓐ | V/V(fpm) | 520 | 1040 | 1560 | 2080 | 2600 | 3120 |
| ** 6L/R Ⓑ | V/V(fpm) | 280 | 560 | 840 | 1120 | 1400 | 1680 |
| *** 6L/R Ⓒ | V/V(fpm) | 300 | 600 | 900 | 1200 | 1500 | 1800 |
| * 6L/R Ⓓ | V/V(fpm) | 680 | 1360 | 2040 | 2720 | 3400 | 4080 |
| * 6L/R Ⓔ | V/V(fpm) | 353 | 706 | 1059 | 1412 | 1765 | 2118 |
| * 6L/R Ⓕ | V/V(fpm) | 300 | 600 | 900 | 1200 | 1500 | 1800 |
| * 6L/R Ⓖ | V/V(fpm) | 220 | 440 | 660 | 880 | 1100 | 1320 |

* ATC Climb Rate ** Military Minimum *** Civil Minimum

- Ⓒ to 3000 Ⓓ to 3900 Ⓔ 5000 to 7000 Ⓕ 8000 to 11,000
- Ⓖ to 3600 Ⓗ 3000 to 5000 Ⓘ 5000 to 8000



SW-3, 25 FEB 2021 to 25 MAR 2021

SW-3, 25 FEB 2021 to 25 MAR 2021

DEPARTURE ROUTE DESCRIPTION

TAKE-OFF RWY 6L/R: Climb via heading 063° to intercept and proceed via MZB VORTAC R-041 to VITKO. Join MZB R-041 at or above 3000. Thence...

ADUDE TRANSITION (VITKO3 • ADUDE): Via MZB R-041 to JLI VORTAC. Then JLI R-070 to ADUDE. Cross FARLO at or above 5000. Cross IDIME at or above 8000. Cross JLI VORTAC at or above 11,000. (To operate in KANE MOA.)

IMPERIAL TRANSITION (VITKO3 • IPL): Via MZB R-041 to JLI VORTAC. Then via JLI R-115 to KUMBA INT, then via IPL VORTAC R-258 to IPL. Cross FARLO at or above 5000. Cross IDIME at or above 8000. Cross JLI VORTAC at or above 11,000.

(Continued on next page)

VITKO-THREE DEPARTURE (VITKO3 • VITKO)

SAN DIEGO, CALIFORNIA