

# HI-TACAN RWY 14R

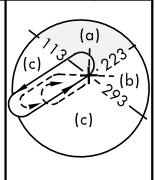
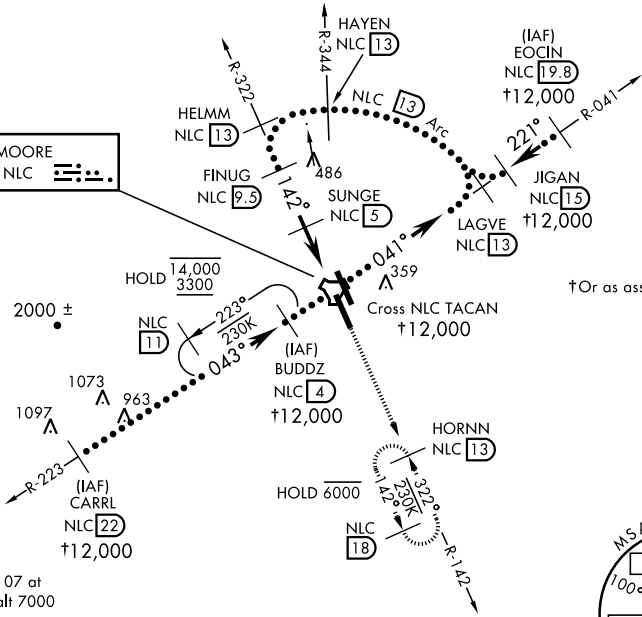
TACAN NLC Chan <b>80</b>	APCH CRS <b>142°</b>	Rwy ldg <b>13,501</b> TDZE <b>228</b> Arprt Elev <b>228</b>	AL-5067 [USN]	LEMOORE NAS (REEVES FIELD) (KNLC)
-----------------------------	-------------------------	---	---------------	-----------------------------------

MISSED APPROACH: Climb to 3000 via R-142 to HORNN and hold.

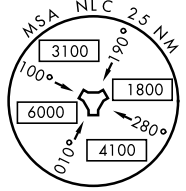
ATIS★ <b>121.575 327.15</b>	LEMOORE APP CON <b>124.1N 118.15 S 269.025</b>	LEMOORE TOWER ★ <b>128.3 340.2</b>	GND CON <b>121.65 305.2</b>	CLNC DEL <b>124.1 371.9</b>	ASR/ PAR
--------------------------------	---	---------------------------------------	--------------------------------	--------------------------------	-------------

Simultaneous approaches authorized.

LEMOORE  
Chan 80 NLC



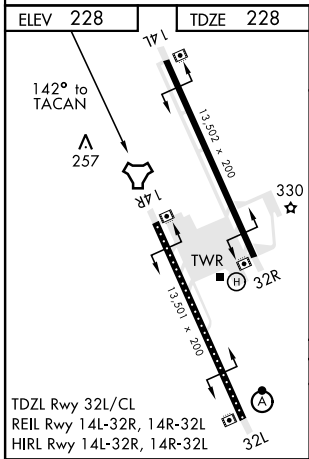
†Or as assigned



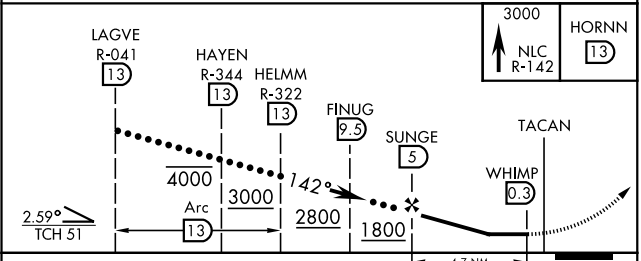
Arriving V107 at CARRL min alt 7000

SW-2, 25 FEB 2021 to 25 MAR 2021

SW-2, 25 FEB 2021 to 25 MAR 2021



EMERG SAFE ALT 100 NM 16,500



CATEGORY	C	D	E
S-14R	560/55	331	(400-1)
<b>C</b> CIRCLING	680-1½ 451 (500-1½)	780-2	551 (600-2)

# HI-TACAN RWY 14R