

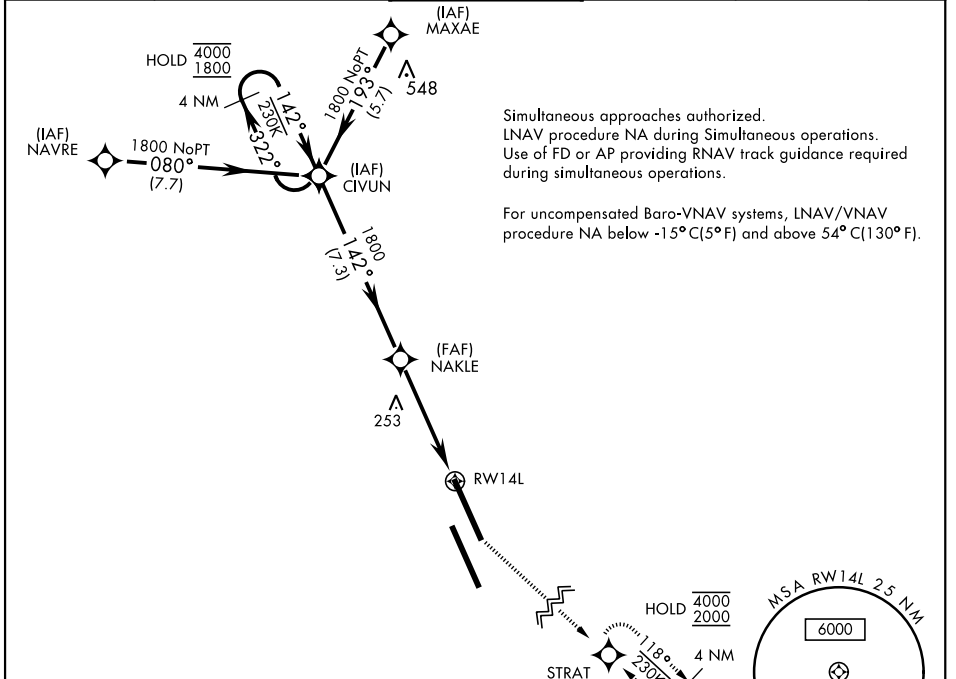
RNAV (GPS) RWY 14L

WAAS Chan 70209 W14A	APCH CRS 142°	Rwy Idg 13,502 TDZE 219 Arprt Elev 228
--	-------------------------	---

AL-5067 [USN]

LEMOORE NAS (REEVES FIELD) (KNLC)

DME/DME RNP-0.3 NA		MISSED APPROACH: Climb to 1200, then climb left turn to 2000 direct STRAT and hold.			
ATIS ★ 121.575 327.15	LEMOORE APP CON 124.1N 118.15S 269.025	LEMOORE TOWER ★ 128.3 340.2	GND CON 121.65 305.2	CLNC DEL 124.1 371.9	ASR/PAR



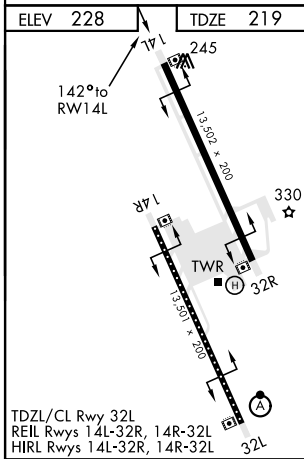
Simultaneous approaches authorized.
LNAV procedure NA during Simultaneous operations.
Use of FD or AP providing RNAV track guidance required during simultaneous operations.

For uncompensated Baro-VNAV systems, LNAV/VNAV procedure NA below -15°C(5°F) and above 54°C(130°F).

SW-2, 25 FEB 2021 to 25 MAR 2021

SW-2, 25 FEB 2021 to 25 MAR 2021

EMERG SAFE ALT 100 NM 16,500



TDZL/CL Rwy 32L
REIL Rwy 14L-32R, 14R-32L
HIRL Rwy 14L-32R, 14R-32L

ELEV 228	TDZE 219				
		1200	2000	STRAT	
		TLNAV Only			
		RWY 14L			
GP 3.00° TCH 54					
CATEGORY	A	B	C	D	
LPV DA		420/40	200	(200-¾)	
LNAV/VNAV DA		470/40	250	(300-¾)	
LNAV MDA	520/55	300	(300-1)	520/45	300 (300-7/8)
C CIRCLING	680-1	451	(500-1)	680-1½	780-2 451 (500-1½)

RNAV (GPS) RWY 14L