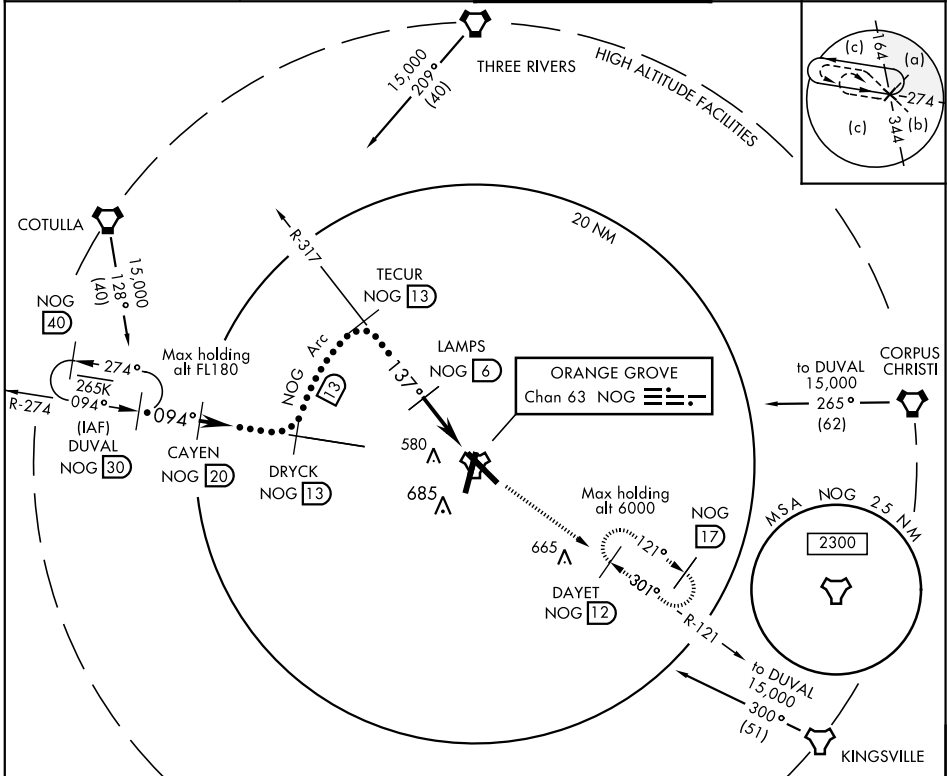


# HI-TACAN RWY 13

TACAN Chan <b>63</b>	NOG	APCH CRS <b>137°</b>	Rwy Ldg THRE Arprt Elev <b>8001</b> <b>257</b> <b>257</b>	JAL-6553 [USN]	ORANGE GROVE NALF (KNOG)
-------------------------	-----	-------------------------	--	----------------	--------------------------

MISSED APPROACH: Climb to 3000 via NOG TACAN R-317 to NOG and NOG R-121 to DAYET and hold.

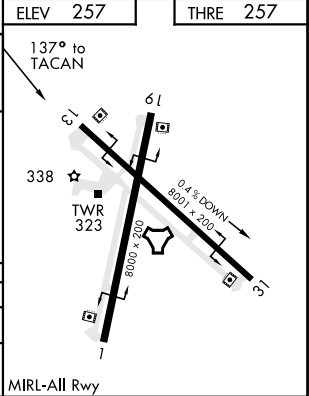
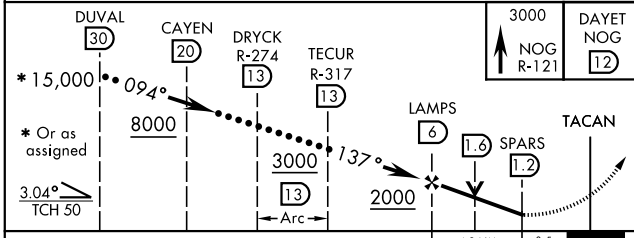
ATIS ★ <b>254.35</b>	KINGSVILLE APP CON <b>119.90 290.45</b>	ORANGE GROVE TOWER ★ <b>281.425 318.85</b>	GND CON <b>229.4</b>
-------------------------	--	---	-------------------------



SC-3, 25 FEB 2021 to 25 MAR 2021

SC-3, 25 FEB 2021 to 25 MAR 2021

EMERG SAFE ALT 100 NM 16,200	ELEV 257	THRE 257
------------------------------	----------	----------



CATEGORY	C	D	E
S-13	580-1	323 (400-1)	
CIRCLING	920-1¼ 663 (700-1¾)	1000-2½ 743 (800-2½)	1000-2¾ 743 (800-2¾)

ORANGE GROVE, TEXAS 27°54'N-98°03'W ORANGE GROVE NALF (KNOG)

Orig 15OCT15

# HI-TACAN RWY 13