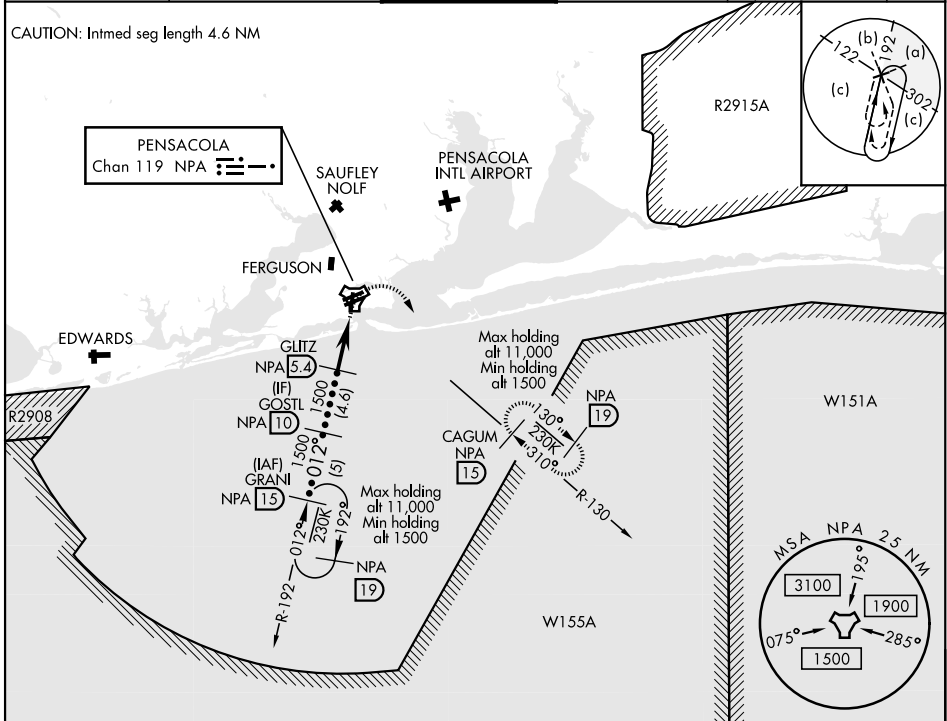


HI-TACAN RWY 1

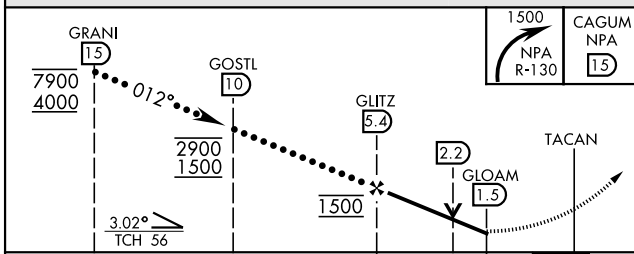
TACAN NPA Chan 119	APCH CRS 012°	Rwy Idg 7136 TDZE 28 Arprt Elev 28	JAL-736 [USN] PENSACOLA NAS (FORREST SHERMAN FLD) (KNPA)
-----------------------	------------------	---	--

MISSED APPROACH: Climbing right turn to 1500 via NPA TACAN R-130 to CAGUM and hold.

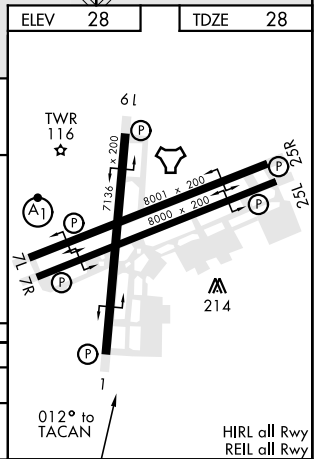
ATIS 124.35 266.8	PENSACOLA APP CON 120.65 270.8	SHERMAN TOWER 120.7 340.2	GND CON 121.7 336.4	CLNC DEL 134.1 268.7	ASR/ PAR
----------------------	-----------------------------------	------------------------------	------------------------	-------------------------	-------------



RADAR REQUIRED
EMERG SAFE ALT 100 NM 3100



CATEGORY	C	D	E
S-1	460-1¼	432 (500-1¼)	
C CIRCLING	540-1½ 512 (600-1½)	580-2 552	(600-2)



HI-TACAN RWY 1

SE-3, 25 FEB 2021 to 25 MAR 2021

SE-3, 25 FEB 2021 to 25 MAR 2021