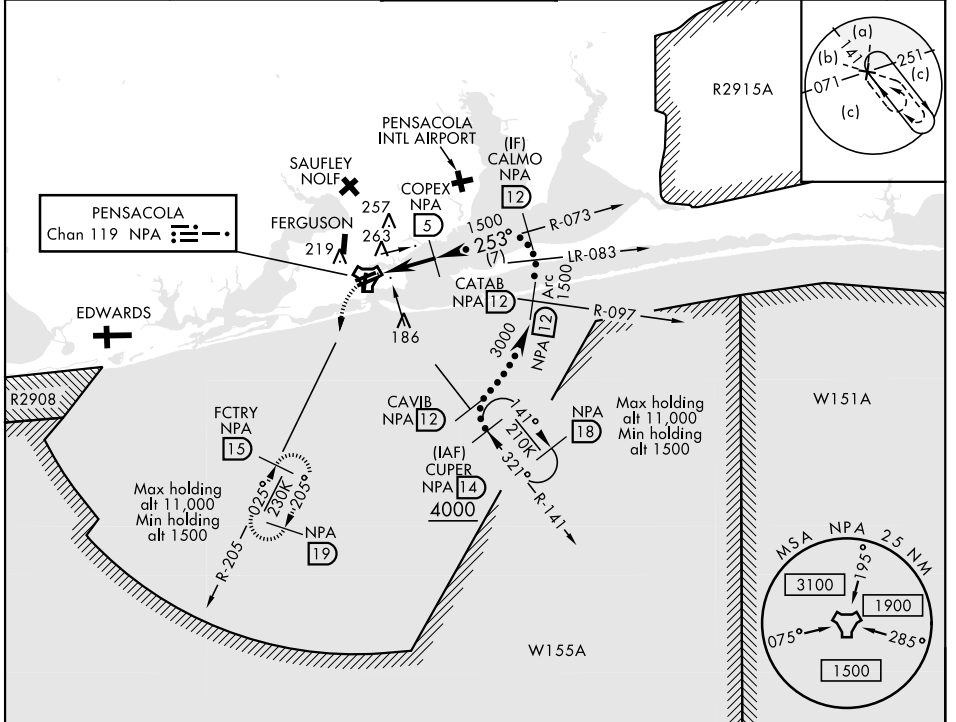


HI-TACAN RWY 25R

TACAN NPA Chan 119	APCH CRS 253°	Rwy Idg TDZE Arprt Elev 8001 21 28	JAL-736 [USN] PENSACOLA NAS (FORREST SHERMAN FLD) (KNPA)
------------------------------	-------------------------	--	--

MISSED APPROACH: Climbing left turn to 1500 via NPA TACAN R-205 to FCTRY and hold.

ATIS 124.35 266.8	PENSACOLA APP CON 120.65 270.8	SHERMAN TOWER 120.7 340.2	GND CON 121.7 336.4	CLNC DEL 134.1 268.7	ASR/ PAR
-----------------------------	--	-------------------------------------	-------------------------------	--------------------------------	-------------

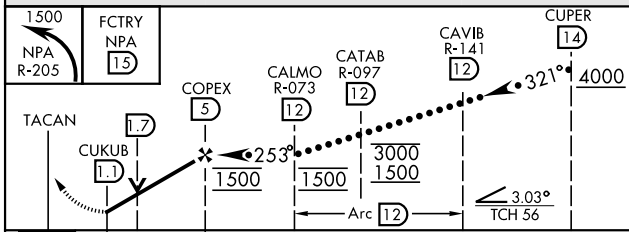


SE-3, 25 FEB 2021 to 25 MAR 2021

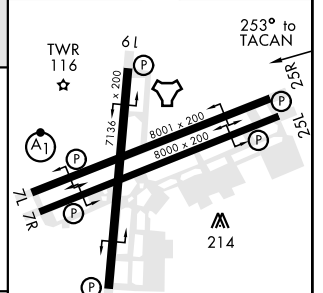
SE-3, 25 FEB 2021 to 25 MAR 2021

RADAR REQUIRED

EMERG SAFE ALT 100 NM 3100



ELEV	28	TDZE	21
------	----	------	----



CATEGORY	C	D	E
S-25R	440-1½	419 (500-1½)	
CIRCLING	540-1½ 512 (600-1½)	580-2	552 (600-2)

HIRL all Rwys
REL all Rwys

HI-TACAN RWY 25R