

HI-TACAN RWY 7L

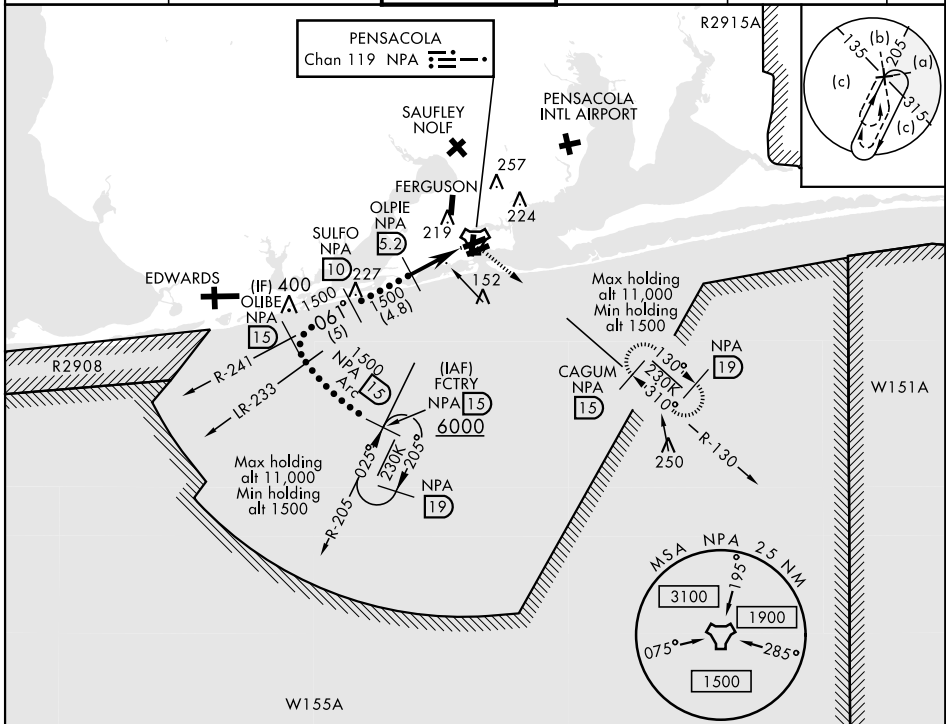
TACAN NPA Chan 119	APCH CRS 061°	Rwy Idg TDZE Arprt Elev 8001 23 28	JAL-736 [USN] PENSACOLA NAS (FORREST SHERMAN FLD) (KNPA)
------------------------------	-------------------------	------------------------------------------------------------------------	----------------------------------------------------------

ALS-1

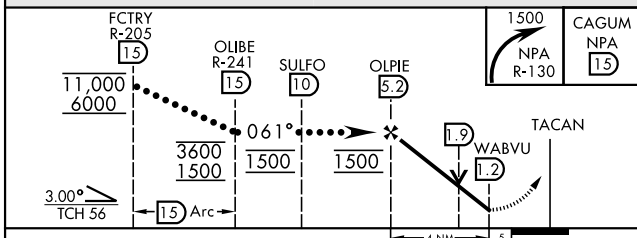
 MISSED APPROACH: Climbing right turn to 1500 via NPA TACAN R-130 to CAGUM and hold.

* When ALS inop, increase vis to 1 1/2 miles.

ATIS 124.35 266.8	PENSACOLA APP CON 120.65 270.8	SHERMAN TOWER 120.7 340.2	GND CON 121.7 336.4	CLNC DEL 134.1 268.7	ASR/PAR
-----------------------------	------------------------------------------	-------------------------------------	-------------------------------	--------------------------------	---------



RADAR REQUIRED
EMERG SAFE ALT 100 NM 3100



CATEGORY	C	D	E
S-7L *	440-3/4	417 (500-3/4)	
CIRCLING	540-1 1/2 512 (600-1 1/2)	580-2	552 (600-2)

ELEV	28	TDZE	23
------	----	------	----

TACAN station diagram showing TWR 116, NPA arcs (R-130, R-151, R-152), and obstacle altitudes (61, 214).

HIRL all Rwy's
REIL all Rwy's

HI-TACAN RWY 7L

SE-3, 25 FEB 2021 to 25 MAR 2021

SE-3, 25 FEB 2021 to 25 MAR 2021