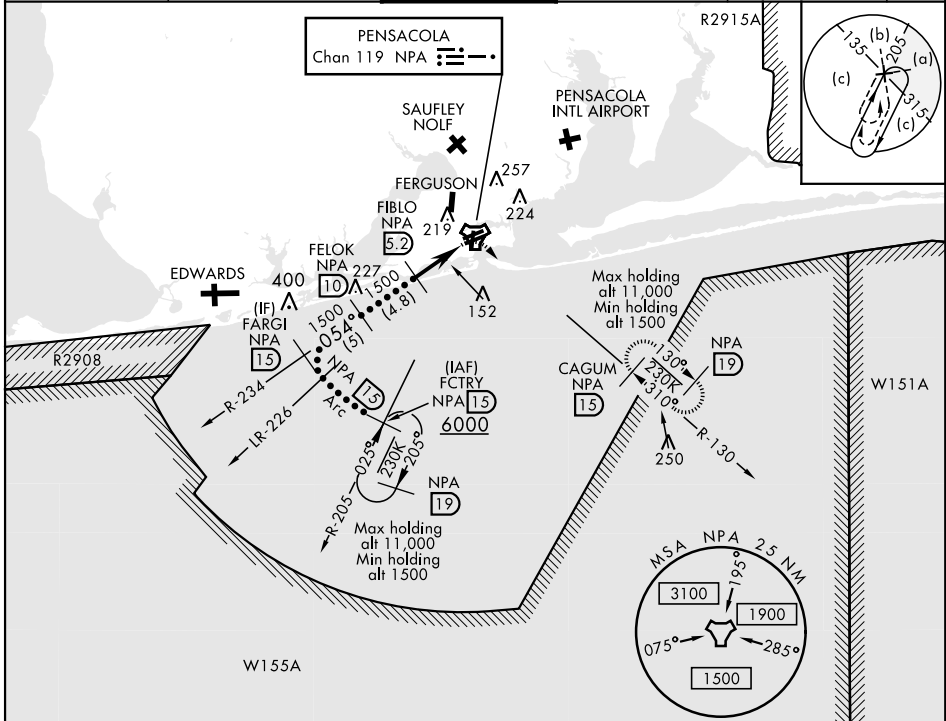


HI-TACAN RWY 7R

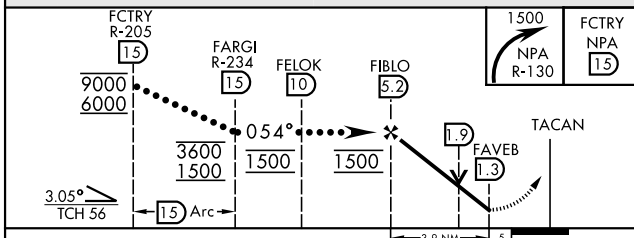
TACAN NPA Chan 119	APCH CRS 054°	Rwy Idg TDZE Arpt Elev 8000 25 28	JAL-736 [USN] PENSACOLA NAS (FORREST SHERMAN FLD) (KNPA)
------------------------------	-------------------------	---	--

MISSED APPROACH: Climbing right turn to 1500 via NPA TACAN R-130 to CAGUM and hold.

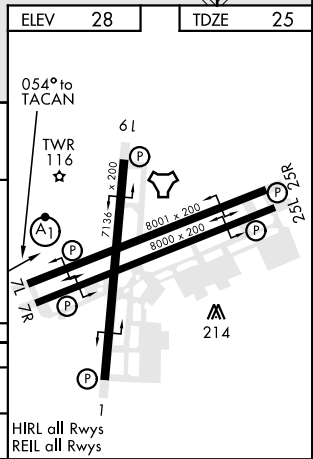
ATIS 124.35 266.8	PENSACOLA APP CON 120.65 270.8	SHERMAN TOWER 120.7 340.2	GND CON 121.7 336.4	CLNC DEL 134.1 268.7	ASR/ PAR
-----------------------------	--	-------------------------------------	-------------------------------	--------------------------------	-------------



RADAR REQUIRED EMERG SAFE ALT 100 NM 3100



CATEGORY	C	D	E
S-7R	440-1½	415 (500-1½)	
CIRCLING	540-1½ 512 (600-1½)	580-2	552 (600-2)



HI-TACAN RWY 7R

SE-3, 25 FEB 2021 to 25 MAR 2021

SE-3, 25 FEB 2021 to 25 MAR 2021