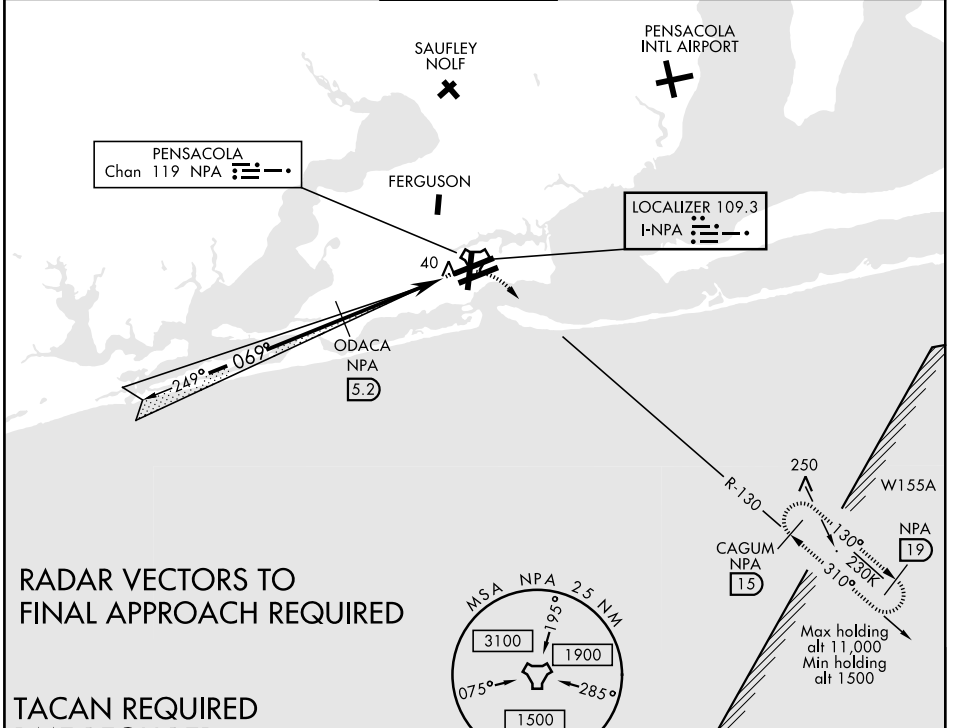


ILS Z or LOC/DME RWY 7L

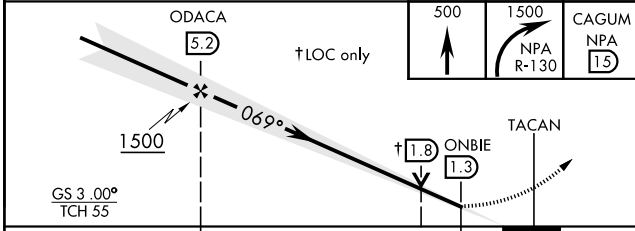
LOC I-NPA 109.3	APCH CRS 069°	Rwy Idg 8001 TDZE 23 Arpt Elev 28	AL-736 [USN]	PENSACOLA NAS (FORREST SHERMAN FLD) (KNPA)		
▼ * When ALS inop, increase vis to ¾ mile. ** When ALS inop, increase vis to 1 mile			ALSF-1 	MISSED APPROACH: Climb to 500. Then climbing right turn to 1500 via NPA R-130 to CAGUM and hold.		
ATIS 124.35 266.8	PENSACOLA APP CON 120.65 270.8	SHERMAN TOWER 120.7 340.2	GND CON 121.7 336.4	CLNC DEL 134.1 268.7	ASR/ PAR	



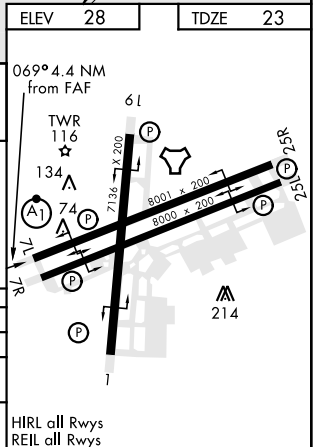
RADAR VECTORS TO FINAL APPROACH REQUIRED

**TACAN REQUIRED
DME REQUIRED**

EMERG SAFE ALT 100 NM 3100



CATEGORY	A	B	C	D	E
S-ILS 7L*	223-½		200	(200-½)	
S-LOC/ DME 7L**	400-½	377 (400-½)	400-5/8	377	(400-5/8)
CIRCLING	520-1	492 (500-1)	540-1½ 512(600-1½)	580-2	552 (600-2)



ILS Z or LOC/DME RWY 7L

SE-3, 25 FEB 2021 to 25 MAR 2021

SE-3, 25 FEB 2021 to 25 MAR 2021