

TACAN RWY 1

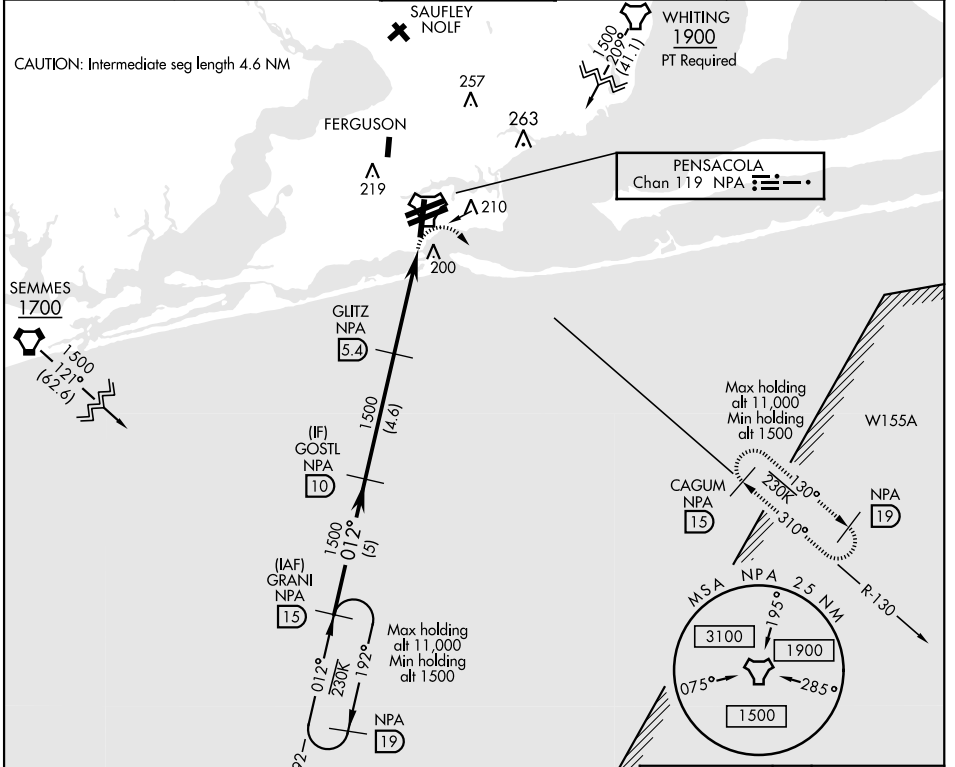
TACAN NPA Chan 119	APCH CRS 012°	Rwy Idg 7136	TDZE 28	Arprt Elev 28
-----------------------	------------------	-----------------	------------	------------------

AL-736 [USN]

PENSACOLA NAS (FORREST SHERMAN FLD) (KNPA)

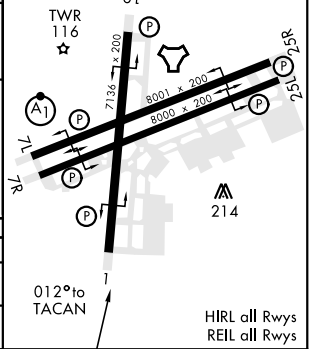
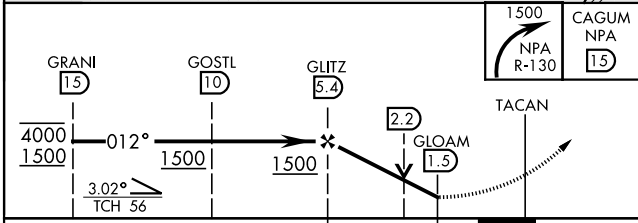
MISSED APPROACH: Climbing right turn to 1500 via NPA TACAN R-130 to CAGUM and hold.

ATIS 124.35 266.8	PENSACOLA APP CON 120.65 270.8	SHERMAN TOWER 120.7 340.2	GND CON 121.7 336.4	CLNC DEL 134.1 268.7	ASR/ PAR
----------------------	-----------------------------------	------------------------------	------------------------	-------------------------	-------------



RADAR REQUIRED
EMERG SAFE ALT 100 NM 3100

ELEV 28	TDZE 28
---------	---------



CATEGORY	A	B	C	D	E
S-1	460-1 432 (500-1)		460-1 1/4 432 (500-1 1/4)		
CIRCLING	520-1 492 (500-1)		540-1 1/2 512 (600-1 1/2)	580-2 552 (600-2)	

TACAN RWY 1

SE-3, 25 FEB 2021 to 25 MAR 2021

SE-3, 25 FEB 2021 to 25 MAR 2021