

# TACAN RWY 7R

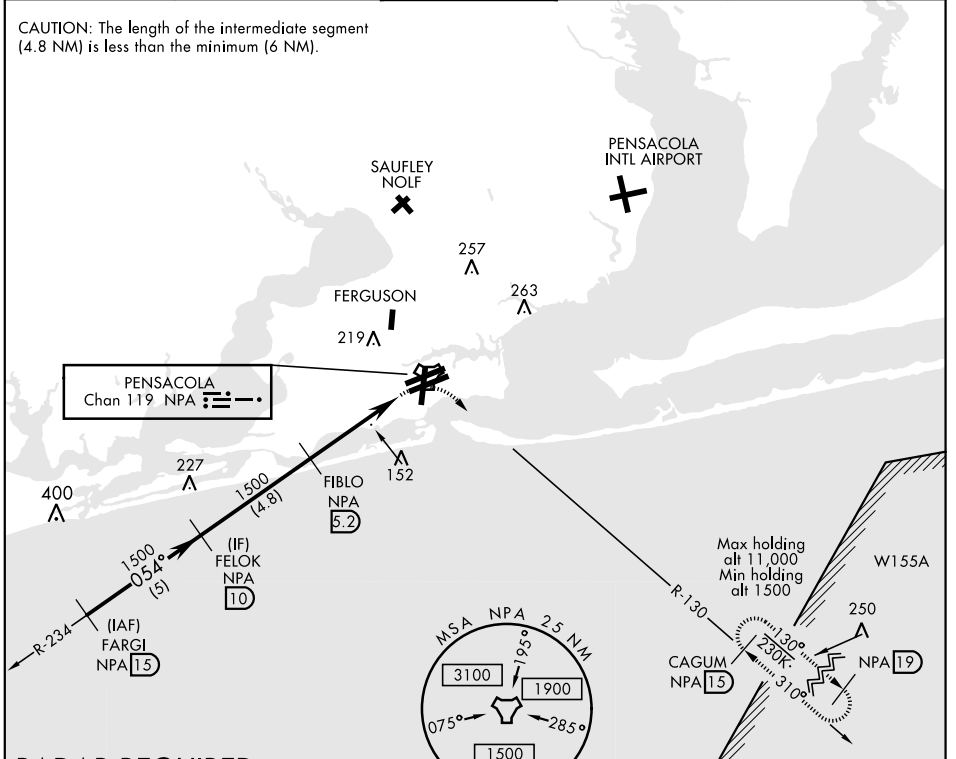
TACAN NPA Chan <b>119</b>	APCH CRS <b>054°</b>	Rwy ldg TDZE Arprt Elev	<b>8000</b> <b>25</b> <b>28</b>
------------------------------	-------------------------	-------------------------------	---------------------------------------

AL-736 [USN]

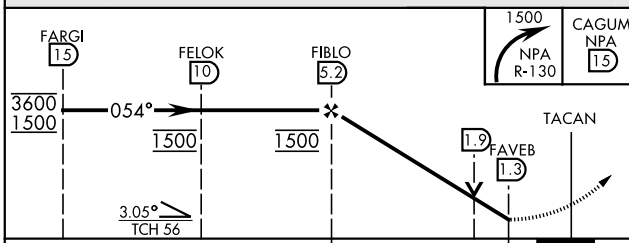
PENSACOLA NAS (FORREST SHERMAN FLD) (KNPA)

<p><b>▽</b> MISSED APPROACH: Climbing right turn to 1500 via NPA TACAN R-130 to CAGUM and hold.</p>				
ATIS <b>124.35 266.8</b>	PENSACOLA APP CON <b>120.65 270.8</b>	SHERMAN TOWER <b>120.7 340.2</b>	GND CON <b>121.7 336.4</b>	CLNC DEL <b>134.1 268.7</b>
ASR/PAR				

CAUTION: The length of the intermediate segment (4.8 NM) is less than the minimum (6 NM).

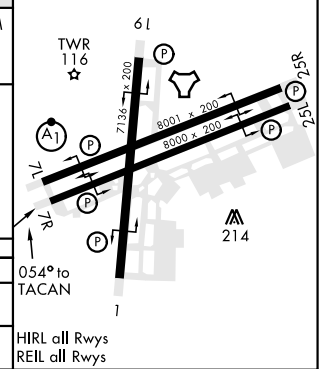


**RADAR REQUIRED**  
EMERG SAFE ALT 100 NM 3100



ELEV 28	TDZE 25
---------	---------

CATEGORY	A	B	C	D	E
S-7R	440-1	415 (500-1)	440-1½	415 (500-1½)	
<b>CIRCLING</b>	520-1	492 (500-1)	540-1½ 512 (600-1½)	580-2	552 (600-2)



HIRL all Rwy's  
REL all Rwy's

# TACAN RWY 7R

SE-3, 25 FEB 2021 to 25 MAR 2021

SE-3, 25 FEB 2021 to 25 MAR 2021