

LOC/DME I-NQA 109.75 Chan 34 (Y)	APP CRS 219°	Rwy Idg TDZE Apt Elev	8000 319 319
-----------------------------------------------	------------------------	-----------------------------	-----------------------------------------

ILS or LOC RWY 22

MILLINGTON-MEMPHIS (NQA)

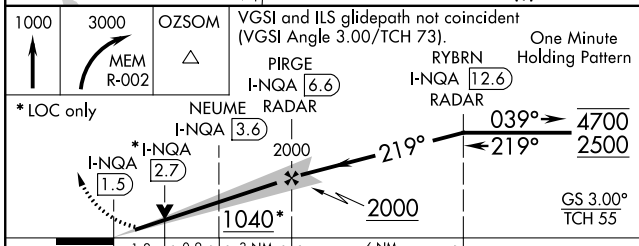
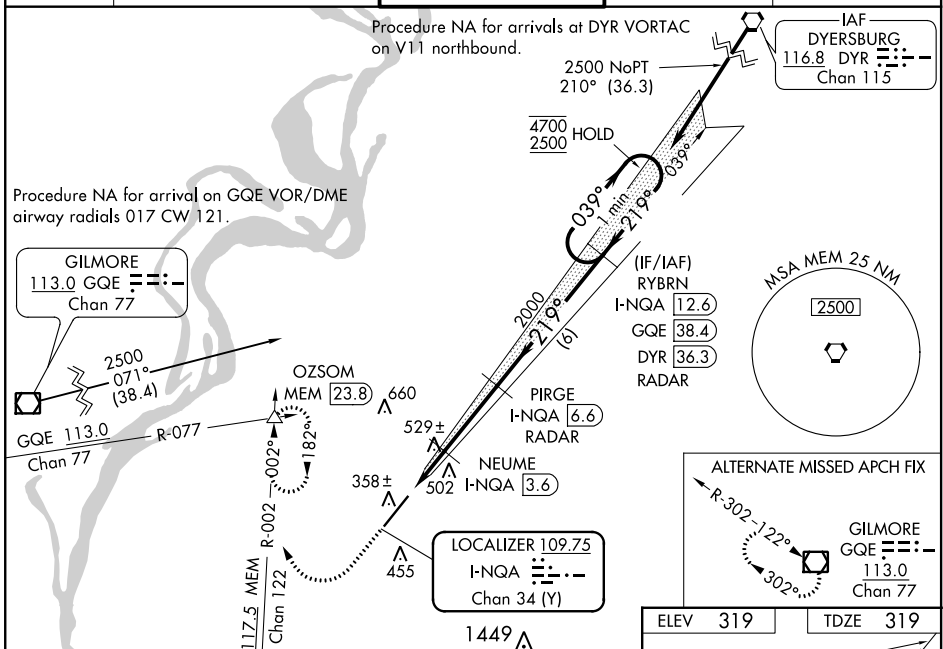
DME or RADAR required for procedure entry. DME or RADAR required for LOC only.

⚠ S-ILS 22 procedure NA when control tower closed if ceiling/visibility lower than 800/2. Inop table does not apply to ILS. For inop ALS, increase LOC Cat A/B visibility to 1 SM, and Cat C/D/E visibility to 2 SM. Increase NEUME fix minimums Cat A/B visibility to 1 SM and Cat C/D/E to 1½ SM.

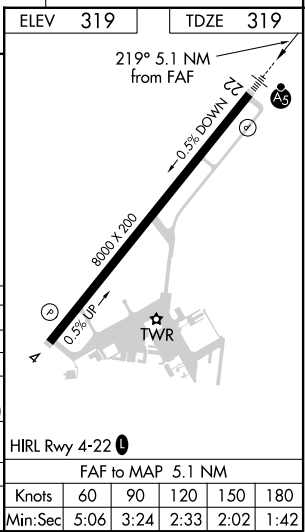


MALSR
MISSED APPROACH: Climb to 1000 then climbing right turn to 3000 on MEM VORTAC R-002 to OZSOM INT/MEM 23.8 DME and hold, continue climb-in-hold to 3000.

AWOS-3 118.925	MEMPHIS APP CON 119.1 291.6 125.8 338.3 (176°-355°) (356°-175°)	MILLINGTON TOWER ★ 120.25 (CTAF) 0 340.2	GND CON 121.375	UNICOM 122.95
--------------------------	-------------------------------------------------------------------------------------------	----------------------------------------------------	---------------------------	-------------------------



CATEGORY	A	B	C	D	E
S-ILS 22	519-½ 200 (200-½)				
S-LOC 22	1040-¾	721 (800-¾)	1040-1⅝	721 (800-1⅝)	
C CIRCLING	1040-1	721 (800-1)	1040-2	1040-2¼	1040-2½
			721 (800-2)	721 (800-2¼)	721 (800-2½)
NEUME FIX MINIMUMS					
S-LOC 22	780-¾	461 (500-¾)	780-1	461 (500-1)	
C CIRCLING	800-1	820-1	920-1¾	960-2	960-2¼
	481 (500-1)	501 (600-1)	601 (700-1¾)	641 (700-2)	641 (700-2¼)



SE-1, 25 FEB 2021 to 25 MAR 2021

SE-1, 25 FEB 2021 to 25 MAR 2021