

HI-ILS or LOC/DME RWY 13R

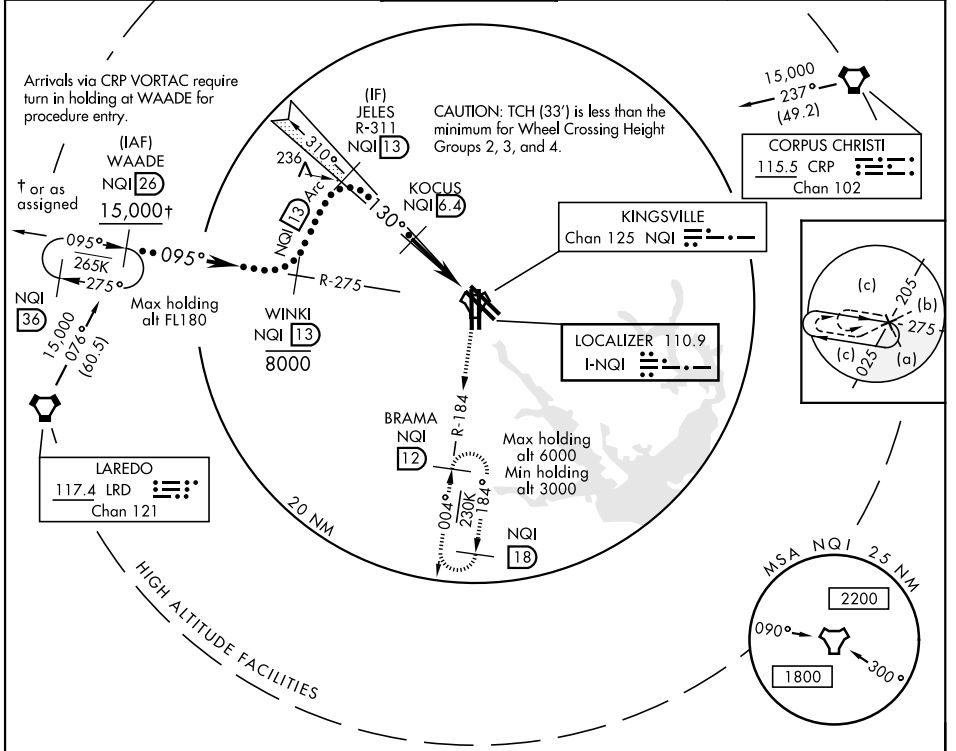
LOC I-NQI 110.9	APCH CRS 130°	Rwy Idg TDZE Arpt Elev 8000 50 50
---------------------------	-------------------------	---

JAL-918 [USN]

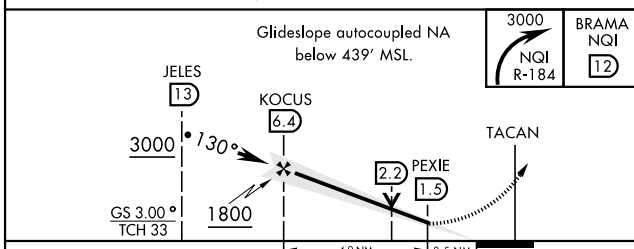
KINGSVILLE NAS (KNQI)

MISSED APPROACH: Climbing right turn to 3000 to intercept NQI TACAN R-184 to BRAMA and hold.

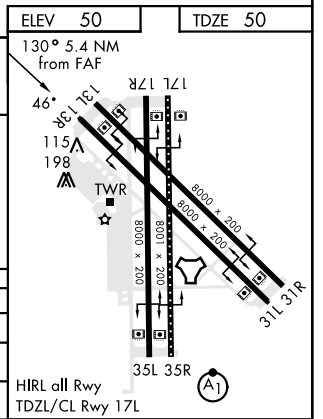
ATIS ★ 276.2	KINGSVILLE APP CON 119.9 290.45	KINGSVILLE TOWER ★ 124.1 377.05	GND CON 239.05	CLNC DEL 328.4	ASR/PAR
------------------------	---	---	--------------------------	--------------------------	---------



EMERG SAFE ALT 100 NM 16,200



CATEGORY	C	D	E
S-ILS 13R	250-3/4	200	(200-3/4)
S-LOC/DME 13R	480-1/4	430	(500-1/4)
CIRCLING	760-2 710 (800-2)	760-2 1/4 710 (800-2 1/4)	800-2 3/4 750 (800-2 3/4)



HI-ILS or LOC/DME RWY 13R

SC-3, 25 FEB 2021 to 25 MAR 2021

SC-3, 25 FEB 2021 to 25 MAR 2021