

KINGSVILLE-THREE DEPARTURE (NQI3•NQI)

SHL-918 [USN]

KINGSVILLE NAS (KNQI)

KINGSVILLE, TEXAS

ATIS★ 276.2
 CLNC DEL
 328.4
 GND CON
 239.05
 KINGSVILLE TOWER ★
 124.1 377.05
 KINGSVILLE DEP CON
 121.05 266.8

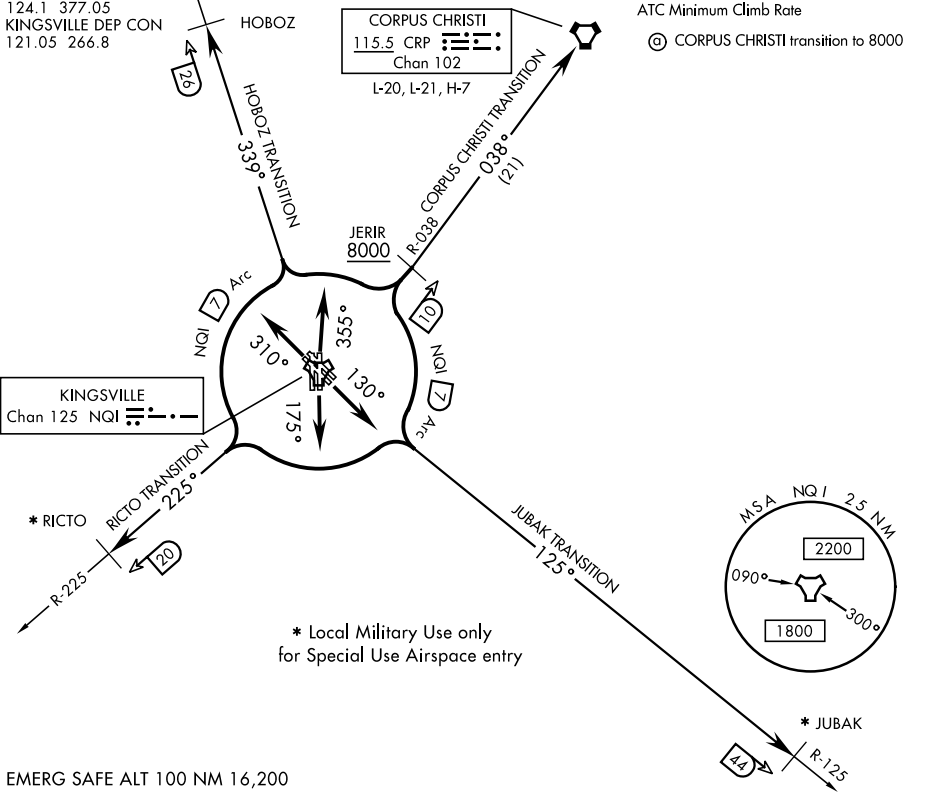
Rwy	Knots	60	120	180	240	300	360
13L/RⓄ	V/V(fpm)	386	772	1158	1544	1930	2316
17L/RⓄ	V/V(fpm)	300	600	900	1200	1500	1800
31L/RⓄ	V/V(fpm)	409	818	1227	1636	2045	2454
35L/RⓄ	V/V(fpm)	551	1102	1653	2204	2755	3306

ATC Minimum Climb Rate

Ⓞ CORPUS CHRISTI transition to 8000

CORPUS CHRISTI
 115.5 CRP

 Chan 102
 L-20, L-21, H-7



EMERG SAFE ALT 100 NM 16,200

DEPARTURE ROUTE DESCRIPTION

TAKE-OFF RWY 13L/R: Climb via heading 130° to join NQI TACAN 7 DME arc, thence....

TAKE-OFF RWY 17L/R: Climb via heading 175° to join NQI TACAN 7 DME arc, thence....

TAKE-OFF RWY 31L/R: Climb via heading 310° to join NQI TACAN 7 DME arc, thence....

TAKE-OFF RWY 35L/R: Climb via heading 355° to join NQI TACAN 7 DME arc, thence....

CORPUS CHRISTI TRANSITION (NQI3•CRP):

Rwys 13L/R and 17L/R: Turn left to intercept NQI 7 DME arc and arc NE. Turn right to intercept NQI R-038 to cross JERIR at or above 8000. Then on NQI R-038 to CRP VORTAC.

Rwys 31L/R and 35L/R: Turn right to intercept NQI 7 DME arc and arc NE. Turn left to intercept NQI R-038 to cross JERIR at or above 8000. Then on NQI R-038 to CRP VORTAC.

(Continued on next page)

KINGSVILLE-THREE DEPARTURE (NQI3•NQI)

Orig 05NOV20

KINGSVILLE, TEXAS

KINGSVILLE NAS (KNQI)

SC-3, 25 FEB 2021 to 25 MAR 2021

SC-3, 25 FEB 2021 to 25 MAR 2021