

# TACAN Z RWY 17R

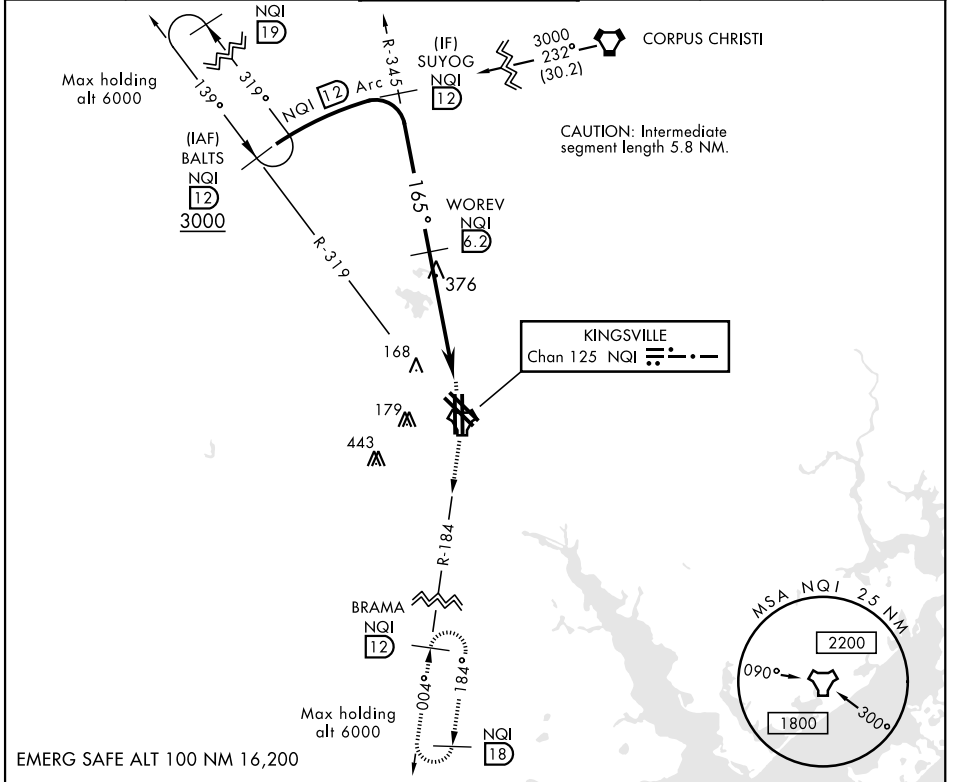
TACAN NQI Chan <b>125</b>	APCH CRS <b>165°</b>	Rwy ldg TDZE Arprt Elev	<b>8000</b> <b>49</b> <b>50</b>
------------------------------	-------------------------	----------------------------	---------------------------------------

AL-918 [USN]

KINGSVILLE NAS (KNQI)

**MISSED APPROACH:** Climb to 3000 direct NQI TACAN and climbing right turn to intercept NQI R-184 to BRAMA and hold.

ATIS ★ <b>276.2</b>	KINGSVILLE APP CON <b>119.9 290.45</b>	KINGSVILLE TOWER ★ <b>124.1 377.05</b>	GND CON <b>239.05</b>	CLNC DEL <b>328.4</b>	ASR/PAR
------------------------	---	---	--------------------------	--------------------------	---------



SUYOG R-345 NQI 12		3000 NQI	BRAMA NQI 12	ELEV 50	TDZE 49
WOREV NQI 6.2		1800	1800	165° to TACAN	
OTOBE NQI 3.3		860	1.9 JOXAP NQI 1.4	TACAN	
TACAN		3.05° TCH 50	2.9 NM	1.9 NM	
CATEGORY	A	B	C	D	
S-17R	400-1	351	(400-1)		
CIRCLING	540-1	490 (500-1)	760-2 710 (800-2)	760-2¼ 710 (800-2¼)	HIRL all Rwy TDZL/CL Rwy 17L

# TACAN Z RWY 17R

SC-3, 25 FEB 2021 to 25 MAR 2021

SC-3, 25 FEB 2021 to 25 MAR 2021