

KEY WEST, FLORIDA

COPTER TACAN W RWY 4

TACAN Chan 78	NQX	APCH CRS 044°	Rwy Idg TDZE Arprt Elev	7002 4 6
-------------------------	-----	-------------------------	-------------------------------	-------------------------------------

AL-214 [USN] KEY WEST NAS (BOCA CHICA FLD) (KNQX)

⚠ CAUTION: When Rwy 14, 22 VGSi inop, circling to Rwy 14, 22 NA at night. † MISSED APPROACH: Climb to 1600 via NQX TACAN R-224 to NQX, then via NQX R-094 to CANIN and hold

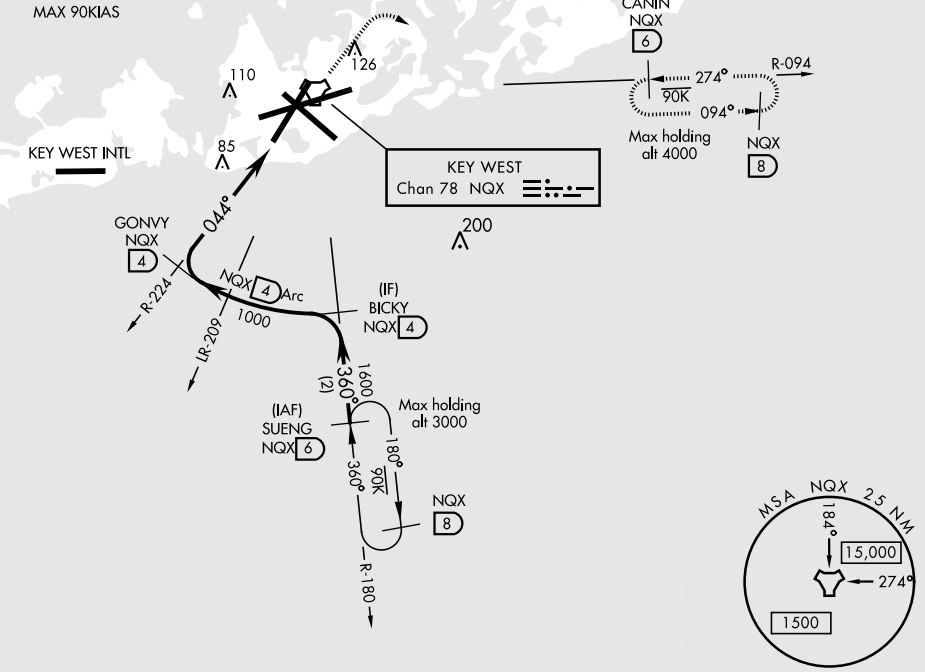
ATIS ★ 307.025	NAVY KEY WEST APP CON 124.025 313.7	NAVY KEY WEST TOWER ★ 118.575 361.25	GND CON 121.7 336.45	CLNC DEL 121.2 357.4	ASR/PAR
--------------------------	---	--	--------------------------------	--------------------------------	---------

† CAUTION: Missed Approach
Minimum Climb Rate to 500

Knots	60	120	180	240	300	360
V/V(fpm)	225	450	675	900	1125	1350

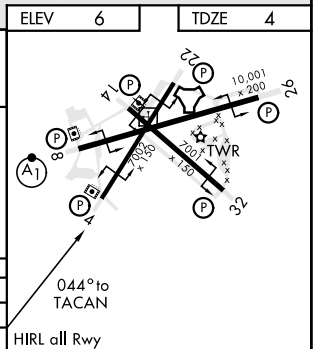
Controlling Obstacle 110

CAUTION: Balloon with strobe light on unmarked cable to 14,000 in R-2916.



EMERG SAFE ALT 100 NM 15,000

SUENG	BICKY R-180	GONVY R-224	1600	NQX	CANIN
1600	1600	1000	1600		
3.16° TCH 35		044°			
			2.8 NM		
CATEGORY					
COPTER					
S-4	360-1	356	(400-1)		
CIRCLING	460-1	454	(500-1)		



SE-3, 25 FEB 2021 to 25 MAR 2021

SE-3, 25 FEB 2021 to 25 MAR 2021

KEY WEST, FLORIDA
Amdt 1 21MAY20

24° 34'N - 81° 41'W

KEY WEST NAS (BOCA CHICA FLD) (KNQX)

COPTER TACAN W RWY 4