

HI-TACAN W RWY 8

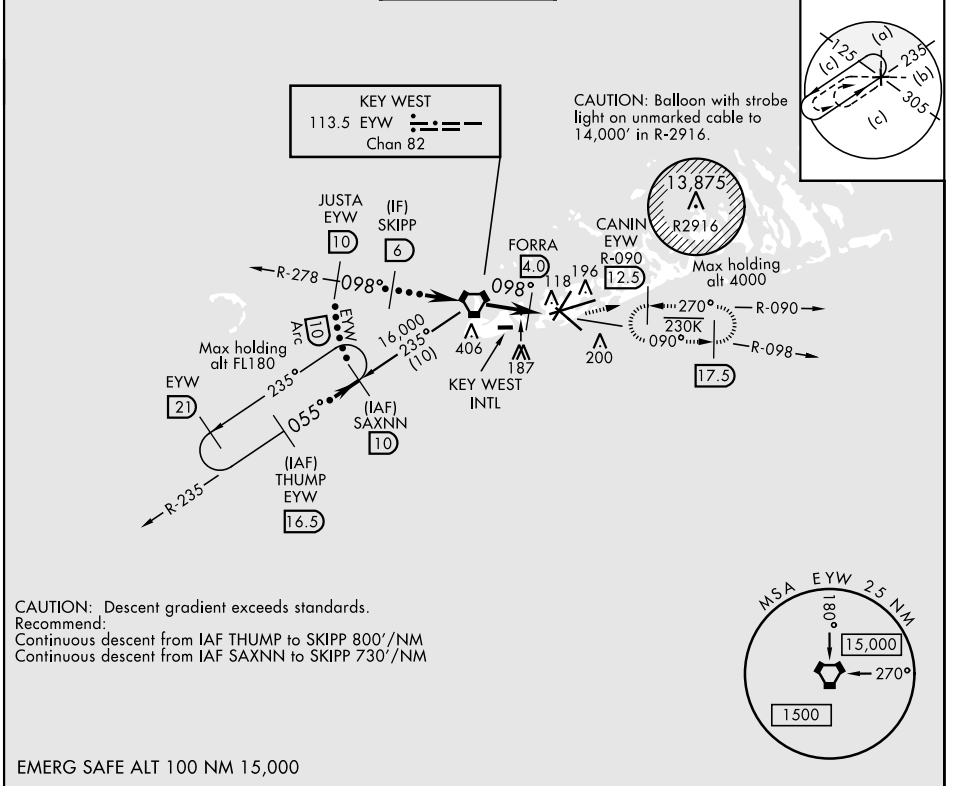
VORTAC EYW 113.5 Chan 82	APCH CRS 098°	Rwy Idg 10,001 TDZE 4 Arprt Elev 6
--	-------------------------	---

JAL-214 [UN] ALSF-1

KEY WEST NAS (BOCA CHICA FLD) (KNQX)

MISSED APPROACH: Climbing left turn to 1600 intercept EYW VORTAC R-090 to CANIN and hold.

ATIS ★ 307.025	NAVY KEY WEST APP CON 124.025 313.7	NAVY KEY WEST TOWER ★ 118.575 340.25	GND CON 121.7 336.45	CLNC DEL 121.2 357.4	ASR/PAR
--------------------------	---	--	--------------------------------	--------------------------------	---------



CAUTION: Descent gradient exceeds standards.
Recommend:
Continuous descent from IAF THUMP to SKIPP 800'/NM
Continuous descent from IAF SAXNN to SKIPP 730'/NM

EMERG SAFE ALT 100 NM 15,000

THUMP 16.5	SAXNN R-235 10	JUSTA R-278 10	SKIPP 6	VORTAC	FORRA 4.0	ECIPA 5.3	CANIN EYW R-090 12.5	ELEV 6	TDZE 4
<p>† Or as directed by ATC †† FORRA to MAP</p> <p>3.11° TCH 44</p> <p>16,000 055°</p> <p>10,000</p> <p>5600</p> <p>Arc 10</p> <p>1600 098°</p> <p>1600</p> <p>560</p> <p>4.0 NM</p> <p>1.5 NM</p>								<p>MSA EYW 2.5 NM</p> <p>180° 15,000</p> <p>270° 1500</p>	
CATEGORY	C		D		E				
S-8	440-1¼		436	(500-1¼)					
CIRCLING	500-1½ 494 (500-1½)		560-2	554	(600-2)			HIRL all Rwy	

HI-TACAN W RWY 8

SE-3, 25 FEB 2021 to 25 MAR 2021

SE-3, 25 FEB 2021 to 25 MAR 2021