

KEY WEST, FLORIDA

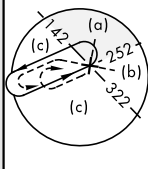
HI-TACAN Z RWY 4

TACAN NQX Chan 78	APCH CRS 044°	Rwy ldg TDZE 7002 4 Arpt Elev 6	JAL-214 [USN]	KEY WEST NAS (BOCA CHICA FLD) (KNQX)
----------------------	------------------	---	---------------	--------------------------------------

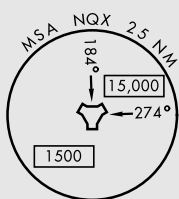
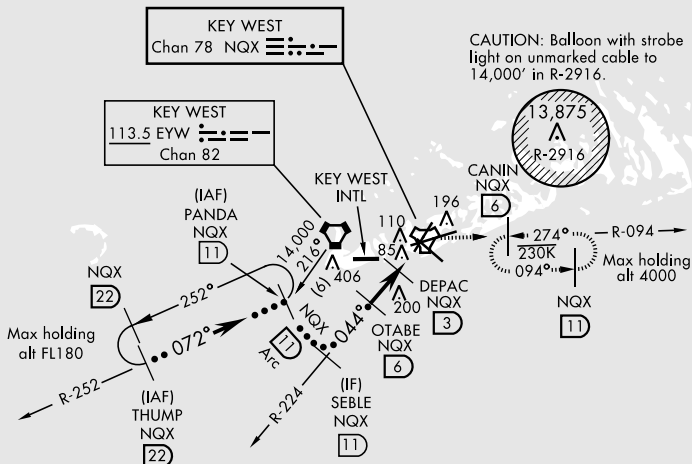
MISSED APPROACH: Climb to 1600 via NQX TACAN R-224 to NQX then via NQX R-094 to CANIN and hold.

ATIS ★ 307.025	NAVY KEY WEST APP CON 124.025 313.7	NAVY KEY WEST TOWER ★ 118.575 340.25	GND CON 121.7 336.45	CLNC DEL 121.2 357.4	ASR/PAR
-------------------	--	---	-------------------------	-------------------------	---------

EYW VORTAC feeder to PANDA requires turn in hold.
Short intermediate, (5 NM) recommend early configuration.

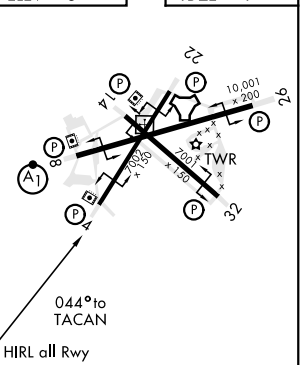
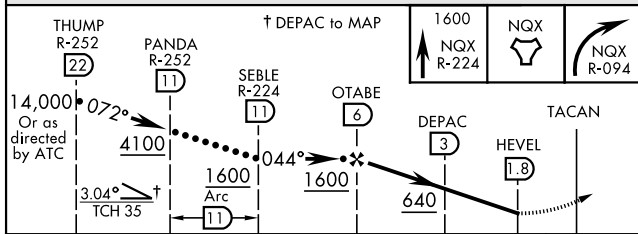


CAUTION: Balloon with strobe light on unmarked cable to 14,000' in R-2916.



EMERG SAFE ALT 100 NM 15,000

ELEV 6	TDZE 4
--------	--------



CATEGORY	C	D	E
S-4	340-1	336 (400-1)	
CIRCLING	500-1½ 494 (500-1½)	560-2	554 (600-2)

KEY WEST, FLORIDA
Amdt 3 21MAY20

24°34'N-81°41'W KEY WEST NAS (BOCA CHICA FLD) (KNQX)

HI-TACAN Z RWY 4

SE-3, 25 FEB 2021 to 25 MAR 2021

SE-3, 25 FEB 2021 to 25 MAR 2021