

KEY WEST, FLORIDA

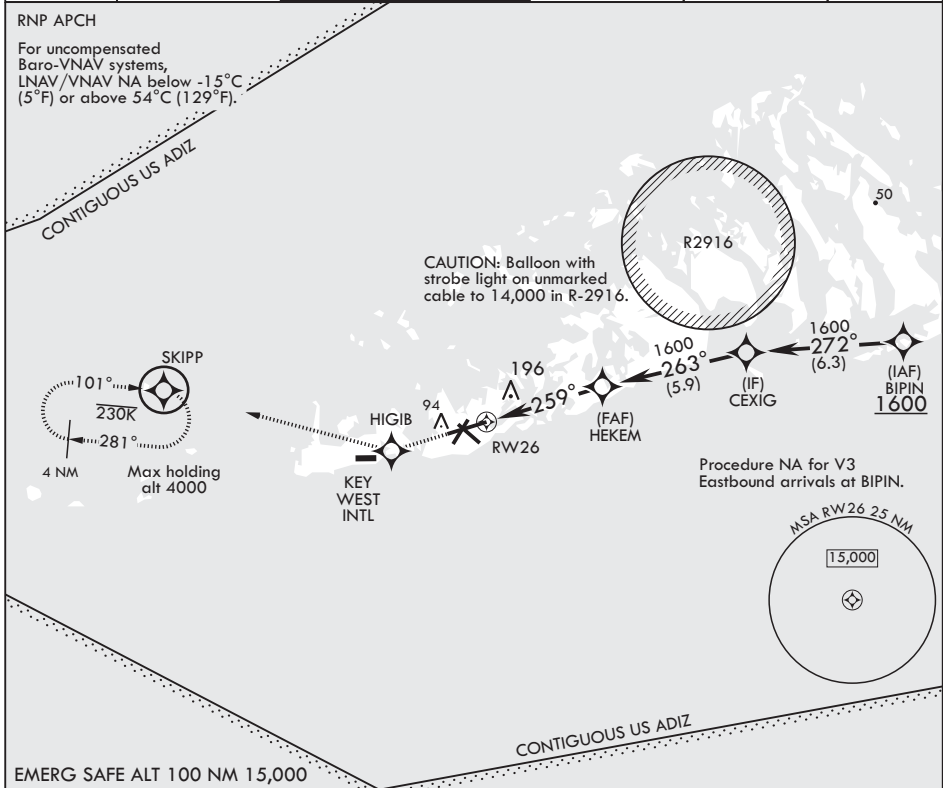
# RNAV (GPS) RWY 26

APCH CRS <b>259°</b>	Rwy Idg TDZE Arpt Elev	<b>10,001</b> <b>6</b> <b>6</b>
-------------------------	------------------------------	---------------------------------------

AL-214 (USN) KEY WEST NAS (BOCA CHICA FLD) (KNQX)

**▽** MISSED APPROACH: Climb to 1600 direct HIGIB, track 291° to SKIPP and hold.

ATIS* <b>307.025</b>	APP CON <b>124.025 313.7</b>	NAVY KEY WEST TOWER* <b>118.575 340.25</b>	GND CON <b>121.7 336.45</b>	CLNC DEL <b>121.2 357.4</b>	ASR/PAR
-------------------------	---------------------------------	---	--------------------------------	--------------------------------	---------



SE-3, 25 FEB 2021 to 25 MAR 2021

SE-3, 25 FEB 2021 to 25 MAR 2021

1600 ↑ HIGIB					ELEV 6	TDZE 6
<p>*RNAV only</p> <p>RW26 ← *1.2 NM to RW26 ← 259° ← HEKEM ← 263° ← CEXIG ← 1600</p> <p>GP 3.00° TCH 45</p> <p>4.9 NM</p>						
CATEGORY	A	B	C	D		
LNAV/VNAV DA	291-7/8 285 (300-7/8)	302-7/8 296 (300-7/8)	310-7/8 304 (400-7/8)	321-7/8 315 (400-7/8)		
LNAV MDA	420-1 414 (500-1)	500-1 494 (500-1)	420-1 1/8 494 (500-1 1/2)	414 (500-1 1/8)		
Ⓢ CIRCLING	460-1 454 (500-1)	500-1 494 (500-1)	500-1 1/2 494 (500-1 1/2)	560-2 554 (600-2)	HIRL all Rwys	

KEY WEST, FLORIDA 24°34'N - 81°41'W KEY WEST NAS (BOCA CHICA FLD) (KNQX)

Amdt 1 21MAY20

# RNAV (GPS) RWY 26