

KEY WEST, FLORIDA

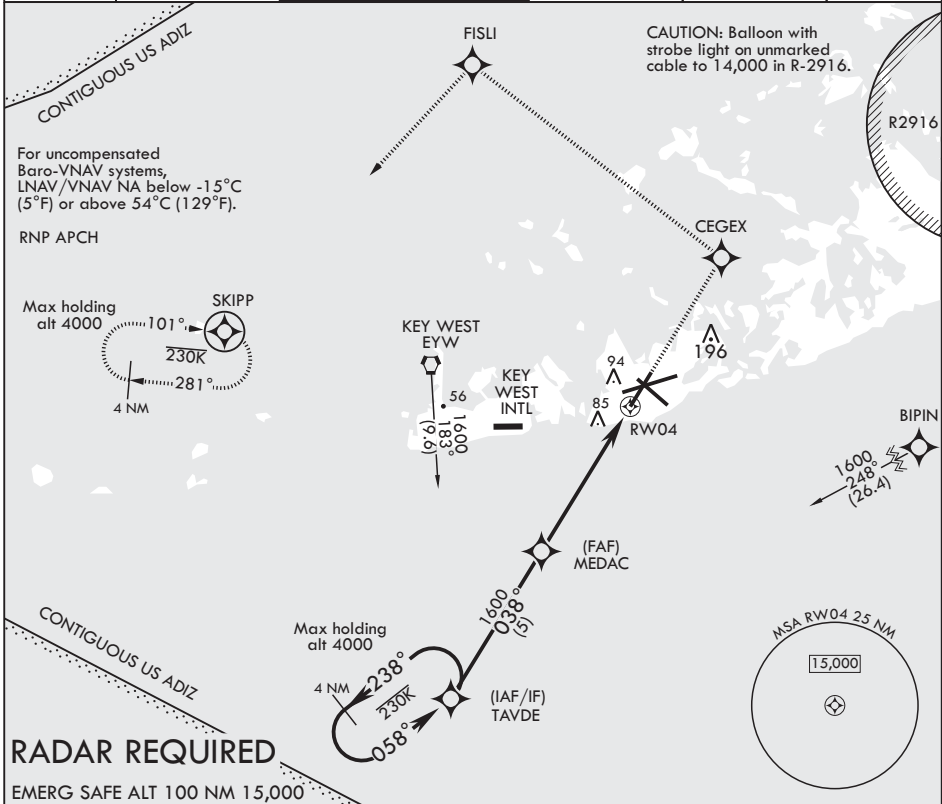
# RNAV (GPS) RWY 4

APCH CRS <b>038°</b>	Rwy Idg <b>7002</b>
TDZE <b>4</b>	Arprt Elev <b>6</b>

AL-214 (USN) KEY WEST NAS (BOCA CHICA FLD) (KNQX)

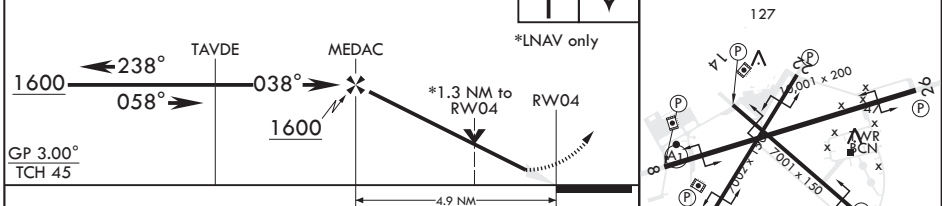
**MISSED APPROACH:** (Do not exceed 230 KIAS until CEGEX.) Climb to 1600 direct CEGEX, track 314° to FISLI, track 229° to SKIPP and hold.

ATIS* <b>307.025</b>	APP CON <b>124.025 313.7</b>	NAVY KEY WEST TOWER* <b>118.575 340.25</b>	GND CON <b>121.7 336.45</b>	CLNC DEL <b>121.2 357.4</b>	ASR/PAR
-------------------------	---------------------------------	---	--------------------------------	--------------------------------	---------



EMERG SAFE ALT 100 NM 15,000

VGSI and RNAV glidepath not coincident (VGSI Angle 3.00/TCH 35).



CIRCLING	460-1 454 (500-1)	500-1 494 (500-1)	500-1½ 494 (500-1½)	560-2 554 (600-2)
CATEGORY	A	B	C	D
RNAV/VNAV DA	245-¾		250	(300-¾)
RNAV MDA	460-1	456 (500-1)	460-1¾	456 (500-1¾)

KEY WEST, FLORIDA 24°34'N - 81°41'W KEY WEST NAS (BOCA CHICA FLD) (KNQX)

Amdt 1 21MAY20

# RNAV (GPS) RWY 4

SE-3, 25 FEB 2021 to 25 MAR 2021

SE-3, 25 FEB 2021 to 25 MAR 2021