

KEY WEST, FLORIDA

TACAN Y RWY 8

TACAN Chan 78	APCH CRS 072°	Rwy ldg TDZE Arprt Elev	10,001 4 6
-------------------------	-------------------------	-------------------------------	---------------------------------------

AL-214 [USN]

KEY WEST NAS (BOCA CHICA FLD) (KNQX)

▼ * When ALS inop, increase CAT AB vis to 1 mile, CAT CD vis to 1 3/8 miles.

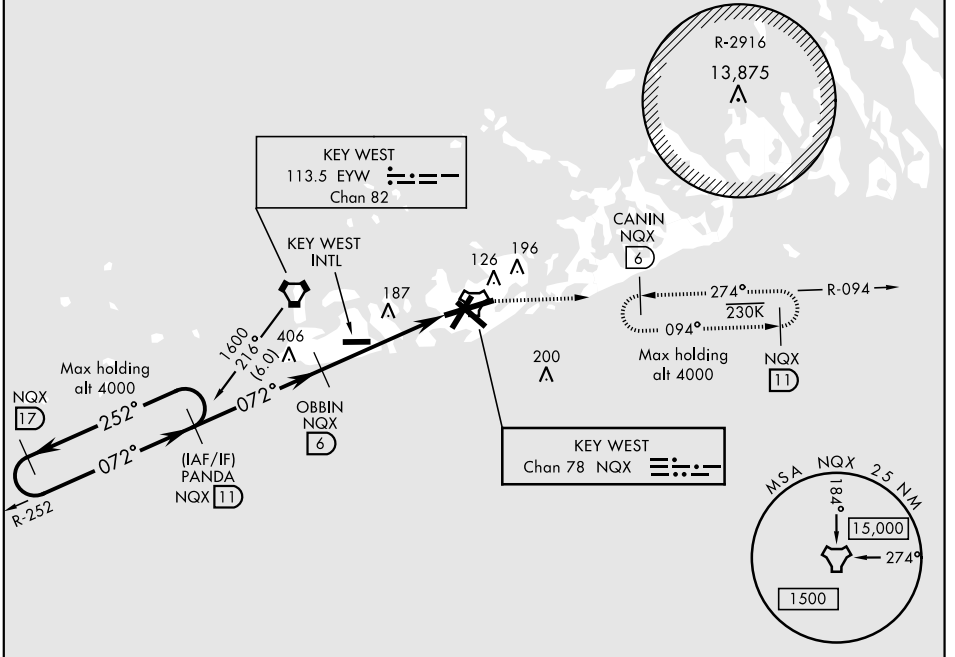
ALSf-1

MISSED APPROACH: Climb to 1600 via R-252 to NQX TACAN then via R-094 to CANIN (NQX R-094/6 DME) and hold.

ATIS * 307.025	NAVY KEY WEST APP CON 124.025 313.7	NAVY KEY WEST TOWER * 118.575 340.25	GND CON 121.7 336.45	CLNC DEL 121.2 357.4	ASR/PAR
--------------------------	---	--	--------------------------------	--------------------------------	---------

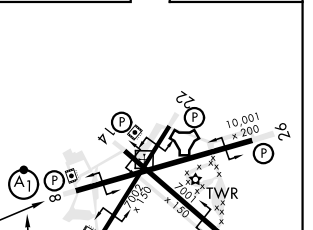
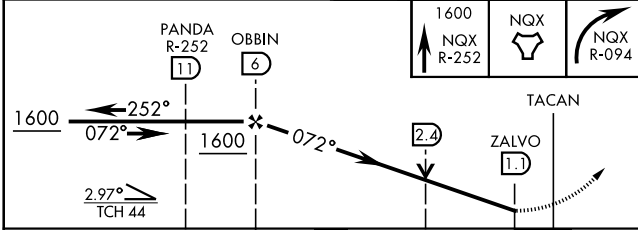
CAUTION: CAT CD intmed seg len 5 NM.

CAUTION:
Balloon with strobe light
on unmarked cable to
14,000 in R-2916.



EMERG SAFE ALT 100 NM 15,000

ELEV 6	TDZE 4
---------------	---------------



CATEGORY	A		B		C		D	
S-8 *	460-1/2	456 (500-1/2)	460-7/8	456 (500-7/8)				
CIRCLING	460-1 454 (500-1)	500-1 494 (500-1)	500-1 1/2 494 (500-1 1/2)	560-2 554 (600-2)				

HIRL all Rwy

KEY WEST, FLORIDA
Amdt 3 21MAY20

24°34'N-81°41'W KEY WEST NAS (BOCA CHICA FLD) (KNQX)

TACAN Y RWY 8

SE-3, 25 FEB 2021 to 25 MAR 2021

SE-3, 25 FEB 2021 to 25 MAR 2021