

VOR/DME RWY 26

EYW VORTAC 113.5 Chan 82	APCH CRS 270°	Rwy Ldg 10,001 TDZE 6 Arprt Elev 6
--	-------------------------	---

AL-214 [USN]

KEY WEST NAS (BOCA CHICA FLD) (KNQX)

† MISSED APPROACH: Climbing left turn to 1600 to intercept EYW R-090 to CANIN and hold.

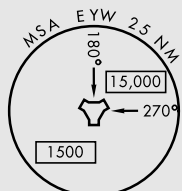
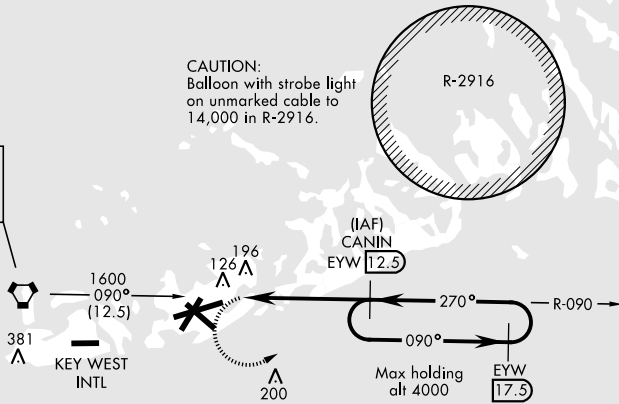
ATIS ★ 307.025	NAVY KEY WEST APP CON 124.025 313.7	NAVY KEY WEST TOWER ★ 118.575 340.25	GND CON 121.7 336.45	CLNC DEL 121.2 357.4	ASR/PAR
--------------------------	---	--	--------------------------------	--------------------------------	---------

Knots	60	120	180	240	300	360
V/V(fpm)	290	580	870	1160	1450	1740

CAUTION: Final approach course crosses the extended runway centerline 5022' from threshold.

† CAUTION: Missed Approach Minimum Climb Rate to 1600

KEY WEST
113.5 EYW Chan 82

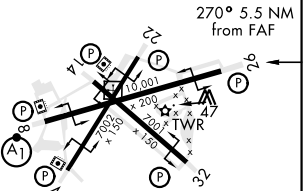
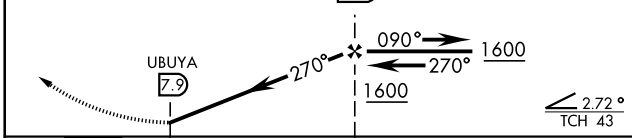


RADAR REQUIRED

EMEG SAFE ALT 100 NM 15,000

1600 EYW R-090	CANIN EYW R-090 12.5	(IAF) CANIN EYW R-090 12.5	VGSI and descent angles to coincident. (VGSI angle 3.00/TCH 43)
----------------------	-------------------------------	--	--

ELEV 6	TDZE 6
--------	--------



CATEGORY	A	B	C	D
S-26	460-1	454 (500-1)	460-1 3/8	454 (500-1 3/8)
CIRCLING	460-1 454 (500-1)	500-1 494 (500-1)	500-1 1/2 494 (500-1 1/2)	560-2 554 (600-2)

HIRL all Rwy

VOR/DME RWY 26

SE-3, 25 FEB 2021 to 25 MAR 2021

SE-3, 25 FEB 2021 to 25 MAR 2021