

MAYPORT, FLORIDA

COPTER TACAN RWY 23

TACAN Chan 51	APCH CRS 221°	Rwy Ldg TDZE Arprt Elev 8001 15 15
-------------------------	-------------------------	--

AL-722 [USN]

MAYPORT NS (ADM DAVID L. MC DONALD FLD) (KNRB)

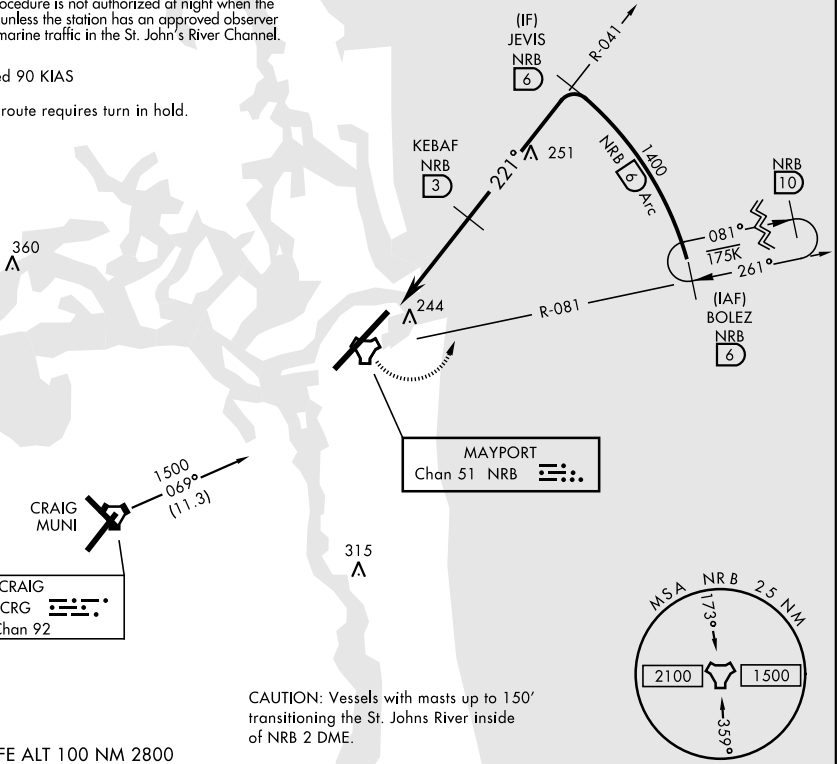
▼ MISSED APPROACH: Climbing left turn to 1500 via NRB TACAN R-081 to BOLEZ and hold.

ATIS ★ 236.775	JACKSONVILLE APP CON 124.9 308.4	MAYPORT TOWER ★ 118.75 239.3	GND CON 126.5 233.7	ASR/PAR
--------------------------	--	--	-------------------------------	---------

CAUTION: Procedure is not authorized at night when the VGS1 is inop, unless the station has an approved observer watching for marine traffic in the St. John's River Channel.

Max airspeed 90 KIAS

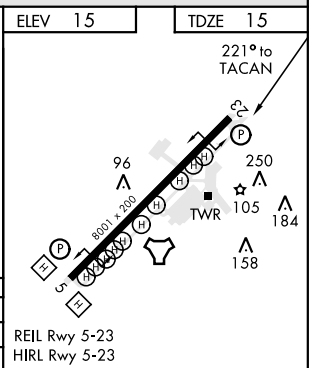
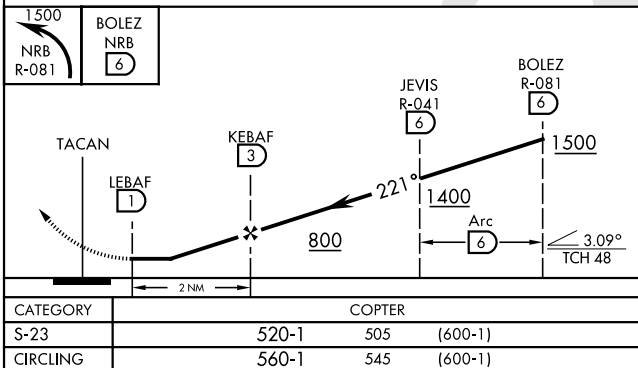
CRG Feeder route requires turn in hold.



SE-3, 25 FEB 2021 to 25 MAR 2021

SE-3, 25 FEB 2021 to 25 MAR 2021

EMERG SAFE ALT 100 NM 2800



MAYPORT, FLORIDA
Amdt 2 19JUL18

30°23'N-81°25'W MAYPORT NS (ADM DAVID L. MC DONALD FLD) (KNRB)

COPTER TACAN RWY 23