

ILS Z or RNAV (GPS) RWY 14

LOC I-NSE 111.75	APCH CRS 139°	Rwy ldg TDZE Arprt Elev 6001 199 199
----------------------------	-------------------------	--

AL-602 [USN]

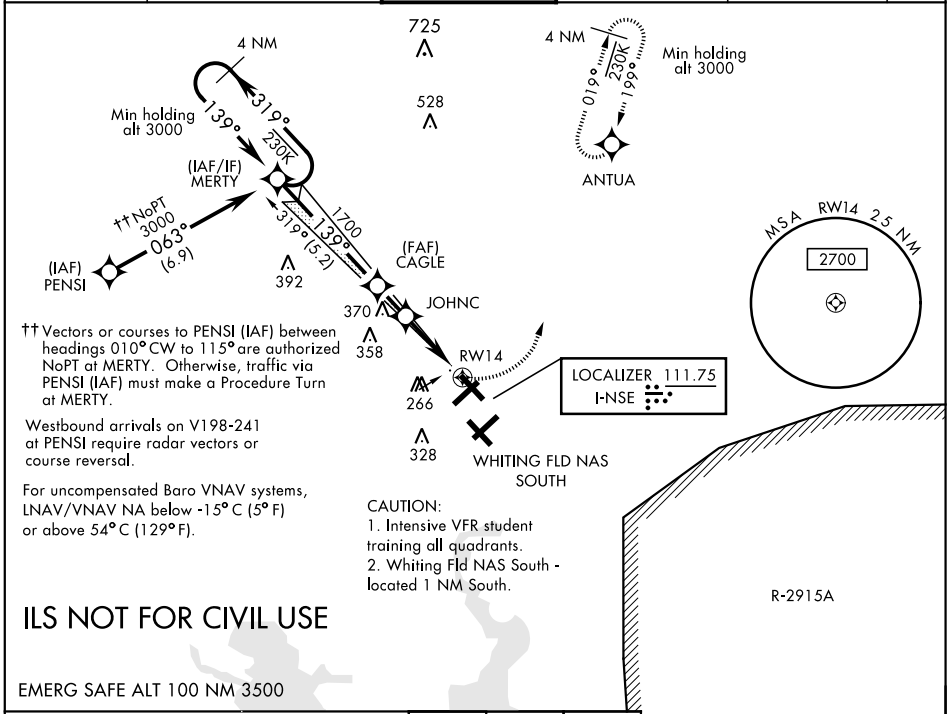
WHITING FLD NAS - NORTH (KNSE)

RNAV1 - GPS for ILS.
RNP APCH for LNAV/VNAV, LNAV.
 ▼ * When ALS inop, increase vis to 3/4 mile.
 ** When ALS inop, increase vis to 1 mile.
 *** Circling not authorized in sector SE of Rwy 5-23 and SW of Rwy 14-32.



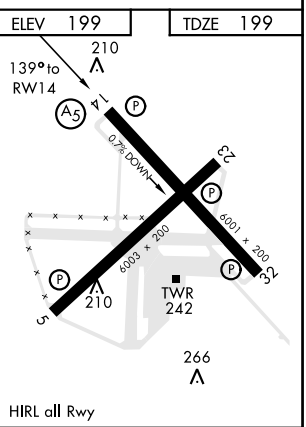
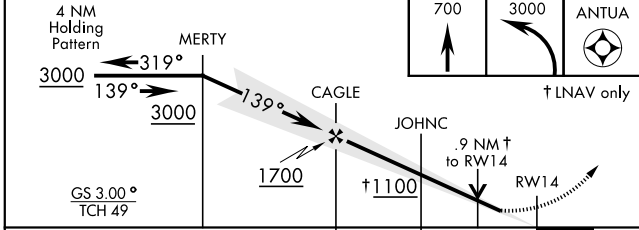
MISSED APPROACH: Climb to 700, then climbing left turn to 3000 direct to ANTUA and hold. Continue climb in hold. Contact Pensacola APP CON.

ATIS ★ 290.325	PENSACOLA APP CON 127.35 278.8	NORTH WHITING TOWER ★ 121.4 306.925	GND CON 251.15	CLNC DEL 257.775	ASR
--------------------------	--	---	--------------------------	----------------------------	-----



ILS NOT FOR CIVIL USE

EMERG SAFE ALT 100 NM 3500



CATEGORY	A	B	C	D
S-ILS 14 *	424-1/2	225	(300-1/2)	
LNAV/VNAV DA *	449-1/2	250	(300-1/2)	
LNAV MDA **	520-1/2	321	(400-1/2)	
CIRCLING ***	600-1 401 (500-1)	660-1 461 (500-1)	660-1 1/2 461 (500-1 1/2)	760-2 561 (600-2)

ILS Z or RNAV (GPS) RWY 14

SE-3, 25 FEB 2021 to 25 MAR 2021

SE-3, 25 FEB 2021 to 25 MAR 2021