

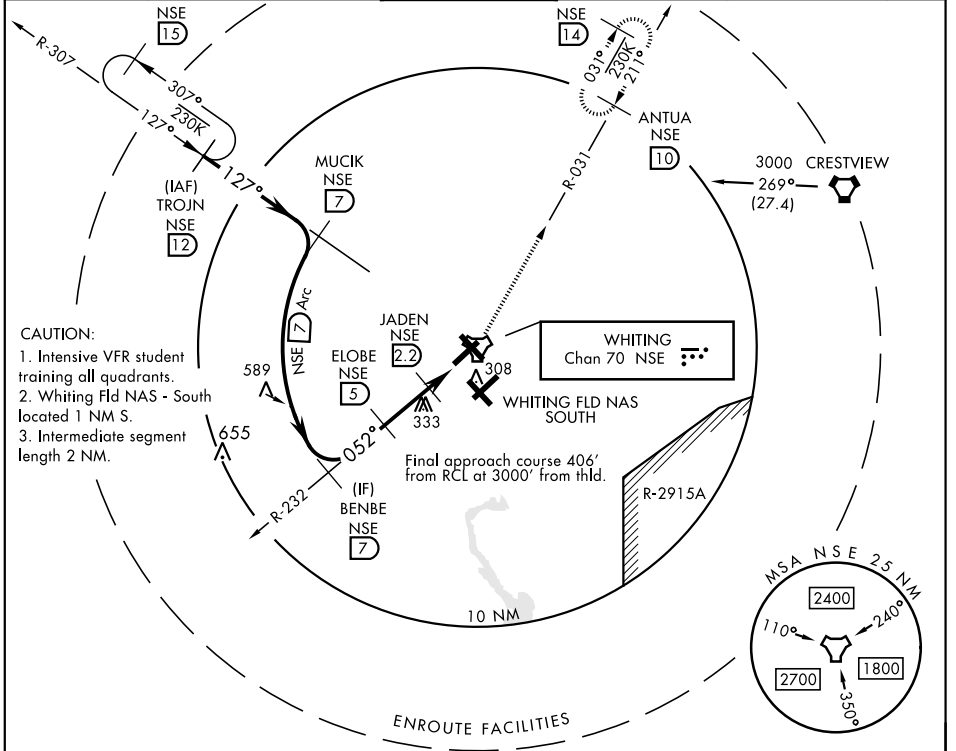
# TACAN RWY 5

TACAN NSE Chan <b>70</b>	APCH CRS <b>052°</b>	Rwy ldg TDZE Arprt Elev <b>6003</b> <b>180</b> <b>199</b>	AL-602 [USN]	WHITING FLD NAS - NORTH (KNSE)
-----------------------------	-------------------------	--	--------------	--------------------------------

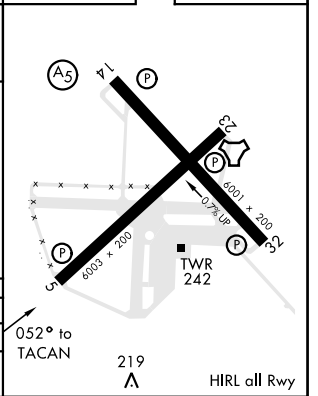
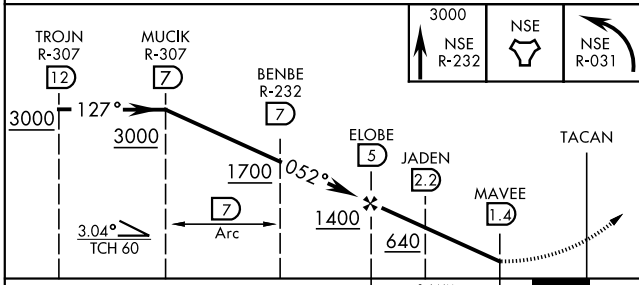
\* Circling not authorized in sector SE of Rwy 5-23 and SW of Rwy 14-32.
 

 MISSED APPROACH: Climb to 3000 via R-232 to NSE TACAN. Then via NSE TACAN R-031 to ANTUA and hold. Continue climb in hold. Contact Pensacola APP CON.

ATIS ★ <b>290.325</b>	PENSACOLA APP CON <b>127.35 278.8</b>	NORTH WHITING TOWER ★ <b>121.4 306.925</b>	GND CON <b>251.15</b>	CLNC DEL <b>257.775</b>	ASR
--------------------------	--	--	--------------------------	----------------------------	-----



EMERG SAFE ALT 100 NM 3500 ELEV 199 | TDZE 180



CATEGORY	A	B	C	D
S-5		520-1	340 (400-1)	
<b>CIRCLING</b> *	600-1 401 (400-1)	660-1 461 (500-1)	660-1½ 461 (500-1½)	760-2 561 (600-2)

# TACAN RWY 5

SE-3, 25 FEB 2021 to 25 MAR 2021

SE-3, 25 FEB 2021 to 25 MAR 2021