

OXNARD, CALIFORNIA

# RNAV (GPS) RWY 21

APCH CRS	Rwy Idg	11,102
212°	TDZE	13
	Arpt Elev	13

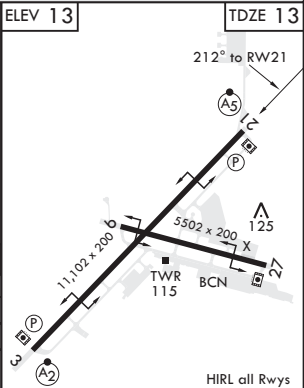
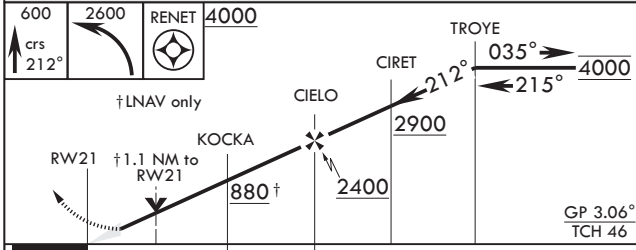
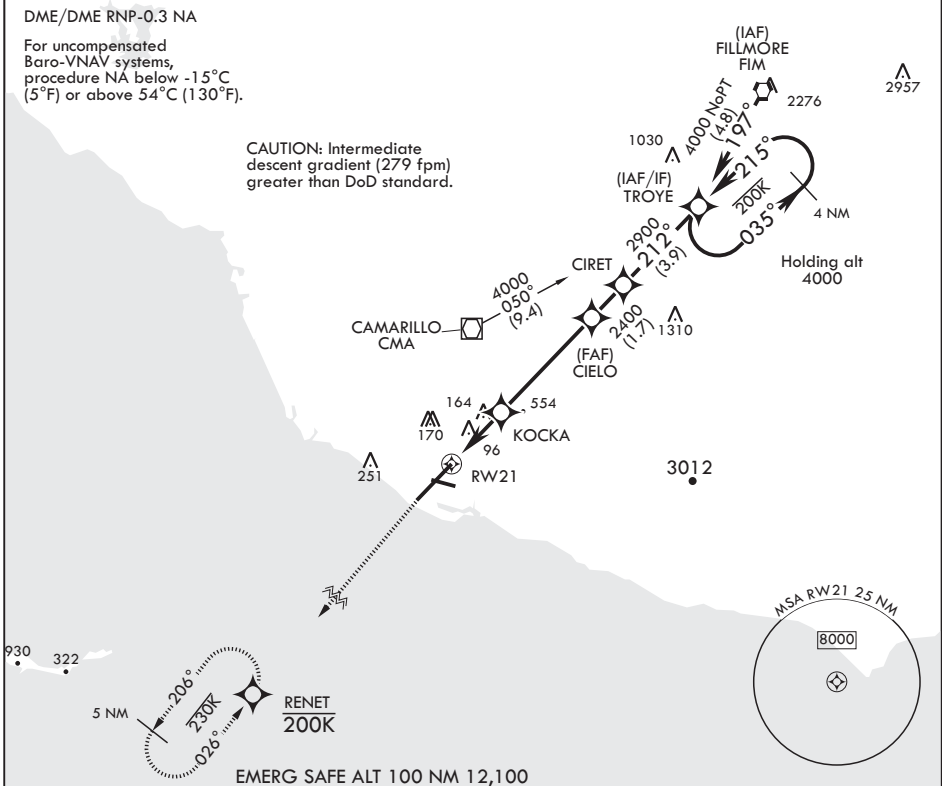
AL-925 (USN)

POINT MUGU NAS (NAVAL BASE VENTURA CO) (KNTD)

\* When ALS inop, increase vis to 7/8 mile.  
 \*\* When ALS inop, increase CAT AB vis to 1 mile; CAT CD vis to 1 1/8 miles.  
 \*\*\* Circling not authorized E of Rwy 3-21.

MALSRL MISSED APPROACH: Climb to 600 then climbing left turn to 2600 direct RENET and hold.

ATIS*	APP CON/DEP CON	TOWER*	GND CON	CLNC DEL	ASR/PAR
125.55 363.05	128.65 307.275	124.85 290.375	121.6 360.2	120.75 279.55	



CATEGORY	A	B	C	D
LNAV/VNAV DA*	289-1/2		276	(300-1/2)
LNAV MDA**	420-1/2	407 (500-1/2)	420-3/4	407 (500-3/4)
CIRCLING***	440-1 427 (500-1)	480-1 467 (500-1)	480-1 1/2 467 (500-1 1/2)	580-2 567 (600-2)

OXNARD, CALIFORNIA

34°07'N - 119°07'W POINT MUGU NAS (NAVAL BASE VENTURA CO) (KNTD)

Amdt 5 31DEC20

# RNAV (GPS) RWY 21

SW-3, 25 FEB 2021 to 25 MAR 2021

SW-3, 25 FEB 2021 to 25 MAR 2021