

OXNARD, CALIFORNIA

# RNAV (GPS) RWY 3

APCH CRS <b>032°</b>	Rwy Idg <b>11,102</b>
	TDZE <b>10</b>
	Arpt Elev <b>13</b>

AL-925 (USN)

POINT MUGU NAS (NAVAL BASE VENTURA CO) (KNTD)

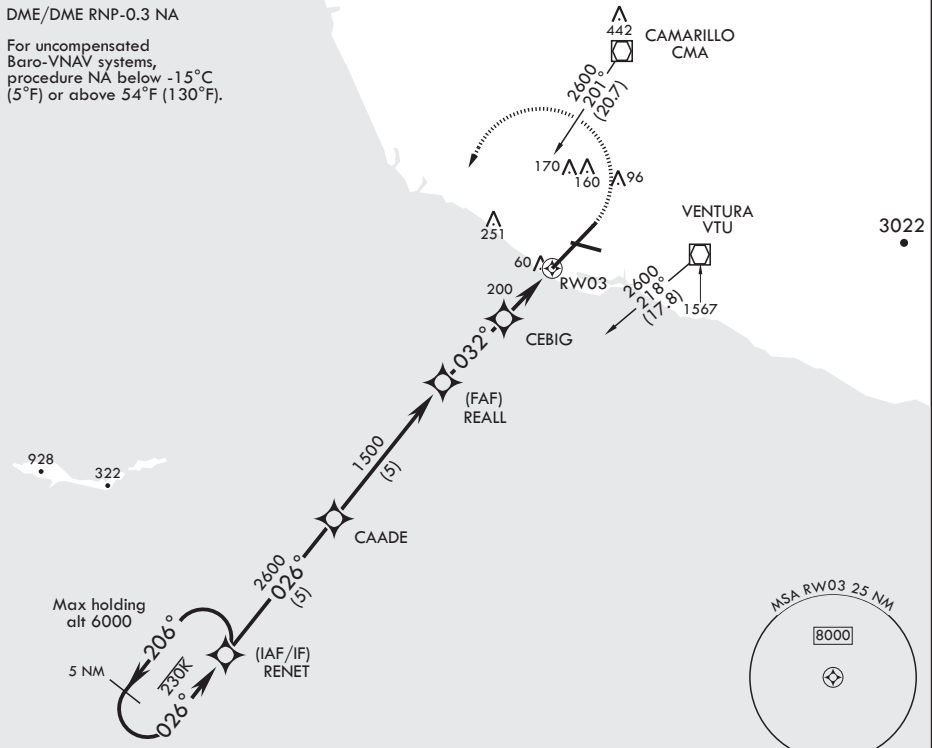
**▼** \* When ALS inop, increase CAT D vis to 7/8 mile.  
 \*\* When ALS inop, increase vis to 1 mile.  
 \*\*\* Circling not authorized E of Rwy 3-21.

**SALS** MISSED APPROACH: Climb to 600 then climbing left turn to 2600 direct RENET and hold.  
**(A2)**

ATIS★ <b>125.55 363.05</b>	APP CON/DEP CON <b>128.65 307.275</b>	TOWER★ <b>124.85 290.375</b>	GND CON <b>121.6 360.2</b>	CLNC DEL <b>120.75 279.55</b>	ASR/PAR
-------------------------------	--	---------------------------------	-------------------------------	----------------------------------	---------

DME/DME RNP-0.3 NA

For uncompensated Baro-VNAV systems, procedure NA below -15°C (5°F) or above 54°F (130°F).



EMERG SAFE ALT 100 NM 12,100

	600      2600      RENET      ELEV 13      TDZE 10			
	GP 3.00° TCH 46			
CATEGORY	A	B	C	D
LNAV/VNAV DA*	261-3/4	251	(300-3/4)	266-3/4 256 (300-3/4)
LNAV MDA**	320-3/4		310	(400-3/4)
CIRCLING***	440-1 427 (500-1)	480-1 467 (500-1)	480-1 1/2 467 (500-1 1/2)	580-2 567 (600-2)

OXNARD, CALIFORNIA

34°07'N - 119°07'W POINT MUGU NAS (NAVAL BASE VENTURA CO) (KNTD)

Amdt 5 31DEC20

# RNAV (GPS) RWY 3

SW-3, 25 FEB 2021 to 25 MAR 2021

SW-3, 25 FEB 2021 to 25 MAR 2021