

TACAN RWY 21

TACAN NTD Chan 43	APCH CRS 216°	Rwy Idg 11,102 TDZE 13 Arprt Elev 13
-----------------------------	-------------------------	---

AL-925 [UN]

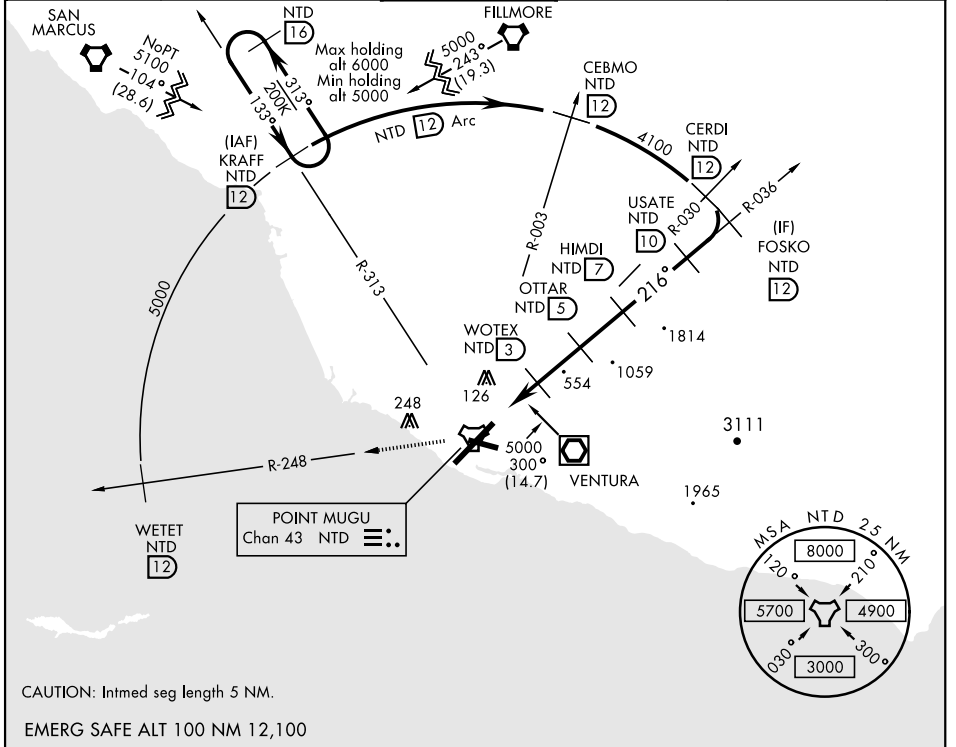
POINT MUGU NAS (KNTD)
(NAVAL BASE VENTURA CO)

* When ALS inop, increase CAT AB vis to 1 mile, CAT CD vis to 1 1/2 miles.
 ** Circling not authorized E of Rwy 3-21.

 MALSR (A5)

 MISSED APPROACH: Climb to 5000 via NTD TACAN R-036 to NTD, then via NTD R-248 to WETET. Arc NW on NTD 12 DME arc to KRAFF and hold.

ATIS * 125.55 363.05	POINT MUGU APP CON 128.65 307.275	POINT MUGU TOWER * 124.85 290.375	GND CON 121.6 360.2	CLNC DEL 120.75 279.55	ASR/PAR
--------------------------------	---	---	-------------------------------	----------------------------------	---------



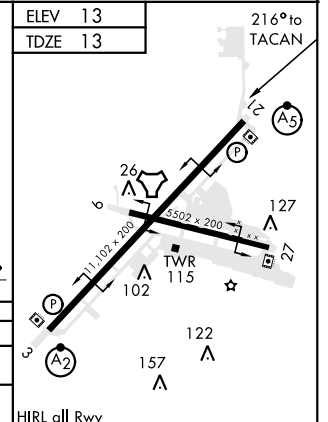
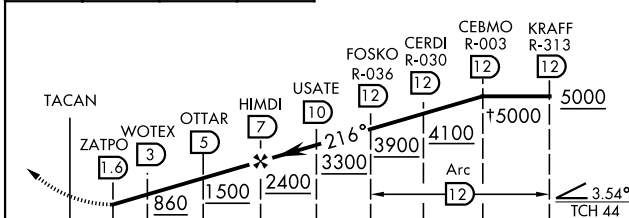
SW-3, 25 FEB 2021 to 25 MAR 2021

SW-3, 25 FEB 2021 to 25 MAR 2021

CAUTION: Intmed seg length 5 NM.

EMERG SAFE ALT 100 NM 12,100

5000 NTD R-036	NTD	WETET NTD 12	Arc NW to KRAFF	† Or as assigned.	ELEV 13	216° to TACAN
VGSi and descent angles not coincident.					TDZE 13	



CATEGORY	A	B	C	D
S-21 *	480-3/8 467 (500-3/8)		480-1 467 (500-1)	
CIRCLING **	480-1 467 (500-1)		480-1 1/2 467 (500-1 1/2)	580-2 567 (600-2)

TACAN RWY 21