

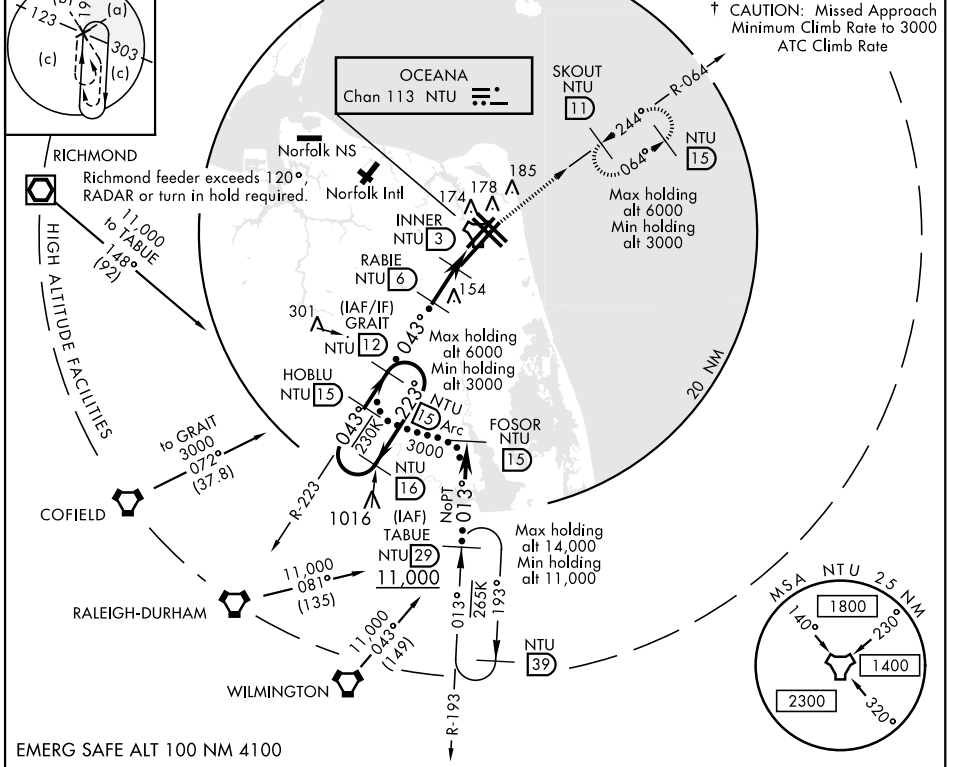
# HI-TACAN RWY 5L

TACAN NTU Chan 113	APCH CRS 043°	Rwy Idg 8000 TDZE 20 Arprt Elev 22	JAL-934 [USN]	OCEANA NAS (APOLLO SOUCEK FIELD) (KNTU)
-----------------------	------------------	--	---------------	---

† MISSED APPROACH: Climb to 3000 via R-223 to NTU TACAN and via R-064 to SKOUT and hold.

ATIS 317.6	APP CON 123.9 266.8	OCEANA TOWER 127.075 360.2	GND CON 119.6 336.4	CLNC DEL 254.4	ASR/ PAR
---------------	------------------------	-------------------------------	------------------------	-------------------	-------------

Knots	60	120	180	240	300	360
	V/V(fpm)	210	420	630	840	1050



CATEGORY	C	D	E
	S-5L	440-1½	420 (500-1½)
CIRCLING	640-1¾ 618 (700-1¾)	640-2 618 (700-2)	900-3 878 (900-3)

VIRGINIA BEACH, VIRGINIA 36°49'N-76°02'W OCEANA NAS (APOLLO SOUCEK FIELD) (KNTU)

Amtd 4 10OCT19

# HI-TACAN RWY 5L

NE-3, 25 FEB 2021 to 25 MAR 2021

NE-3, 25 FEB 2021 to 25 MAR 2021

HIRL all Rwy  
Wave-Off Lgt all Rwy