

VIRGINIA BEACH, VIRGINIA

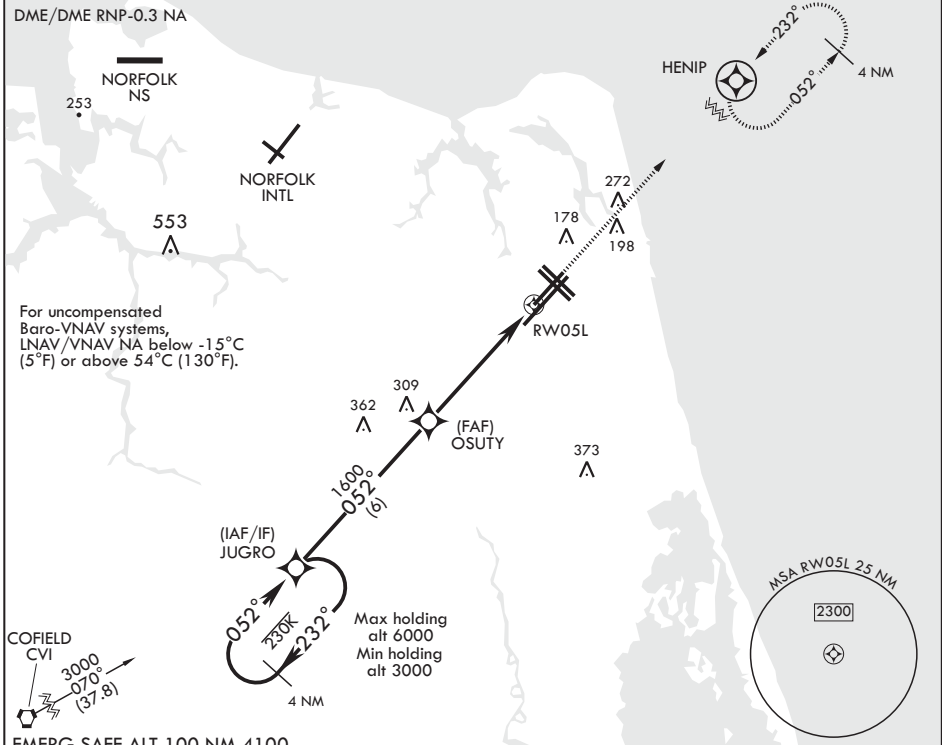
RNAV (GPS) RWY 5L

WAAS CH 63997 W05A	APCH CRS 052°	Rwy ldg TDZE Arprt Elev	8000 20 22
---------------------------------	-------------------------	-------------------------------	---------------------------------------

AL-934 (USN) OCEANA NAS (APOLLO SOUCEK FLD) (KNTU)

▽ MISSED APPROACH: Climb to 3000 direct HENIP and hold. Continue climb in hold to 3000.

ATIS 317.6	OCEANA APP CON 123.9 266.8	TOWER 127.075 360.2	GND CON 119.6 336.4	CLNC DEL 254.4	ASR/PAR
----------------------	--------------------------------------	-------------------------------	-------------------------------	--------------------------	---------

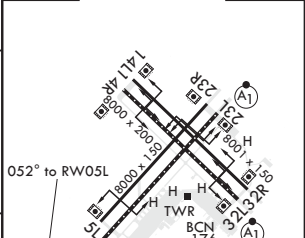
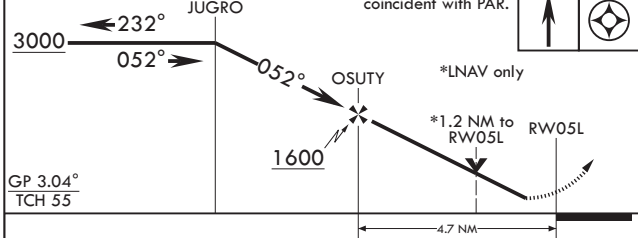


NE-3, 25 FEB 2021 to 25 MAR 2021

NE-3, 25 FEB 2021 to 25 MAR 2021

EMERG SAFE ALT 100 NM 4100

Glidepath not coincident with PAR. 3000 HENIP ELEV 22 TDZE 20



CATEGORY	A		B		C		D	
LPV DA	220-3/4		200		(200-3/4)			
LNAV/VNAV DA	314-7/8 294 (300-7/8)	325-1 305 (400-1)	333-1 313 (400-1)	344-1 324 (400-1)				
LNAV MDA	460-1	440 (500-1)	460-1 1/4	440 (500-1 1/4)				
C CIRCLING	500-1	478 (500-1)	640-1 1/4 618 (700-1 1/4)	640-2 618 (700-2)				

HIRL all Rws
Wave-Off Lights all Rws

VIRGINIA BEACH, VIRGINIA

36°49'N - 76°02'W OCEANA NAS (APOLLO SOUCEK FLD) (KNTU)

Amdt 3 10OCT19

RNAV (GPS) RWY 5L