

VIRGINIA BEACH, VIRGINIA

# RNAV (GPS) RWY 5R

WAAS CH <b>69870</b> W05B	APCH CRS <b>052°</b>	Rwy ldg TDZE Arprt Elev	<b>12,008</b> <b>19</b> <b>22</b>
---------------------------------	-------------------------	-------------------------------	---

AL-934 (USN) OCEANA NAS (APOLLO SOUCEK FLD) (KNTU)

**▽** \* When ALS inop, increase CAT AB vis to 1 mile, CAT CD vis to 1 3/8 miles.



MISSED APPROACH: Climb to 3000 direct JAGNI and hold. Continue climb in hold to 3000.

ATIS <b>317.6</b>	OCEANA APP CON <b>123.9 266.8</b>	TOWER <b>127.075 360.2</b>	GND CON <b>119.6 336.4</b>	CLNC DEL <b>254.4</b>	ASR/PAR
----------------------	--------------------------------------	-------------------------------	-------------------------------	--------------------------	---------

DME/DME RNP-0.3 NA

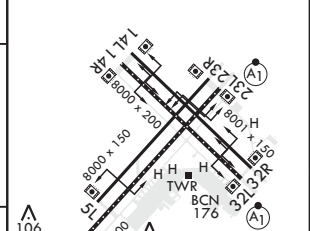
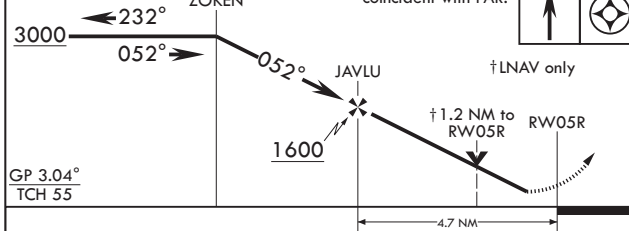
For uncompensated Baro-VNAV systems, LNAV/VNAV NA below -15°C (5°F) or above 54°C (130°F).



NE-3, 25 FEB 2021 to 25 MAR 2021

NE-3, 25 FEB 2021 to 25 MAR 2021

3000	Glidepath not coincident with PAR.	3000	JAGNI	ELEV 22	TDZE 19
------	------------------------------------	------	-------	---------	---------



CATEGORY	A	B	C	D
LPV DA*	219-1/2	200	(200-1/2)	
LNAV/VNAV DA*	341-5/8	322	(400-5/8)	
LNAV MDA*	460-1/2 441 (500-1/2)	460-3/8 441 (500-3/8)	640-1 3/4 618 (700-1 3/4)	640-2 618 (700-2)
<b>C</b> CIRCLING	500-1 478 (500-1)			

HIRL all Rwys  
Wave-Off Lights all Rwys

VIRGINIA BEACH, VIRGINIA

36°49'N - 76°02'W OCEANA NAS (APOLLO SOUCEK FLD) (KNTU)

Amdt 3 03JAN19

# RNAV (GPS) RWY 5R