

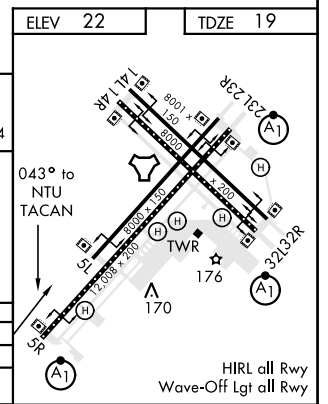
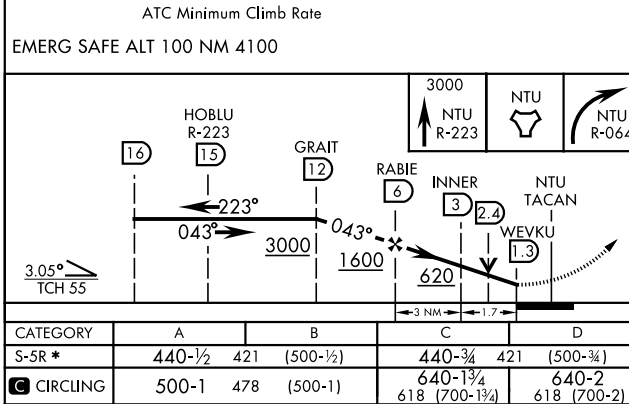
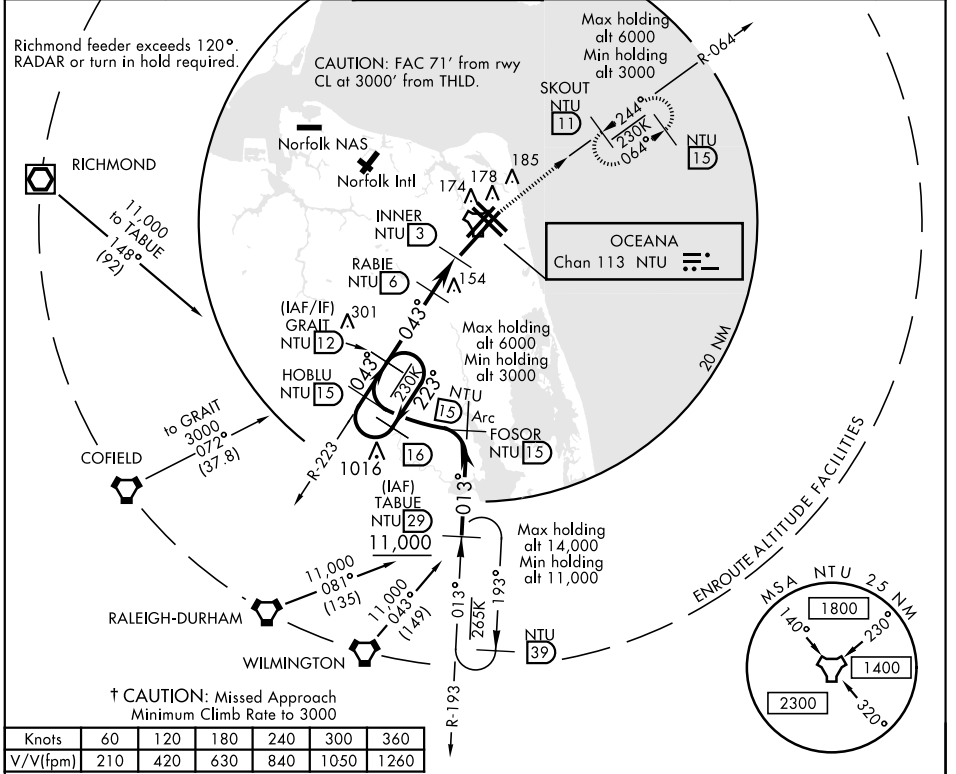
# TACAN RWY 5R

TACAN NTU Chan 113	APCH CRS 043°	Rwy Idg 12.008
		TDZE 19
		Arprt Elev 22

AL-934 [USN] OCEANA NAS (APOLLO SOUCEK FIELD) (KNTU)

▼ \* When ALS inop, increase CAT AB vis to 1 mile, CAT CD vis to 1½ miles.
† MISSED APPROACH: Climb to 3000 via R-223 to NTU TACAN and via R-064 to SKOUT and hold.

ATIS 317.6	APP CON 123.9 266.8	OCEANA TOWER 127.075 360.2	GND CON 119.6 336.4	CLNC DEL 254.4	ASR/ PAR
---------------	------------------------	-------------------------------	------------------------	-------------------	-------------



VIRGINIA BEACH, VIRGINIA 36° 49' N-76° 02' W OCEANA NAS (APOLLO SOUCEK FIELD) (KNTU)

# TACAN RWY 5R

NE-3, 25 FEB 2021 to 25 MAR 2021

NE-3, 25 FEB 2021 to 25 MAR 2021