

# WYNNS-THREE DEPARTURE (WYNNS3•WYNNS)

OCEANA NAS (APOLLO SOUCEK FIELD) (KNTU)

VIRGINIA BEACH, VIRGINIA

ATIS 317.6  
 CLNC DEL  
 254.4  
 GND CON  
 119.6 336.4  
 OCEANA TOWER  
 127.075 360.2  
 OCEANA DEP CON  
 123.9 266.8

SH-934 [USN]

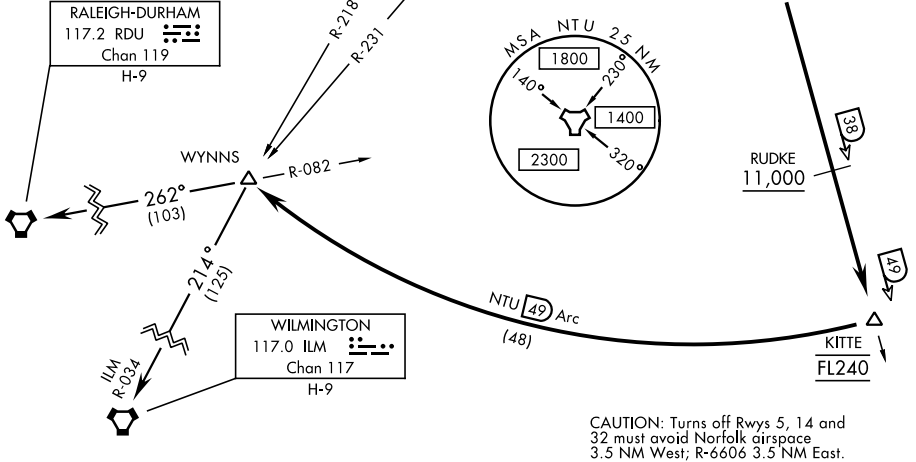
NORFOLK  
 116.9 ORF  
 Chan 116

OCEANA  
 Chan 113 NTU

Rwy	Knots	120	180	240	300	360
All	V/V(fpm)	1000	1500	2000	2500	3000

ATC Minimum Climb Rate to FL240

## NTU TACAN REQUIRED



CAUTION: Turns off Rws 5, 14 and 32 must avoid Norfolk airspace 3.5 NM West; R-6606 3.5 NM East.

NE-3, 25 FEB 2021 to 25 MAR 2021

NE-3, 25 FEB 2021 to 25 MAR 2021

**DEPARTURE ROUTE DESCRIPTION**

TAKE-OFF RWY 5L/R or 14L/R: Climbing right turn to intercept NTU TACAN R-175 to CANOB. Thence...

TAKE-OFF RWY 23L/R: Climbing left turn to intercept NTU TACAN R-175 to CANOB. Thence...

TAKE-OFF RWY 32L/R: Climbing left turn within NTU TACAN 2 DME to intercept NTU R-175. Thence...

...Via NTU R-175 to KITTE, arc south of NTU via the 49 mile arc to WYNNS. Cross RUDKE at or above 11,000. Cross KITTE at FL240, or as assigned. Thence...

RALEIGH-DURHAM TRANSITION (WYNNS3-RDU): Via RDU VORTAC R-082 to RDU.

WILMINGTON TRANSITION (WYNNS3-ILM): Via ILM VORTAC R-034 to ILM.

# WYNNS-THREE DEPARTURE (WYNNS3•WYNNS)

VIRGINIA BEACH, VIRGINIA

OCEANA NAS (APOLLO SOUCEK FIELD) (KNTU)