

HI-TACAN RWY 14

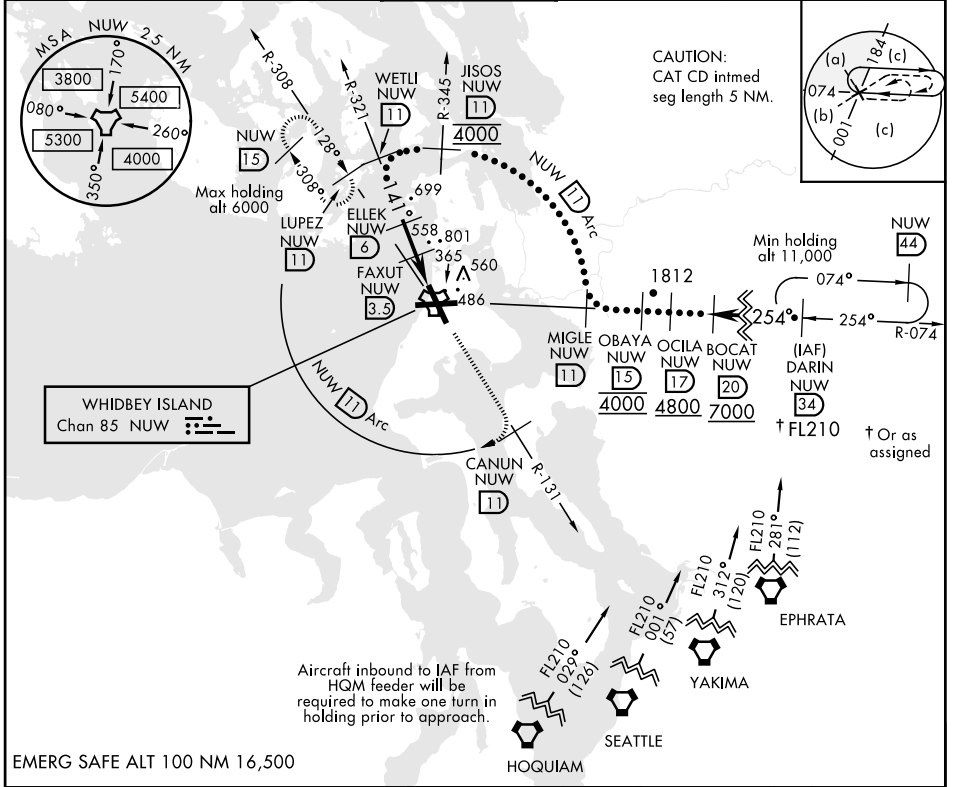
TACAN Chan 85	NUW	APCH CRS 141°	Rwy ldg TDZE Arpt Elev 8000 39 47	JAL-451 [UN]	WHIDBEY ISLAND NAS (AULT FLD) (KNUW)
-------------------------	-----	-------------------------	---	--------------	--------------------------------------

* When ALS inop, increase vis to 1 3/8 miles.

ALS-2

MISSED APPROACH: Climb to 4000 via NUW TACAN R-131 to CANUN, then arc SW of NUW TACAN via 11 DME Arc to LUPEZ and hold.

ATIS 134.15 281.5	WHIDBEY APP CON 120.7 270.8 EAST 118.2 285.65 WEST	WHIDBEY TOWER 127.9 340.2	GND CON 121.75 336.4	CLNC DEL 135.1 379.9	ASR/PAR
-----------------------------	--	-------------------------------------	--------------------------------	--------------------------------	---------



WETLI R-321 (11)	ELLEK (6)	FAXUT (3.5)	JOVPO (1.6)	TACAN (0.8)	4000 NUW R-131	CANUN NUW (11)	NUW (11) Arc	ELEV 47	TDZE 39
3000	1800	1020	2.5 NM	2.7 NM	141° to TACAN	8000 x 200	8000 x 200	141° to TACAN	167
CATEGORY	C	D	E						
S-14 *	480-7/8	441 (500-7/8)							
CIRCLING	900-2 1/2 853 (900-2 1/2)	900-2 3/4 853 (900-2 3/4)	1200-3 1153 (1200-3)					TDZ/CL Rwy 14 HIRL Rwy 7-25, 14-32	

HI-TACAN RWY 14

NW-1, 25 FEB 2021 to 25 MAR 2021

NW-1, 25 FEB 2021 to 25 MAR 2021