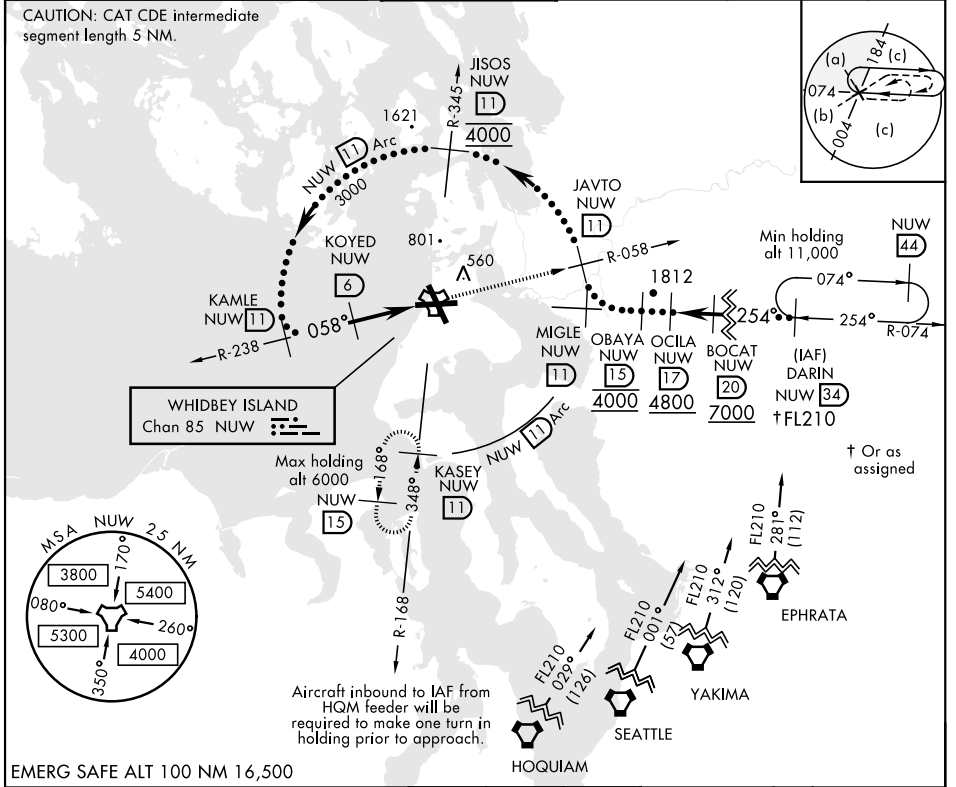


HI-TACAN RWY 7

TACAN Chan 85	APCH CRS 058°	Rwy Idg TDZE Arpt Elev 8000 25 47	JAL-451 [USN]	WHIDBEY ISLAND NAS (AULT FLD) (KNUW)
-------------------------	-------------------------	---	---------------	--------------------------------------

▼ MISSED APPROACH: Climb to 3000 via NUW TACAN R-058 to JAVTO, then arc SE of NUW via 11 DME Arc to KASEY and hold.

ATIS 134.15 281.5	WHIDBEY APP CON 120.7 270.8 EAST 118.2 285.65 WEST	WHIDBEY TOWER 127.9 340.2	GND CON 121.75 336.4	CLNC DEL 135.1 379.9	ASR/PAR
-----------------------------	--	-------------------------------------	--------------------------------	--------------------------------	---------



<p>KAMLE R-238 (11) 3000</p> <p>KOYED (6) 1800</p> <p>JOGIP (1.3)</p> <p>TACAN</p> <p>4.7 NM</p> <p>2.95° TCH 55</p>			<p>3000 NUW R-058 (11)</p> <p>JAVTO NUW (11)</p> <p>NUW (11) Arc</p>	<p>ELEV 47</p> <p>TDZE 25</p>
CATEGORY	C	D	E	
S-7	400-1	375 (400-1)		
CIRCLING	900-2½ 853 (900-2½)	900-2¾ 853 (900-2¾)	1200-3 1153 (1200-3)	
<p>OAK HARBOR, WASHINGTON 48°21'N-122°39'W WHIDBEY ISLAND NAS (AULT FLD) (KNUW)</p>				<p>TDZ/CL Rwy 14</p> <p>HIRL Rwy 7-25, 14-32</p>

HI-TACAN RWY 7

NW-1, 25 FEB 2021 to 25 MAR 2021

NW-1, 25 FEB 2021 to 25 MAR 2021