

OAK HARBOR, WASHINGTON

ILS or LOC/DME RWY 14

LOC I-NUW 110.1	APCH CRS 137°	Rwy Idg 8000
		TDZE 39
		Arprt Elev 47

AL-451 [USN]

WHIDBEY ISLAND NAS (AULT FLD) (KNUW)

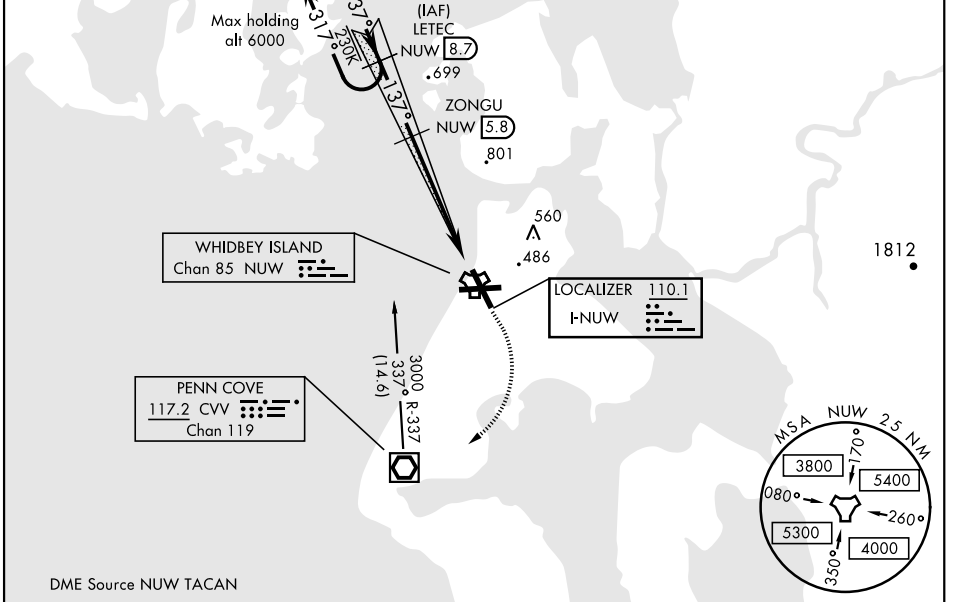
VOR, DME required.		ALS-F-2	† MISSED APPROACH: Climb to 2000 via hdg 137°, then climbing right turn to 3000, direct CVV VOR/DME, then via CVV R-337 to LETEC and hold.		
▼ * When ALS inop, increase vis to ¾ mile.					
ATIS 134.15 281.5	WHIDBEY APP CON 120.7 270.8 EAST 118.2 285.65 WEST	WHIDBEY TOWER 127.9 340.2	GND CON 121.75 336.4	CLNC DEL 135.1 379.9	ASR/PAR

** When ALS inop, increase CAT AB vis to 1 mile; CAT CDE vis to 1½ miles.

† CAUTION: Missed Approach Minimum Climb Rate to 2000

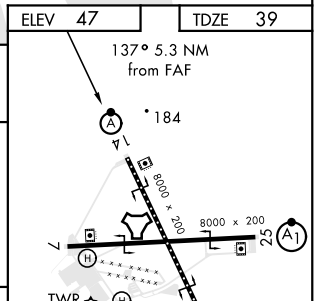
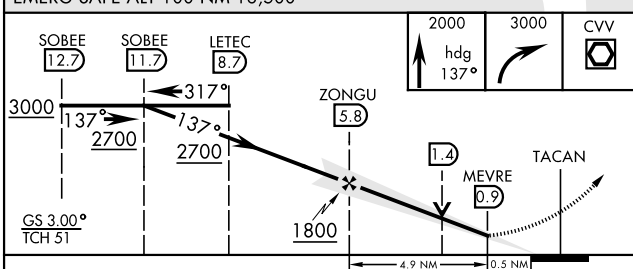
Knots	60	120	180	240	300	360
V/V(fpm)	400	800	1200	1600	2000	2400

ATC Climb Rate



DME Source NUW TACAN

EMERG SAFE ALT 100 NM 16,500



	A	B	C	D	E
S-ILS 14 *	239-½		200 (200-½)		
S-LOC 14 **	420-½	381 (400-½)	420-⅝		381 (400-⅝)
CIRCLING	700-1	800-1	900-2½	900-2¾	1200-3
	653 (700-1)	753 (800-1)	853 (900-2½)	853 (900-2¾)	1153 (1200-3)

ELEV 47	TDZE 39
TWR 167	
TDZL/CL Rwy 14	
HIRL Rwy 7-25, 14-32	

OAK HARBOR, WASHINGTON
Amdt 3 21MAY20

48°21'N-122°39'W

WHIDBEY ISLAND NAS (AULT FLD) (KNUW)

ILS or LOC/DME RWY 14

NW-1, 25 FEB 2021 to 25 MAR 2021

NW-1, 25 FEB 2021 to 25 MAR 2021