

PENN COVE FIVE DEPARTURE (CVV5.CVV)

WHIDBEY ISLAND NAS (AULT FLD) (KNUW)

OAK HARBOR, WASHINGTON

ATIS 134.15 281.5
 CLNC DEL 135.1 379.9
 GND CON 121.75 336.4
 WHIDBEY TOWER 220K
 127.9 340.2
 WHIDBEY DEP CON
 120.7 270.8 EAST
 118.2 285.65 WEST

JAL-451 [USN]

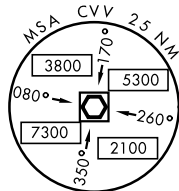
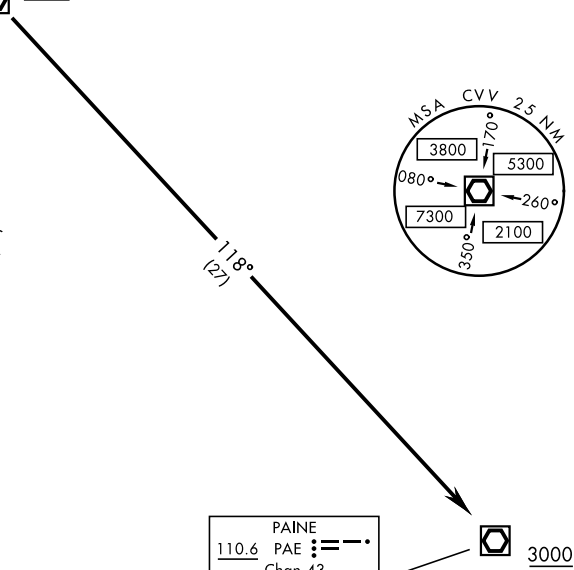
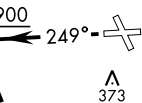
Rwy	Knots	60	120	180	240	300	360
25 (a)	V/V(fpm)	209	418	627	836	1045	1254
25 (b)	V/V(fpm)	265	530	795	1060	1325	1590

ATC Climb Rate

- (a) to 2000
- (b) to 7000

PROCEDURE NA FOR CAT E AIRCRAFT

PENN COVE
 117.2 CVV
 Chan 119



2337 A

925 A

DIGGN L-1 7000

PAINE
 110.6 PAE
 Chan 43
 L-1, H-1

3000

NW-1, 25 FEB 2021 to 25 MAR 2021

NW-1, 25 FEB 2021 to 25 MAR 2021

DEPARTURE ROUTE DESCRIPTION

TAKE-OFF RWY 25: Climb to 900 feet on heading 249°, do not exceed 220 KIAS until 900. Then climbing left turn to intercept CVV VOR/DME R-320 to CVV. Cross CVV at or above 2000 feet. Thence....

....Via assigned transition or fly heading 158° and expect vectors to join assigned route.

DIGGN TRANSITION (CVV3.DIGGN): Via CVV R-166 to DIGGN, cross DIGGN at or above 7000 feet.

PAINE TRANSITION (CVV3.PAE): Via CVV R-118 to PAE VOR/DME. Cross PAE at or above 3000 feet.

PENN COVE FIVE DEPARTURE (CVV5.CVV)

OAK HARBOR, WASHINGTON

WHIDBEY ISLAND NAS (AULT FLD) (KNUW)