

OAK HARBOR, WASHINGTON

RNAV (GPS) RWY 25

WAAS CH 44487 W25A	APCH CRS 249°	Rwy ldg TDZE 8000 28 Arprt Elev 47
--------------------------	------------------	---

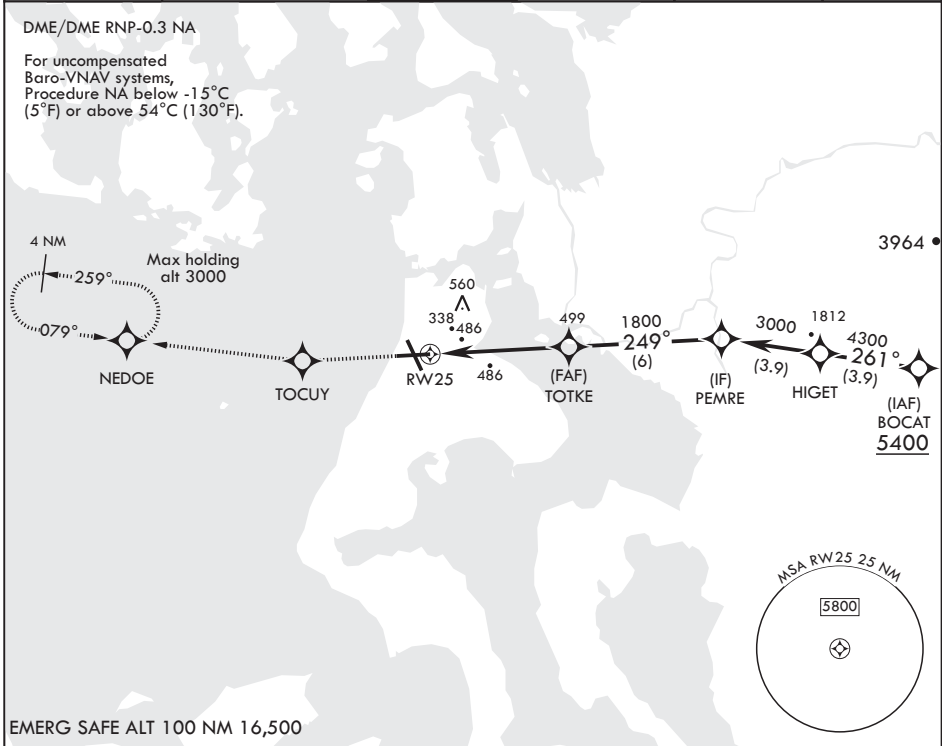
AL-451 (USN)

WHIDBEY ISLAND NAS (AULT FLD) (KNUW)

V * When ALS inop, increase vis to 3/4 mile.
 ** When ALS inop, increase vis to 1 7/8 miles.
 *** When ALS inop, increase CAT AB vis to 1 mile, CAT CD vis to 1 3/4 miles.

ALSF-1 MISSED APPROACH: Climb to 3000 DIRECT TOCUY and track 259° to NEDOE and hold, continue climb in hold.

ATIS 134.15 281.5	APP CON/DEP CON 118.2 285.65 W 120.7 270.8 E	TOWER 127.9 340.2	GND CON 121.75 336.4	CLNC DEL 135.1 379.9	ASR/PAR
----------------------	--	----------------------	-------------------------	-------------------------	---------

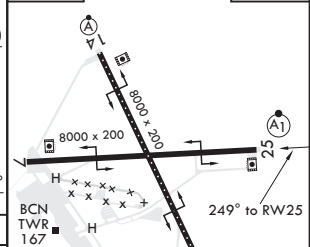
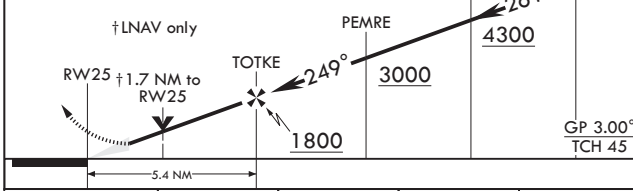


EMERG SAFE ALT 100 NM 16,500

3000	TOCUY	tr 259°	NEDOE
------	-------	---------	-------

↑ LNAV only

ELEV 47	TDZE 28
---------	---------



CATEGORY	A	B	C	D
LPV DA*	278-1/2	250	(300-1/2)	
LNAV/VNAV DA**	685-1 3/8	657	(700-1 3/8)	
LNAV MDA***	620-1/2 592	(600-1/2)	620-1 1/4 592	(600-1 1/4)
CIRCLING	700-1	800-1	900-2 1/2	900-2 3/4
	653 (700-1)	753 (800-1)	853 (900-2 1/2)	853 (900-2 3/4)

HIRL all Rwys TDZL/CL Rwy 14

OAK HARBOR, WASHINGTON

48°21'N - 122°39'W

WHIDBEY ISLAND NAS (AULT FLD) (KNUW)

Amdt 2 21MAY20

RNAV (GPS) RWY 25

NW-1, 25 FEB 2021 to 25 MAR 2021

NW-1, 25 FEB 2021 to 25 MAR 2021