

# TACAN RWY 32

TACAN NUW Chan <b>85</b>	APCH CRS <b>311°</b>	Rwy ldg <b>8000</b> TDZE <b>47</b> Arprt Elev <b>47</b>
-----------------------------	-------------------------	---

AL-451 [USN]

WHIDBEY ISLAND NAS (AULT FLD) (KNUW)

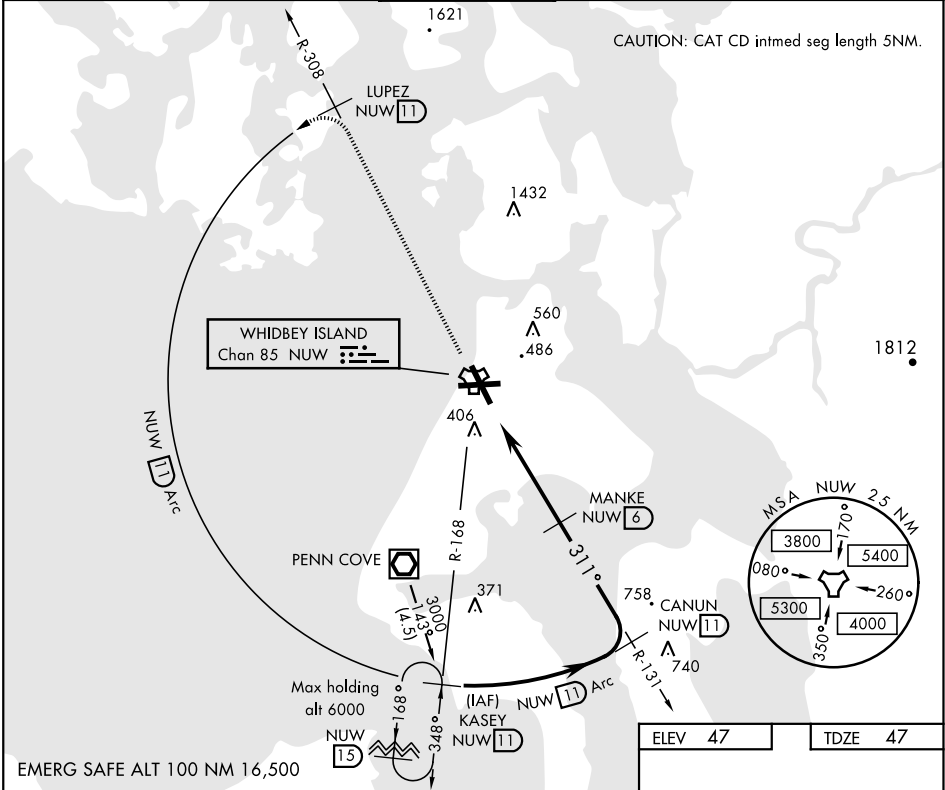
▼ \* When ALS inop, increase CAT AB vis to 1 mile, CAT CD to 1¾ miles.



MISSED APPROACH: Climb to 3000 via NUW TACAN R-308 to LUPEZ, then Arc SW of NUW via 11 DME Arc to KASEY and hold.

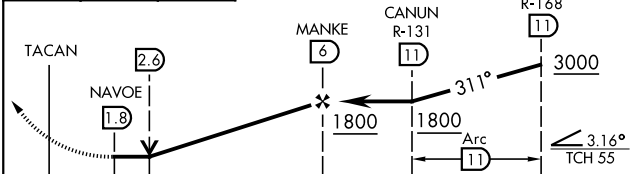
ATIS <b>134.15 281.5</b>	WHIDBEY APP CON <b>120.7 270.8</b> EAST <b>118.2 285.65</b> WEST	WHIDBEY TOWER <b>127.9 340.2</b>	GND CON <b>121.75 336.4</b>	CLNC DEL <b>135.1 379.9</b>	ASR/PAR
-----------------------------	--	-------------------------------------	--------------------------------	--------------------------------	---------

CAUTION: CAT CD intmed seg length 5NM.



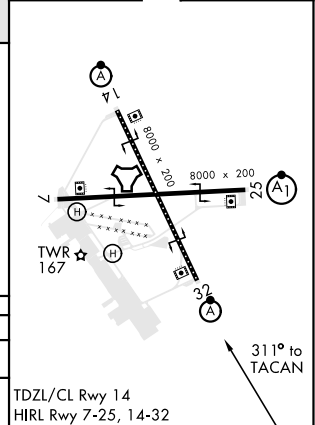
EMERG SAFE ALT 100 NM 16,500

3000 NUW R-308	LUPEZ NUW 11	NUW 11 Arc
-------------------	-----------------	---------------



CATEGORY	A	B	C	D
S-32*	660-5/8 613 (700-5/8)		660-13/8 613 (700-13/8)	
CIRCLING	760-1 713 (800-1)	800-1 753 (800-1)	900-2 1/2 853 (900-2 1/2)	900-2 3/4 853 (900-2 3/4)

ELEV 47	TDZE 47
---------	---------



NW-1, 25 FEB 2021 to 25 MAR 2021

NW-1, 25 FEB 2021 to 25 MAR 2021

# TACAN RWY 32