

QUANTICO, VIRGINIA

TACAN RWY 2

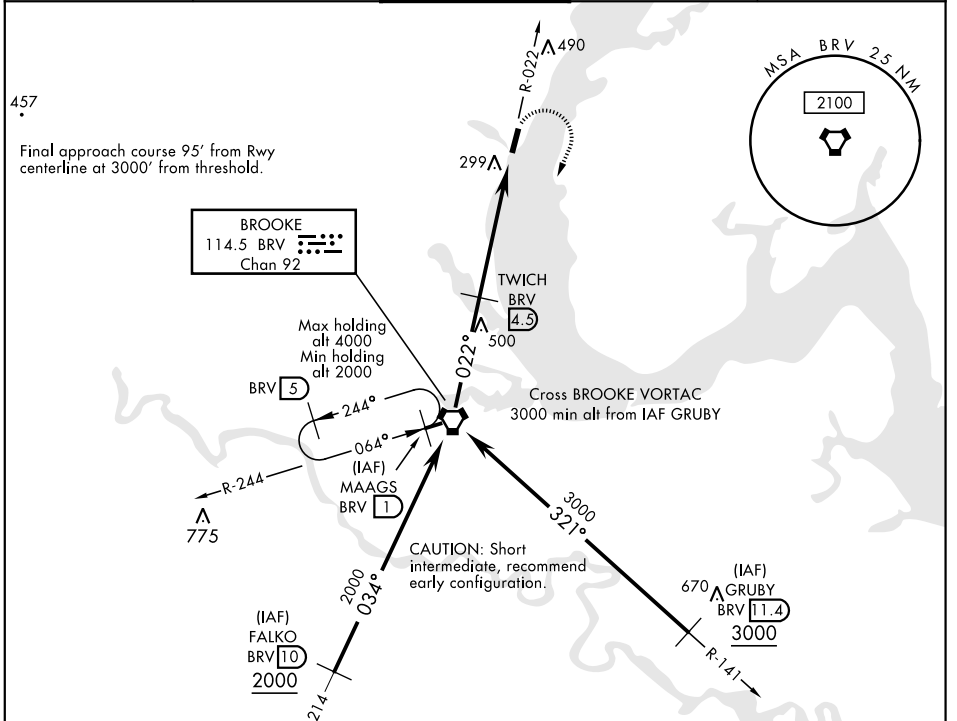
BRV VORTAC 114.5 Chan 92	APCH CRS 022°	Rwy ldg TDZE Arpt Elev 4250 10 11
--	-------------------------	---

AL-339 [USN]

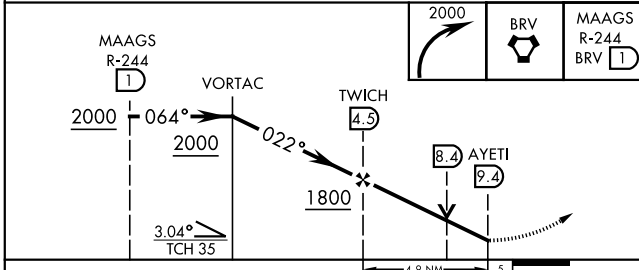
QUANTICO MCAF (TURNER FIELD) (KNYG)

▼ *Circling not authorized W of Rwy 2-20.	MISSED APPROACH: Climbing right turn to 2000 direct BRV VORTAC, then via BRV R-244 to MAAGS and hold.
---	---

ATIS ★ 263.15	POTOMAC APP CON 128.525 306.925	QUANTICO TOWER ★ 118.6 360.2	GND CON 121.75 340.2	ASR/PAR
-------------------------	---	--	--------------------------------	---------



ELEV 11	TDZE 10
---------	---------



CATEGORY	A	B	C	D
S-2	560-1	550 (600-1)	560-1½	550 (600-1½)
CIRCLING *	560-1 549 (600-1)	640-1 629 (700-1)	720-2 709 (800-2)	800-2½ 789 (800-2½)

HIRL Rwy 2-20
REIL Rwy 2-20

022° 5.4 NM from FAF

QUANTICO, VIRGINIA 38°30'N-77°18'W QUANTICO MCAF (TURNER FIELD) (KNYG)

Amdt 2 10OCT19

TACAN RWY 2

NE-3, 25 FEB 2021 to 25 MAR 2021

NE-3, 25 FEB 2021 to 25 MAR 2021