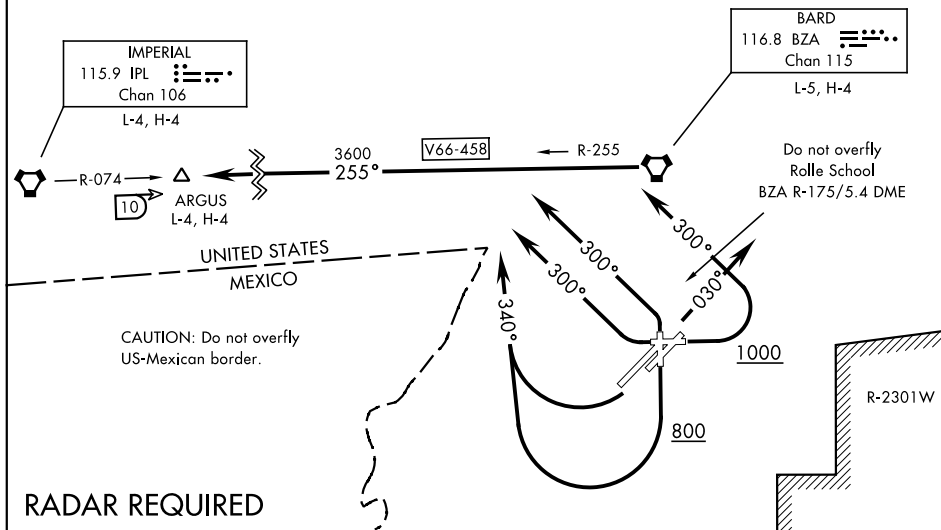


ARGUS FOUR DEPARTURE (ARGUS4•ARGUS)

SHL-511 [USN]

ATIS ★
 118.8 273.5
 CLNC DEL
 118.0 336.4
 GND CON
 121.9 314.0
 YUMA TOWER ★
 119.3 377.075
 YUMA DEP CON
 125.55 282.325
 ASOS
 256.4



SW-4, 25 FEB 2021 to 25 MAR 2021

SW-4, 25 FEB 2021 to 25 MAR 2021

RADAR REQUIRED

DEPARTURE ROUTE DESCRIPTION

- TAKE-OFF RWY 3L/R:** Climb heading 030°, then RADAR vectors to intercept BZA VORTAC R-255. Thence...
 - TAKE-OFF RWY 8:** Climb heading 078° to 1000, then climbing left turn heading 300°, then RADAR vectors to intercept BZA VORTAC R-255. Thence...
 - TAKE-OFF RWY 17:** Climb heading 168° to 800, then climbing right turn heading 340°, then RADAR vectors to intercept BZA VORTAC R-255. Thence...
 - TAKE-OFF RWY 21L/R:** Climbing right turn heading 340°, then RADAR vectors to intercept BZA VORTAC R-255. Thence...
 - TAKE-OFF RWY 26:** Climbing right turn heading 300°, then RADAR vectors to intercept BZA VORTAC R-255. Thence...
 - TAKE-OFF RWY 35:** Climbing left turn heading 300°, then RADAR vectors to intercept BZA VORTAC R-255. Thence...
- ...via BZA R-255 to ARGUS, then via assigned route. Maintain assigned altitude. Expect clearance to filed altitude/flight level 10 minutes after departure.

ARGUS FOUR DEPARTURE (ARGUS4•ARGUS)

YUMA, ARIZONA

YUMA MCAS/YUMA INTL (KNYL)

Orig 24MAY18

