

# CARGO NINE DEPARTURE (CARGO9•CARGO)

YUMA MCAS/YUMA INTL (KNYL)

YUMA, ARIZONA

ATIS ★  
 118.8 273.5  
 CLNC DEL  
 118.0 336.4  
 GND CON  
 121.9 314.0  
 YUMA TOWER ★  
 119.3 377.075  
 YUMA DEP CON  
 125.55 282.325  
 ASOS  
 256.4

SHL-511 [USN]

| Rwy  | Knots    | 60  | 120 | 180 | 240 | 300  | 360  |
|------|----------|-----|-----|-----|-----|------|------|
| 3L/R | V/V(fpm) | 225 | 450 | 675 | 900 | 1125 | 1350 |
| 26   | V/V(fpm) | 210 | 420 | 630 | 840 | 1050 | 1260 |
| 35   | V/V(fpm) | 241 | 482 | 723 | 964 | 1205 | 1446 |

ATC Climb Rate to 3600

BLYTHE  
 117.4 BLH  
 Chan 121

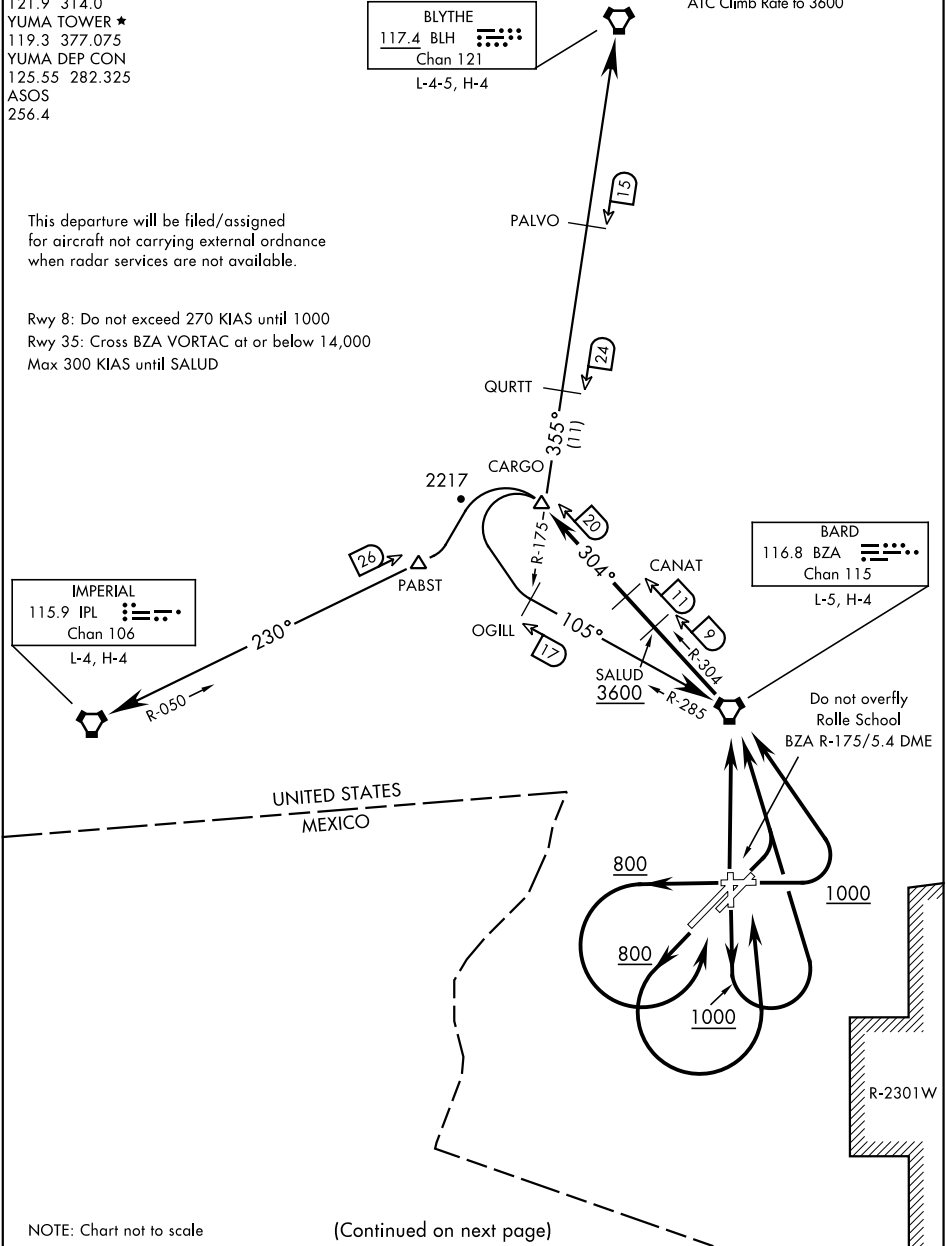
L-4-5, H-4

This departure will be filed/assigned for aircraft not carrying external ordnance when radar services are not available.

Rwy 8: Do not exceed 270 KIAS until 1000  
 Rwy 35: Cross BZA VORTAC at or below 14,000  
 Max 300 KIAS until SALUD

SW-4, 25 FEB 2021 to 25 MAR 2021

SW-4, 25 FEB 2021 to 25 MAR 2021



NOTE: Chart not to scale

(Continued on next page)

# CARGO NINE DEPARTURE (CARGO9•CARGO)

YUMA, ARIZONA

Orig 24MAY18

YUMA MCAS/YUMA INTL (KNYL)