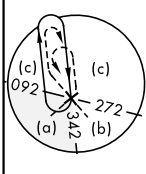
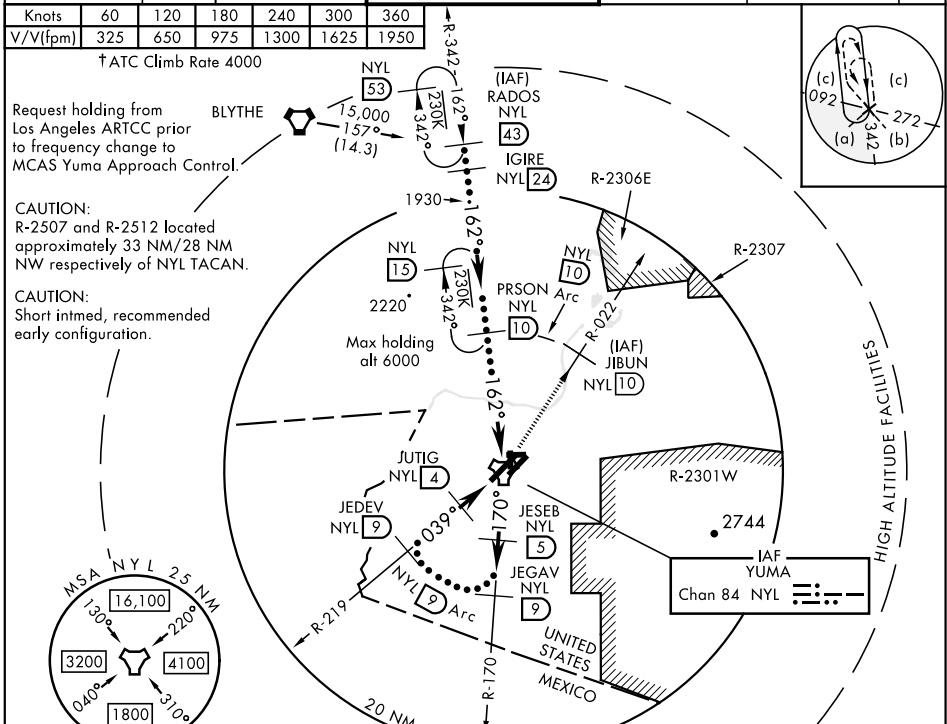


HI-TACAN RWY 3L

TACAN NYL Chan 84	APCH CRS 039°	Rwy ldg 13,300 TDZE 195 Arprt Elev 213	JAL-511 [USN]	YUMA MCAS/YUMA INTL (KNYL)
-----------------------------	-------------------------	---	---------------	----------------------------

▼ **† MISSED APPROACH:** Climbing left turn to 4000, intercept NYL TACAN R-022 to JIBUN, cross JIBUN at or above 4000.

ATIS★ 118.8 273.5	ASOS 256.4	YUMA APP CON 124.7 371.975	YUMA TOWER★ 119.3 (CTAF) 0 377.075	GND CON 121.9 314.0	CLNC DEL 118.0 336.4	ASR/ PAR
-----------------------------	----------------------	--------------------------------------	--	-------------------------------	--------------------------------	-------------



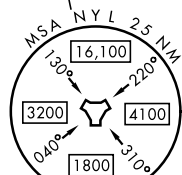
Request holding from Los Angeles ARTCC prior to frequency change to MCAS Yuma Approach Control.

CAUTION:
R-2507 and R-2512 located approximately 33 NM/28 NM NW respectively of NYL TACAN.

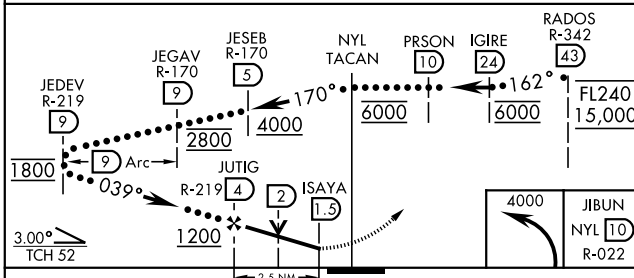
CAUTION:
Short intmed, recommended early configuration.

SW-4, 25 FEB 2021 to 25 MAR 2021

SW-4, 25 FEB 2021 to 25 MAR 2021

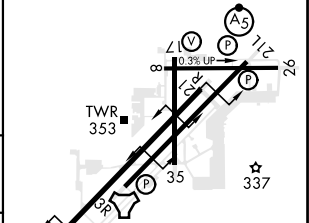


EMERG SAFE ALT 100 NM 17,100



ELEV 213	TDZE 195
----------	----------

3L-21R	13,300 x 200
3R-21L	9239 x 150
8-26	6146 x 150
17-35	5710 x 150



CATEGORY	C	D	E
S-3L		560-1	365 (400-1)
CIRCLING	800-1½ 587 (600-1½)	800-2 587 (600-2)	

REIL Rwy 35
HIRL Rwy 3R-21L
and 3L-21R
HIRL Rwy 8-26
and 17-35

HI-TACAN RWY 3L