

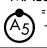
YUMA, ARIZONA

ILS or LOC/DME RWY 21R

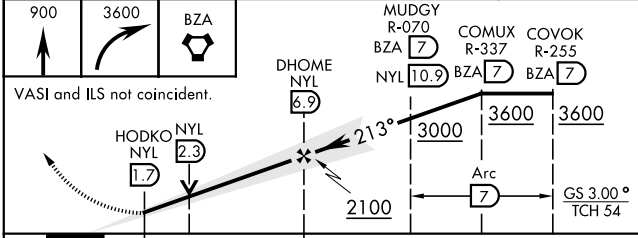
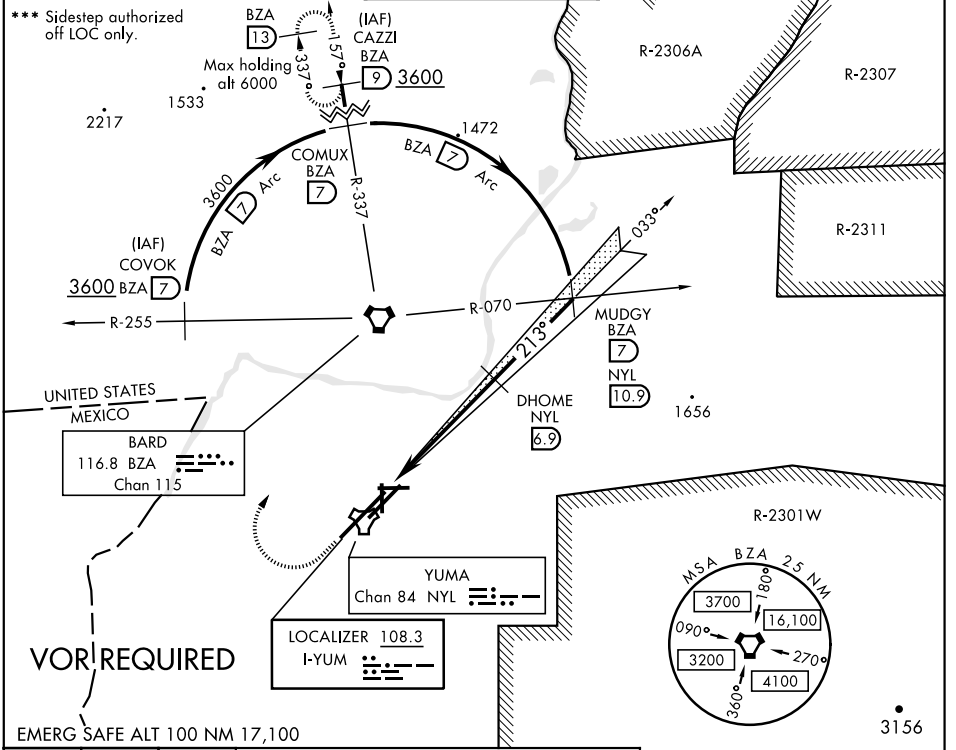
LOC I-YUM 108.3	APCH CRS 213°	Rwy Idg 21L 9239 21R 13,300 TDZE 21L 208 21R 193 Arprt Elev 213
---------------------------	-------------------------	--

AL-511 [USN] YUMA MCAS/YUMA INTL (KNYL)

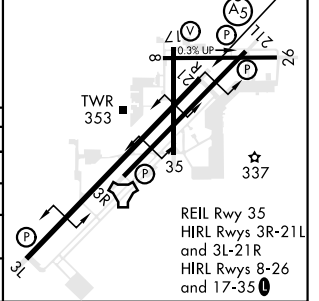
* When ALS inop, increase CAT ABCD vis to 3/8 mile.
 ** When ALS inop, increase CAT AB vis to 1 mile, CAT CD vis to 1 1/8 miles.

MALSR  MISSED APPROACH: Climb to 900, then climbing right turn to 3600 direct BZA VORTAC and BZA R-337 to CAZZI and hold.

ATIS ★ 118.8 273.5	ASOS 256.4	YUMA APP CON 124.7 371.975	YUMA TOWER ★ 119.3 (CTAF) 0 377.075	GND CON 121.9 314.0	CLNC DEL 118.0 336.4	ASR/ PAR
------------------------------	----------------------	--------------------------------------	---	-------------------------------	--------------------------------	----------



ELEV 213	TDZE 21L 208
3L-21R 13,300 x 200	TDZE 21R 193
3R-21L 9239 x 150	213° 5.7 NM from FAF
8-26 6146 x 150	
17-35 5710 x 150	



CATEGORY	A	B	C	D
S-ILS 21R *	393-1/2	200	(200-1/2)	
S-LOC 21R **	600-1/2 407 (400-1/2)		600-3/4 407 (400-3/4)	
SIDESTEP 21L ***	600-1 392 (400-1)		600-1 1/8 392 (400-1 1/8)	
CIRCLING	680-1 467 (500-1)	700-1 487 (500-1)	800-1 1/2 587 (600-1 1/2)	800-2 587 (600-2)

YUMA, ARIZONA
Amdt 5 24MAY18

32° 39' N - 114° 36' W

YUMA MCAS/YUMA INTL (KNYL)

ILS or LOC/DME RWY 21R

SW-4, 25 FEB 2021 to 25 MAR 2021

SW-4, 25 FEB 2021 to 25 MAR 2021