

MOHAK FOUR DEPARTURE (MOHAK4•MOHAK)

YUMA, ARIZONA

ATIS ★
 118.8 273.5
 CLNC DEL
 118.0 336.4
 GND CON
 121.9 314.0
 YUMA TOWER ★
 119.3 377.075
 YUMA DEP CON
 125.55 282.325
 ASOS
 256.4

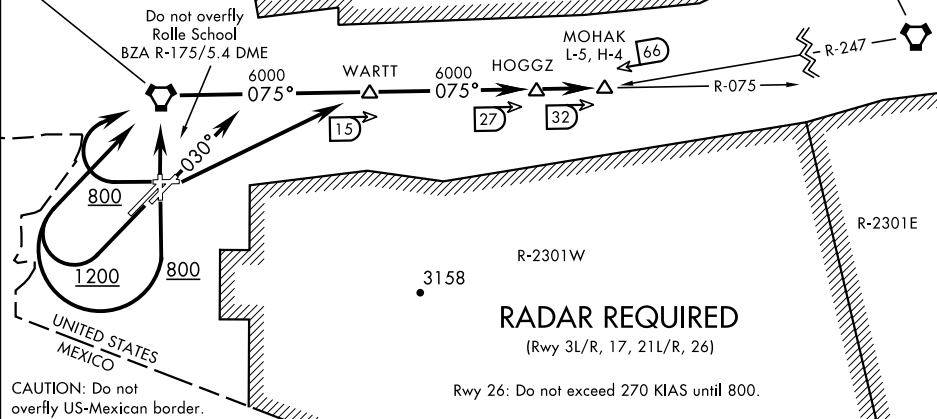
R-2306
 R-2307
 R-2308
 R-2309

CAUTION: Tethered Balloon
 ▲ up to 15,000

BARD
 116.8 BZA
 Chan 115

GILA BEND
 116.6 GBN
 Chan 113

SW-4, 25 FEB 2021 to 25 MAR 2021



SW-4, 25 FEB 2021 to 25 MAR 2021

DEPARTURE ROUTE DESCRIPTION

TAKE-OFF RWY 3L/R: Climb hdg 030°, then RADAR vectors to intercept BZA VORTAC R-075. Thence...

TAKE-OFF RWY 8: Climbing left turn direct WARTT. Thence...

TAKE-OFF RWY 17: Climb to 800, then climbing right turn direct BZA VORTAC. Thence...

TAKE-OFF RWY 21L/R: Climb to 1200, then climbing right turn direct BZA VORTAC. Thence...

TAKE-OFF RWY 26: Climb to 800, then climbing right turn direct BZA VORTAC. Do not exceed 270 KIAS until 800.

TAKE-OFF RWY 35: Climb direct BZA VORTAC. Thence....

...via BZA R-075 to MOHAK INT via HOGGZ INT. Then via assigned route. Maintain assigned altitude. Expect clearance to filed altitude/flight level 10 minutes after departure.

MOHAK FOUR DEPARTURE (MOHAK4•MOHAK)

YUMA, ARIZONA

Orig 26MAR20

YUMA MCAS/YUMA INTL (KNYL)