

18144

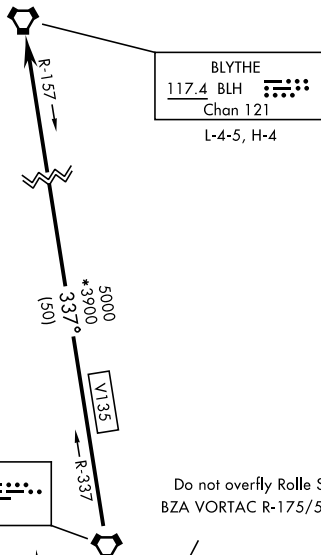
SHL-511 [USN]

YUMA MCAS/YUMA INTL (KNYL)

PICACHO FOUR DEPARTURE (PICA4 • BLH)

YUMA, ARIZONA

ATIS ★
 118.8 273.5
 CLNC DEL
 118.0 336.4
 GND CON
 121.9 314.0
 YUMA TOWER ★
 119.3 377.075
 YUMA DEP CON
 125.55 282.325
 ASOS
 256.4



2217

Rwy 8: Do not exceed 300 KIAS until 1200.
 Rwy 26: Do not exceed 250 KIAS until 800.

BARD
 116.8 BZA
 Chan 115
 L-5, H-4

Do not overfly Rolle School
 BZA VORTAC R-175/5.4 DME

UNITED STATES
 MEXICO

CAUTION: Do not overfly
 US-Mexican border.

RADAR REQUIRED

R-2301 W

DEPARTURE ROUTE DESCRIPTION

TAKE-OFF RWY 3L/R: Climb on hdg 030°, then radar vectors to intercept BZA VORTAC R-337. Thence...

TAKE-OFF RWY 8: Climb to 1200, then climbing left turn direct BZA VORTAC. Do not exceed 300 KIAS until 1200. Thence...

TAKE-OFF RWY 17: Climb to 800, then climbing right turn hdg 340° to intercept BZA VORTAC R-337. Thence...

TAKE-OFF RWY 21L/R: Climb to 1200, then climbing right turn hdg 350° to intercept BZA VORTAC R-337. Thence...

TAKE-OFF RWY 26: Climb to 800, then climbing right turn direct BZA VORTAC. Do not exceed 250 KIAS until 800. Thence...

TAKE-OFF RWY 35: Climb direct BZA VORTAC, thence...

...via BZA R-337 and BLH VORTAC R-157 to BLH, then via assigned route. Maintain assigned altitude. Expect clearance to filed altitude/flight level 10 minutes after departure.

PICACHO FOUR DEPARTURE (PICA4 • BLH)

YUMA, ARIZONA

Orig 24MAY18

YUMA MCAS/YUMA INTL (KNYL)

SW-4, 25 FEB 2021 to 25 MAR 2021

SW-4, 25 FEB 2021 to 25 MAR 2021