

YUMA, ARIZONA

RNAV (GPS) RWY 17

19171

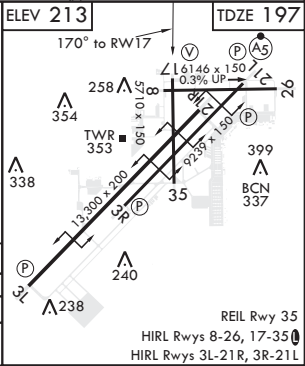
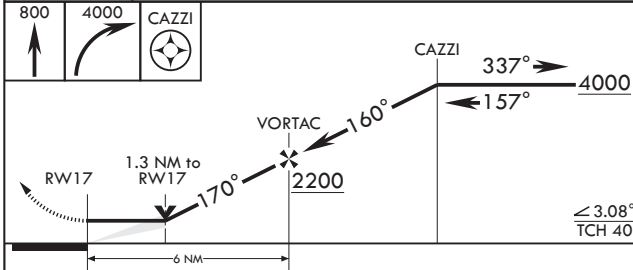
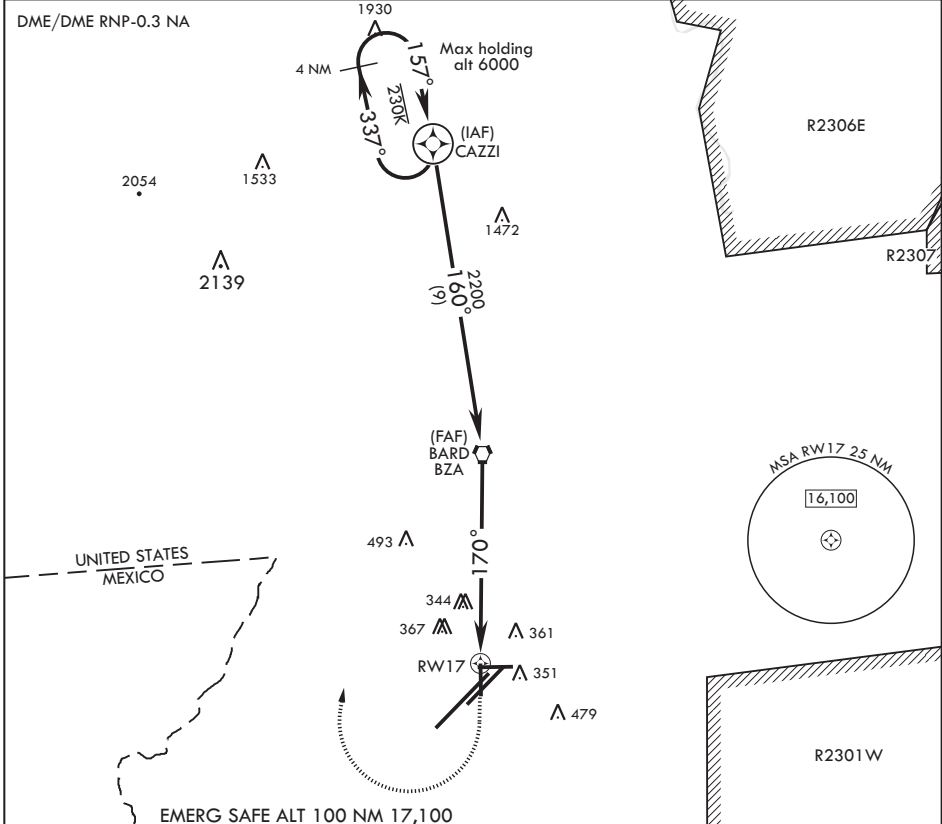
APCH CRS 170°	Rwy Idg 5710	TDZE 197	Arprt Elev 213
------------------	-----------------	-------------	-------------------

AL-511 (USN)

YUMA MCAS YUMA INTL (KNYL)

MISSED APPROACH: Climb to 800 then, climbing right turn to 4000 direct CAZZI and hold. Continue climb in hold to 4000.

ATIS★ 118.8 273.5	ASOS 256.4	APP CON 124.7 371.975	TOWER★ 119.3 (CTAF) 377.075	GND CON 121.9 314.0	CLNC DEL 118.0 336.4	ASR/PAR
----------------------	---------------	--------------------------	--------------------------------	------------------------	-------------------------	---------



CATEGORY	A	B	C	D
LNVA MDA	640-1 443 (500-1)	640-1 3/8 443 (500-1 3/8)		
◻ CIRCLING	680-1 467 (500-1)	700-1 487 (500-1)	800-1 1/2 587 (600-1 1/2)	800-2 587 (600-2)

YUMA, ARIZONA
Amdt 4 20JUN19

32°39'N - 114°36'W

YUMA MCAS YUMA INTL (KNYL)

RNAV (GPS) RWY 17

SW-4, 25 FEB 2021 to 25 MAR 2021

SW-4, 25 FEB 2021 to 25 MAR 2021

REIL Rwy 35
HIRL Rwys 8-26, 17-35
HIRL Rwys 3L-21R, 3R-21L