

RNAV (GPS) RWY 3L

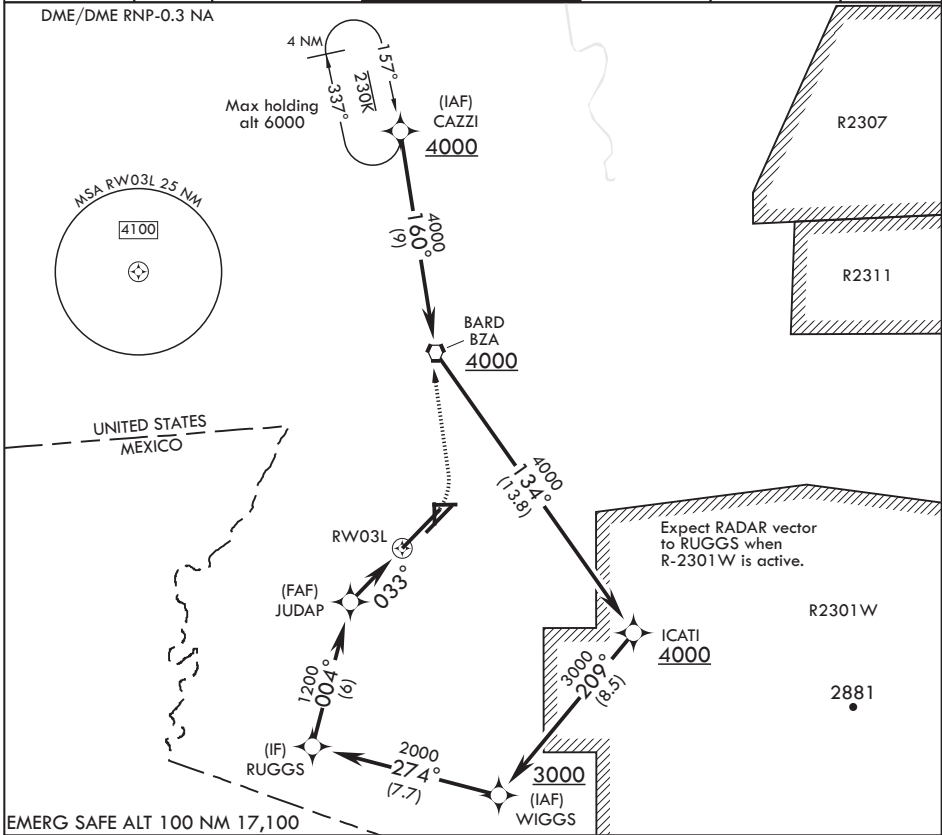
APCH CRS 033°	Rwy Idg TDZE Arprt Elev	13,300 195 213
------------------	-------------------------------	----------------------

AL-511 (USN)

YUMA MCAS YUMA INTL (KNYL)

MISSED APPROACH: Climb to 1000, then climbing left turn to 4000 direct CAZZI and hold. Continue climb in hold to 4000.

ATIS★ 118.8 273.5	ASOS 256.4	APP CON 124.7 371.975	TOWER★ 119.3 (CTAF) 377.075	GND CON 121.9 314.0	CLNC DEL 118.0 336.4	ASR/PAR
----------------------	---------------	--------------------------	--------------------------------	------------------------	-------------------------	---------



RUGGS		1000		4000		CAZZI		ELEV 213	TDZE 195
2000		004°		JUDAP		1200		033°	
3.00° ≥ TCH 54		1 NM to RW03L		RW03L		3 NM		354A	
CATEGORY	A	B	C	D					
LNAV MDA	560-1		365		(400-1)				
CIRCLING	680-1 467 (500-1)	700-1 487 (500-1)	800-1 1/2 587 (600-1 1/2)	800-2 587 (600-2)		283 0.3% UP 258 57.10 x 150 354A TWR 353 338 A 399 A BCN 337 240 238 033° to RW03L 13500 x 200 6146 x 150 9235 x 150 35 35 26 26 RAIL Rwy 21R REIL Rwy 35 HIRL Rwys 8-26, 17-35 HIRL Rwys 3L-21R, 3R-21L			

RNAV (GPS) RWY 3L

SW-4, 25 FEB 2021 to 25 MAR 2021

SW-4, 25 FEB 2021 to 25 MAR 2021